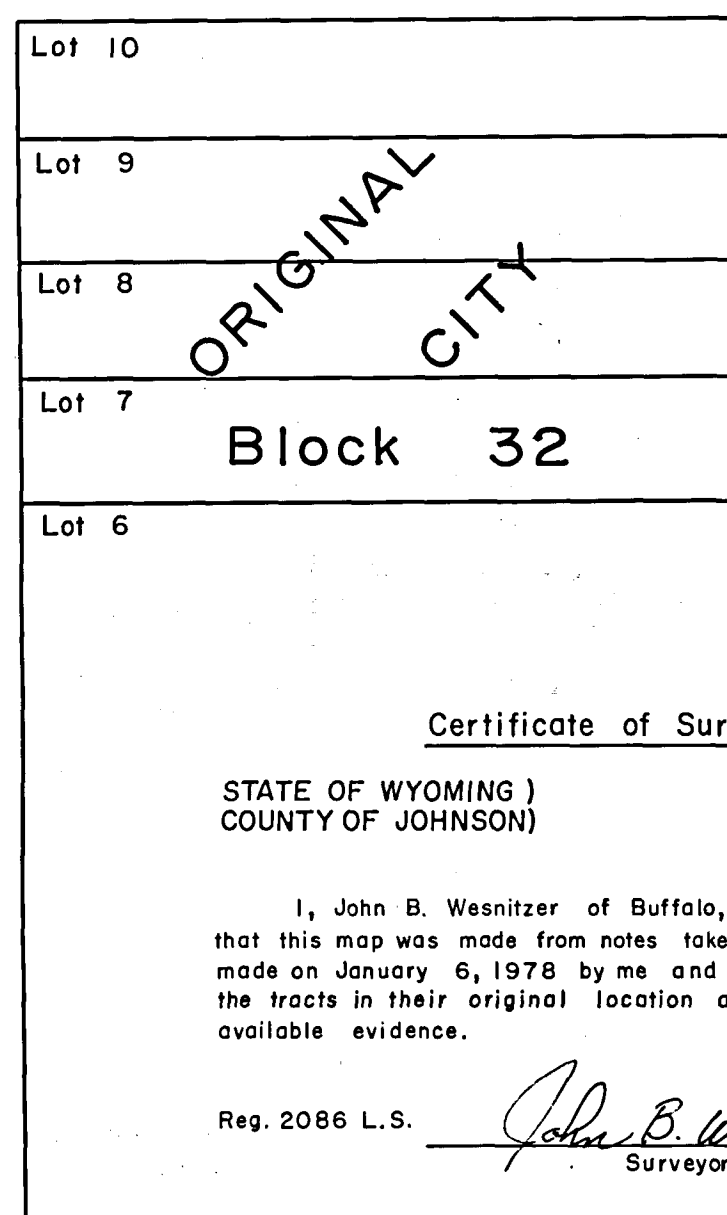


HENRY STREET

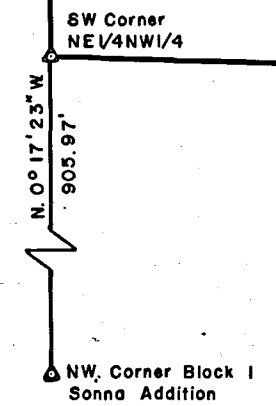


Certificate of Surveyor

STATE OF WYOMING)
COUNTY OF JOHNSON)

I, John B. Wesnitzer of Buffalo, Wyoming, hereby certify that this map was made from notes taken during an actual survey made on January 6, 1978 by me and that it accurately delineates the tracts in their original location according to the best available evidence.

Reg. 2086 L.S. *John B. Wesnitzer*
Surveyor



- LEGEND**
- ▲ Found Corner
 - Set 5/8"x30" Rebar w/Surv Cap
 - Computed Corner

Scale
1" = 40'



STATE OF WYOMING) ss 20891
COUNTY OF JOHNSON)

This instrument was filed for record on this 9 day of March, 1978, at 1:54 P.M. and was duly recorded in Book 2, page 24 of 5 *RLC*
By *John B. Wesnitzer* Register of Deeds
By _____ Deputy

DEPENDENT RETRACEMENT
of the
BUCKINGHAM 1st & 2nd
ADDITIONS
to the city
of
Buffalo, Wyoming

PREPARED BY:
R.G. STUCKERT & ASSOCIATES, INC.
JANUARY 1978

