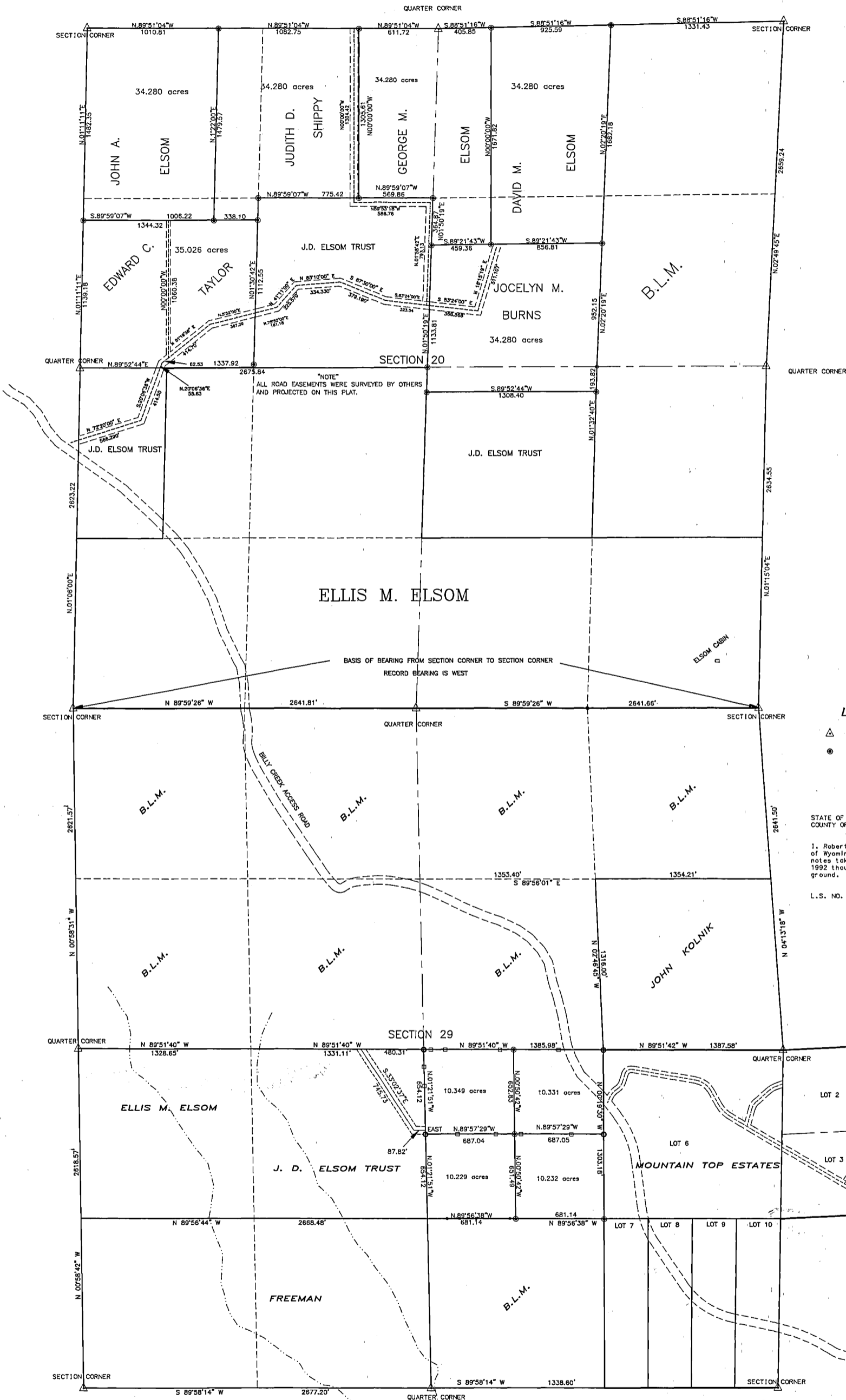


CERTIFICATE OF SURVEY ELSOM MOUNTAIN LANDS IN SECTION'S 20 AND 29, T.48 N., R.83 W.



LEGEND

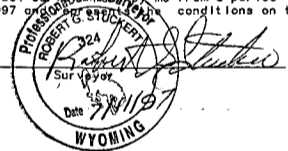
- ▲ B.L.M. BRASS CAPS
- SET 5/8" REBAR W/CAPS

CERTIFICATE OF SURVEYOR

STATE OF WYOMING) ss
COUNTY OF JOHNSON)

I, Robert G. Stuckert a duly licensed land surveyor in the State of Wyoming do hereby certify that this map was made by me from notes taken during an actual survey of the lands here shown from a period of 1992 through June 25th 1997 and that the same are in accordance with the conditions on the ground.

L.S. NO. 324



SHEET 1 OF 1

CERTIFICATE OF SURVEY
ELSOMS MOUNTAIN LANDS
IN SECTION 20
AND SECTION 29
T.48 N., R.83 W.

STATE OF WYOMING) ss
COUNTY OF JOHNSON) U30400

I hereby certify that the above plat was filed for record on the 11th day of July 1997 at 12:00 P.M. and was duly recorded in Book # 2 Page 152 FEE \$ 50.00

Jane Carr, deputy

RGS ENGINEERING & SURVEYING
R.G. Stuckert & Associates
415 Conrad
Buffalo, Wyoming 82834