

CARWILE'S ADDITION as originally laid out by N. G. CARWILE on August 4, 1884, Beginning at a point whence the Northwest corner of Lot 4, Section 35, T51N R82W bears N1°06'W 134.5 feet, thence S1°06'W 554.5 feet, thence S89°50'E 1279.4 feet, thence S0°10'W 636.2 feet, thence S89°50'E 134.9 feet, thence N0°10'E 1325.2 feet, thence N89°50'W 1968 feet, thence N15°08'W 30 feet, thence S75°46'W 663.8 feet to the point of beginning.

CARWILE'S ADDITION as revised by this plat—Beginning at a point whence the Northwest corner of Lot 4, Section 35, T51N R82W bears N1°06'W 134.5 feet, thence S1°06'W 554.5 feet, thence S89°50'E 1279.4 feet, thence S0°10'W 636.2 feet, thence S89°50'E 770.8 feet, thence N40°09'30"E 897.3 feet, thence N0°10'E 639 feet, thence N89°50'W 1968 feet, thence N15°08'W 30 feet, thence S75°46'W 663.8 feet to the point of beginning.

STATE OF WYOMING }
COUNTY OF JOHNSON } ss.

We, O. W. Lusher, Mayor and Carl Kaltenbach, Clerk of the Town of the CITY OF BUFFALO, Wyoming, hereby certify that this Plat is in accordance with provisions as set forth in the official records of the CITY OF BUFFALO, namely: vacation of a four (4) foot portion of Gatchell Street, vacation of twenty (20) and forty four (44) foot portions of Brock Street, vacating from the corporate limits of the CITY OF BUFFALO that portion of CARWILE'S ADDITION south and east of the west R. O. W. Line of State Highway No. 87 Marginal Route, also a portion of Brock Street, as advertised January 1961, described as being ten (10) feet wide and one hundred fifty (150) feet long lying parallel to and twenty (20) feet north of Lot 6, Block 8, of the CARWILE'S ADDITION.

Attest: Carl Kaltenbach
City Clerk

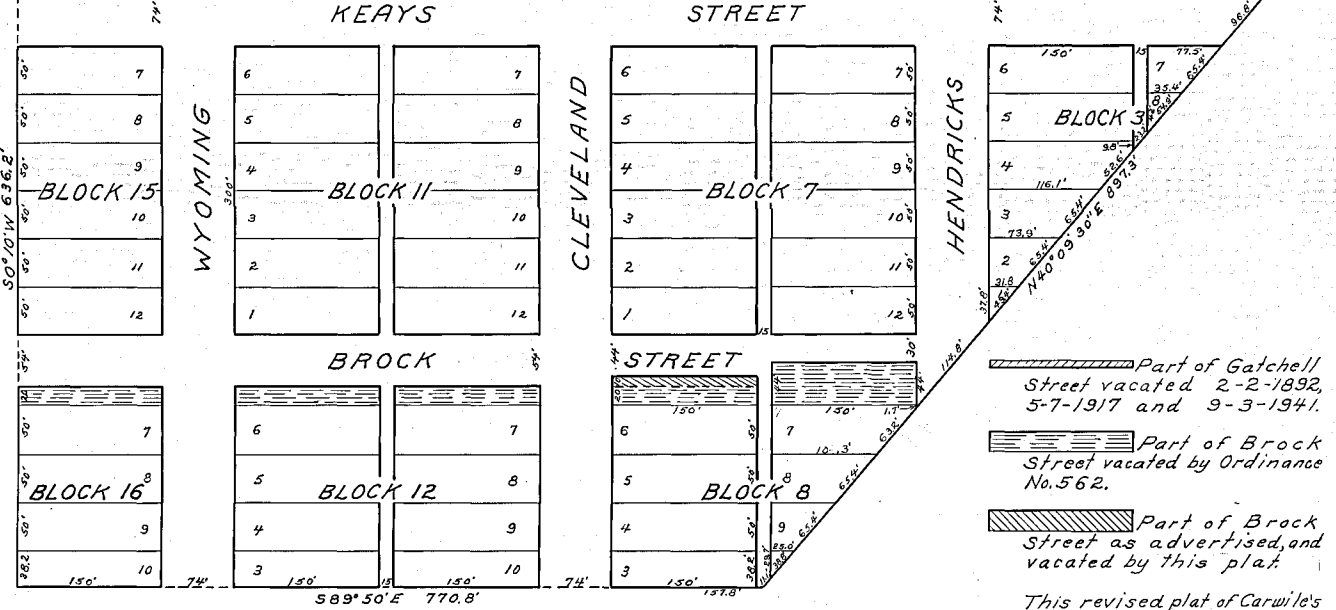
O. W. Lusher
Mayor

STATE OF WYOMING }
COUNTY OF JOHNSON } ss.

On this 1st day of February, 1961 before me appeared O. W. Lusher and Carl Kaltenbach, to me personally known, who being by me duly sworn did say that they are respectively the Mayor and City Clerk of the Town of the CITY OF BUFFALO, Wyoming, and that the seal affixed hereto is the official seal of said CITY OF BUFFALO and that this plat was signed in behalf of said CITY OF BUFFALO by order of the Town Council of said CITY OF BUFFALO.

My commission expires January 21, 1964.

Robert A. Viles
Notary Public



Part of Gatchell Street vacated 2-2-1892, 5-7-1917 and 9-3-1941.
 Part of Brock Street vacated by Ordinance No. 562.
 Part of Brock Street as advertised, and vacated by this plat.

This revised plat of Carwile's Addition approved by Ordinance 589, dated February 1st 1961.

STATE OF WYOMING }
COUNTY OF JOHNSON } ss.

I, Lee D. Moffett, of Buffalo, Wyoming, hereby certify that this plat was made from official records of the Wyoming Highway Department and the Town of the City of Buffalo on file in the Office of the Johnson County Clerk, and that it correctly represents the CARWILE'S ADDITION as described.

Wyo. Reg. No. 229

APPROVED:
Board of County Commissioners
of Johnson County, Wyoming.

Lee D. Moffett
County Clerk

REVISED PLAT OF
CARWILE'S ADDITION

CITY OF BUFFALO
Scale 1"=100'
JANUARY 1961