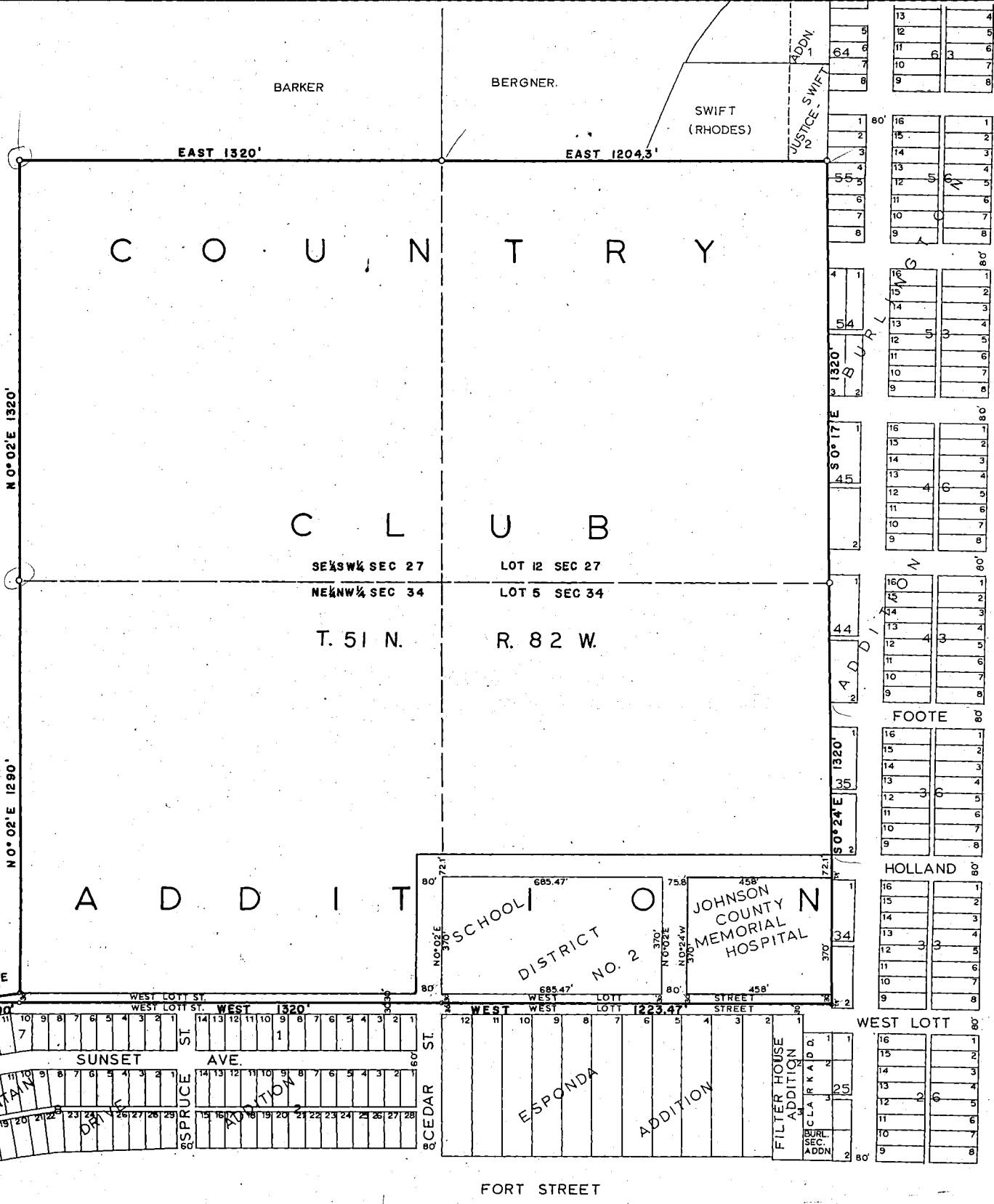


CERTIFICATE OF ENGINEER
STATE OF WYOMING
COUNTY OF JOHNSON

I, C. J. Sanders of Buffalo, Wyoming hereby certify this map was made from maps and records on file in the Office of the Johnson County Clerk and that it correctly represents the conditions as given in said records.
January 1969
P.E. & L.S. 671
C. J. Sanders
Engineer



OWNER'S CERTIFICATE & DEDICATION
STATE OF WYOMING
COUNTY OF JOHNSON

I, Ray A. Braten, Chairman, School District No. 2 of Johnson County, Wyoming, do hereby certify that School District No. 2 is the owner of the lands shown as School District No. 2 lands and it is with the full consent and accordance of the Board of School District No. 2 that the streets shown shall be dedicated to the public use.
Witness my hand this 14 day of January 1969.

Subscribed and sworn to before me this 14 day of January 1969.
My commission expires March 11, 1972
Ray A. Braten
Notary Public

I, Sam Rosenthal, Mayor of the City of Buffalo, Wyoming do hereby certify that the City of Buffalo is the owner of the lands on this map not owned by School District No. 2 or Johnson County and that it is with the full consent and accordance of the Board of County Commissioners that the streets shown shall be dedicated to the public use.
Witness my hand this 23 day of January 1969.

Subscribed and sworn to before me this 23 day of January 1969.
My commission expires January 11, 1971
Sam Rosenthal
Notary Public
County Clerk

I, Sam Rosenthal, Mayor of the City of Buffalo, Wyoming do hereby certify that the City of Buffalo is the owner of the lands on this map not owned by School District No. 2 or Johnson County and that it is with the full consent and accordance of the City Council that the streets shown shall be dedicated to the public use. The Country Club Addition consists of and is described as: Beginning at the southeast corner of Lot 5, Section 34, T. 51 N., R. 82 W.

Thence West 2743.47 feet
Thence N81°28'E 202.2 feet
Thence N 0°02'E 2610 feet
Thence East 2524.3 feet
Thence S 0°17'E 1320 feet
Thence S 0°24'W 1320 feet to the point of beginning.
Being Lot 5, NE 1/4 NW 1/4, and part of NW 1/4 NW 1/4 Section 34; and Lot 12, SE 1/4 SW 1/4 Section 27; all in Township 51 North, Range 82 West, 6th R.M. Wyoming.

Attest: *Sam Rosenthal* Mayor
Carl Kestelmeier City Clerk

CERTIFICATE

We hereby certify that the Country Club Addition has been annexed by Ordinance No. 648 duly passed and approved by the City Council this 27 day of February 1969.

Attest: *Carl Kestelmeier* Mayor
Carl Kestelmeier City Clerk

Approved by the Board of County Commissioners of Johnson County, Wyoming by Resolution duly passed on this 23 day of January 1969.

Attest: *Will B. Cline* Chairman
Will B. Cline County Clerk

STATE OF WYOMING
COUNTY OF JOHNSON
I, *Will B. Cline*
Notary Public
My commission expires *January 11, 1971*

COUNTRY CLUB
ADDITION
TO
THE CITY OF BUFFALO, WYOMING