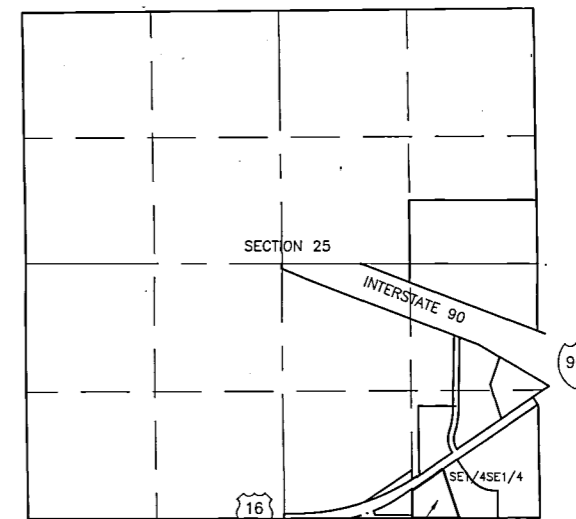


R.82 W., T.51 N.



SOUTHEAST CORNER OF SECT. 25 T.51 N., R.82 W. B.L.M. BRASS CAP

COWBOY TOWN RE-SUBDIVISION LOCATION MAP SCALE: 1" = 1000'

CERTIFICATE OF DEDICATION

The above or foregoing subdivision of a tract of land and described as follows:

Beginning at a point on the south line of Section 25, T.51 N., R.82 W., 6th P.M. Wyoming bearing S.89°49'14" W., a distance of 842.18 feet from the southeast corner of said Section 25; Thence S.89°49'14" W., along said south line a distance of 489.52 feet to the southwest corner of the SE 1/4 SE 1/4 of said Section 25; Thence N.0°39'08" W. along the west line of the SE 1/4 SE 1/4 a distance of 285.15 feet to a point on the south right-of-way line of U.S. 16; Thence N.55°34'33" E. along said south right-of-way line a distance of 396.57 feet; Thence S.18°03'57" E. a distance of 534.10 feet to the point of beginning; as appears on this plat, is with the free consent, and in accordance with the desires of the undersigned owners and proprietors; containing 3.935 acres more or less; have by these presents laid out, and surveyed as COWBOY TOWN RE-SUBDIVISION, and do hereby dedicate and convey to and for public use forever hereafter the streets as are laid out and designated on this plat, and do also reserve perpetual easements for the installation and maintenance of utilities and for irrigation and drainage facilities as are laid out and designated on this plat; the dedication of streets or roads on this plat in no way obligates the Johnson County Commissioners to maintain such roads or except them as county roads nor does it relieve the subdivider of the obligation to construct such streets and roads according to the Johnson County Road Standards.

Witness our hands and seals this 14th day of October, A.D. 1995,

COWBOY TOWN SADDLERY INC. D. R. Simmons, PRESIDENT Jeannie Simmons, VICE-PRESIDENT

State of Wyoming) County of Johnson) The foregoing instrument was acknowledged before me by D. R. Simmons and Jeannie Simmons, this 14th day of October, 1995.

Witness my hand and official seal. My Commission expires 5-10-97. Notary Public



APPROVAL BY THE BOARD OF COUNTY COMMISSIONERS

Approved by the Johnson County Board of County Commissioners this 7th day of Nov A.D. 1995.

Attest: County Clerk, Chairman

APPROVAL BY THE PLANNING COMMISSION

Approved by the Johnson County Planning Commission this 28th day of Sept A.D. 1995.

Attest: Clerk of the commission, Chairman of the Planning Commission

APPROVAL BY THE CITY OF BUFFALO, WYOMING

Approved by the city council of Buffalo, Wyoming dated this 3rd day of October 1995.

Attest: City Clerk



SCALE: 1" = 30'

CERTIFICATE OF SURVEYOR

COUNTY OF JOHNSON) STATE OF WYOMING) ss I, Robert G. Stuckert, a duly registered land surveyor in the State of Wyoming, do hereby certify that this plat of COWBOY TOWN RE-SUBDIVISION truly and correctly represents the results of a survey made by me or my direct supervision.

Reg. No. 324 L.S. [Signature] Date 9/28/95 WYOMING

- SET 30' 5/8" REBAR W/ 1-1/2" CAPS SET 30' 5/8" REBAR W/ 2" CAPS

TOTAL AREA = 3.935 ACRES NO. OF LOTS = 2

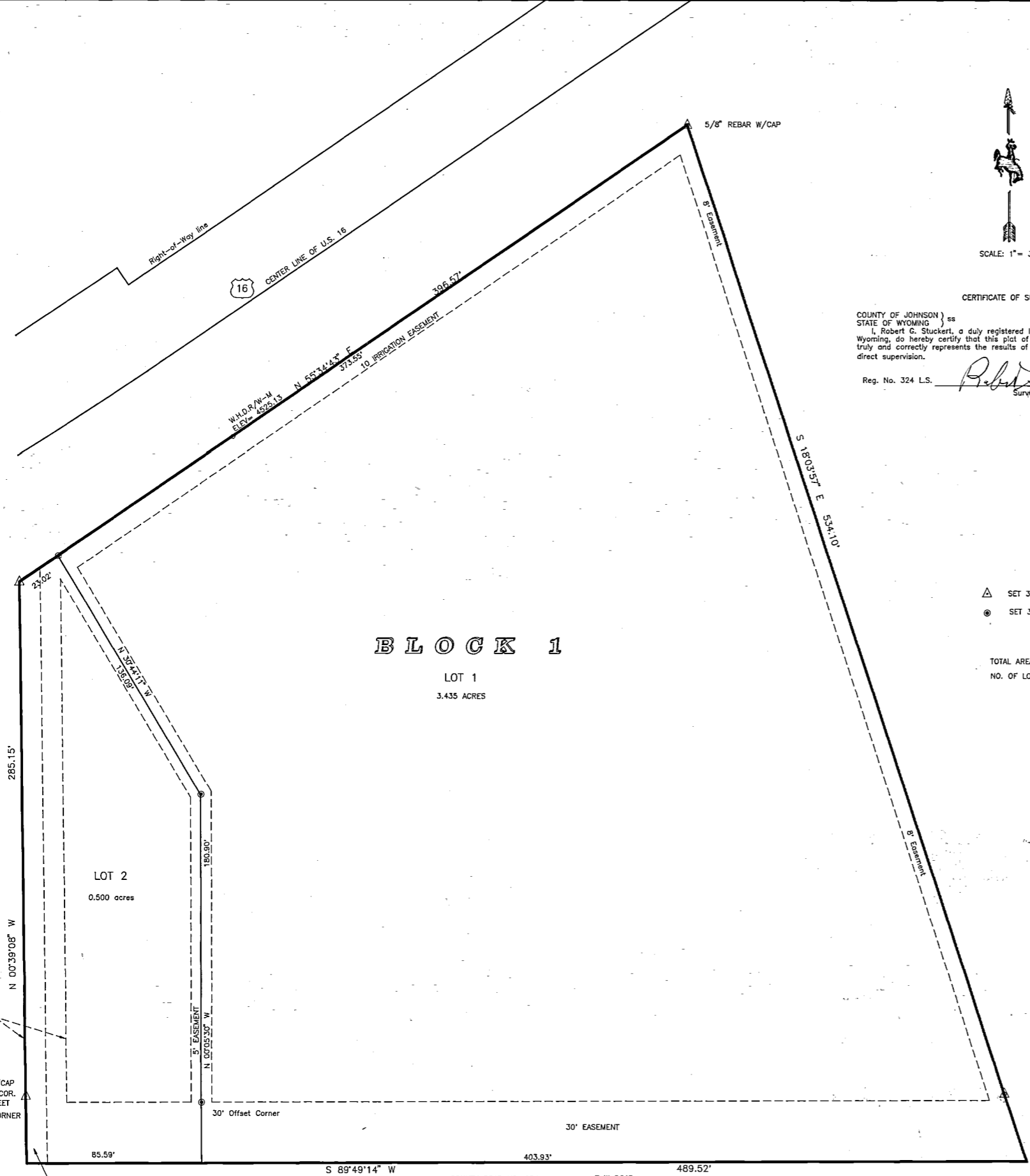
OFFSET PROP. COR. 5/8" REBAR W/CAP 34.73 FEET FROM COR.

N.89°49'14"E. 842.18' TO SECTION COR.

038834

CERTIFICATE OF RECORDER

I hereby certify that the above plat was filed for record on the 9th day of November 1995 at 1:40 P.M. and was duly recorded in Book 2 Page 135 FEE \$50.00 Protective Covenants are recorded in Book 26444 Page 309



WATER RIGHTS TO GO WITH THE LAND NO PUBLIC SEWAGE DISPOSAL SYSTEM NO PUBLIC MAINTENANCE OF STREETS OR ROADS WATER SUPPLY BY THE CITY OF BUFFALO

The water rights covering this land is under the Splasher Ditch with a Territorial permit, Priority of 5--1880

PLAT OF COWBOY TOWN RE-SUBDIVISION JOHNSON COUNTY, WYOMING 9/28/1995