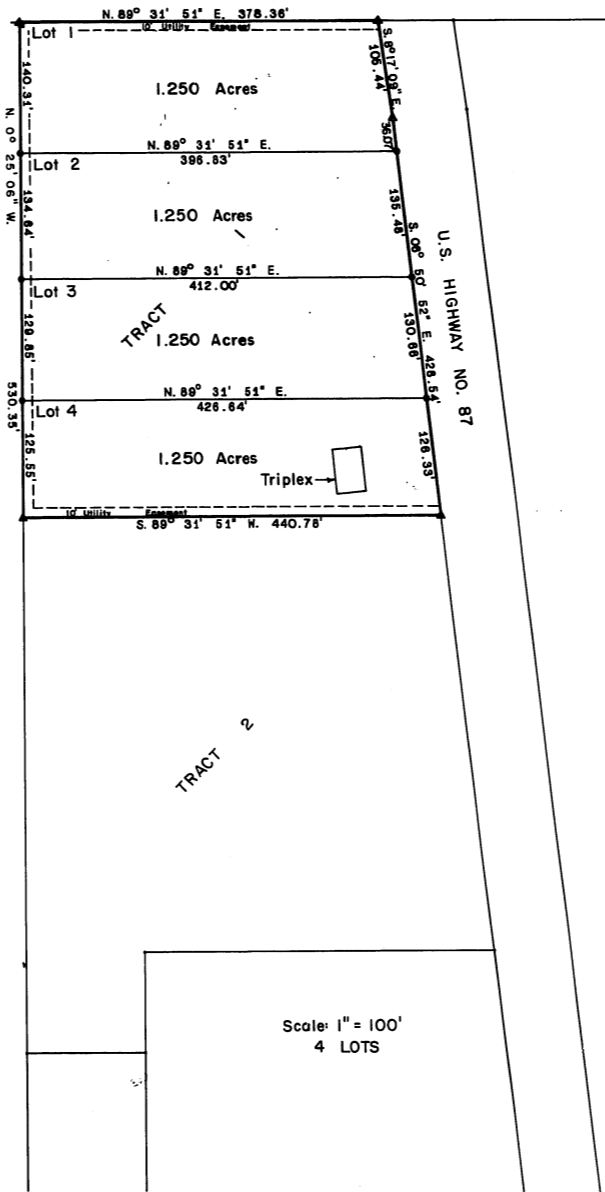


Vicinity Map
Scale: 1" = 400'

CERTIFICATE OF SURVEYOR
STATE OF WYOMING)
COUNTY OF JOHNSON)
I, John B. Wessitzer a duly registered land surveyor in the State of Wyoming, do hereby certify that this plat of the DUBE LOTS truly and correctly represents the results of a survey made by me or under my direct supervision.
Reg. 2086 L.S. John B. Wessitzer
Surveyor

STATE OF WYOMING)
COUNTY OF JOHNSON)
This instrument was filed for record on Sept. 2, 1981 at 10:24 A.M. and was duly recorded in Book 2, page 54. Fee: \$20.00
Robert G. Stuckert Register of Deeds
By _____ Deputy



LEGEND
▲ Found Corner
○ Set 5/8" x 30" Rebar w/Survcap

DUBE LOTS
The above or foregoing subdivision of the following described land or real estate, to wit:
This is a subdivision of Tract 1 of the Glenn Acres Subdivision, Section 14, T.50N., R.82W. 6th P.M. Wyoming containing 5,000 acres all lying in said Tract 1, Glenn Acres Subdivision, as appears on this plat, is with free consent, and in accordance with the desires of the undersigned owners and proprietors have by these presents laid out, surveyed as DUBE LOTS, and do hereby reserve perpetual easements for the installation and maintenance of utilities and for irrigation and drainage facilities as are laid out and designated on this plat, witness our hands and seals this 12th day of June, 1981.
Ronald R. Dube Carol A. Dube
Ronald R. Dube Carol A. Dube
Gary R. Marshall
Gary R. Marshall

STATE OF WYOMING)
COUNTY OF JOHNSON)
The foregoing instrument was acknowledged before me by: Ronald R. Dube, Carol A. Dube, and Gary R. Marshall, this 12th day of June, 1981.
Witness my hand and official.
Robert G. Stuckert
Notary Public

APPROVAL BY THE COUNTY
Approved by the Johnson County Planning Commission this 10th day of June, 1981.
William R. Patten
Chairman of the Planning Commission
Attest: William R. Patten
Clerk of the Planning Commission
Approved by the Johnson County Board of County Commissioners this 10th day of June, 1981.
William J. Stuckert
Chairman of Board
Attest: William R. Patten
County Clerk

NO PROPOSED DOMESTIC WATER SOURCE
NO PROPOSED PUBLIC SEWAGE DISPOSAL SYSTEM

NOTE: No further subdivision of the DUBE LOTS without the approval of the Johnson County Planning Commission.

Plat
Of The
DUBE LOTS
In
Glenn Acres Subdivision
Johnson County
Wyoming

PREPARED BY:
R.G. STUCKERT & ASSOCIATES, INC.
JUNE 1981