

ENGINEER'S CERTIFICATE

STATE OF WYOMING }
 COUNTY OF JOHNSON }
 I, Clifford J. Sanders, of Buffalo, Wyoming hereby certify that this map was made from notes taken in the field during an actual survey made by Lee D. Moffatt, Reg. # 229, under my supervision and it correctly represents the area.
 Dated this August 8, 1966
 Registration # 517
 Clifford J. Sanders
 Engineer

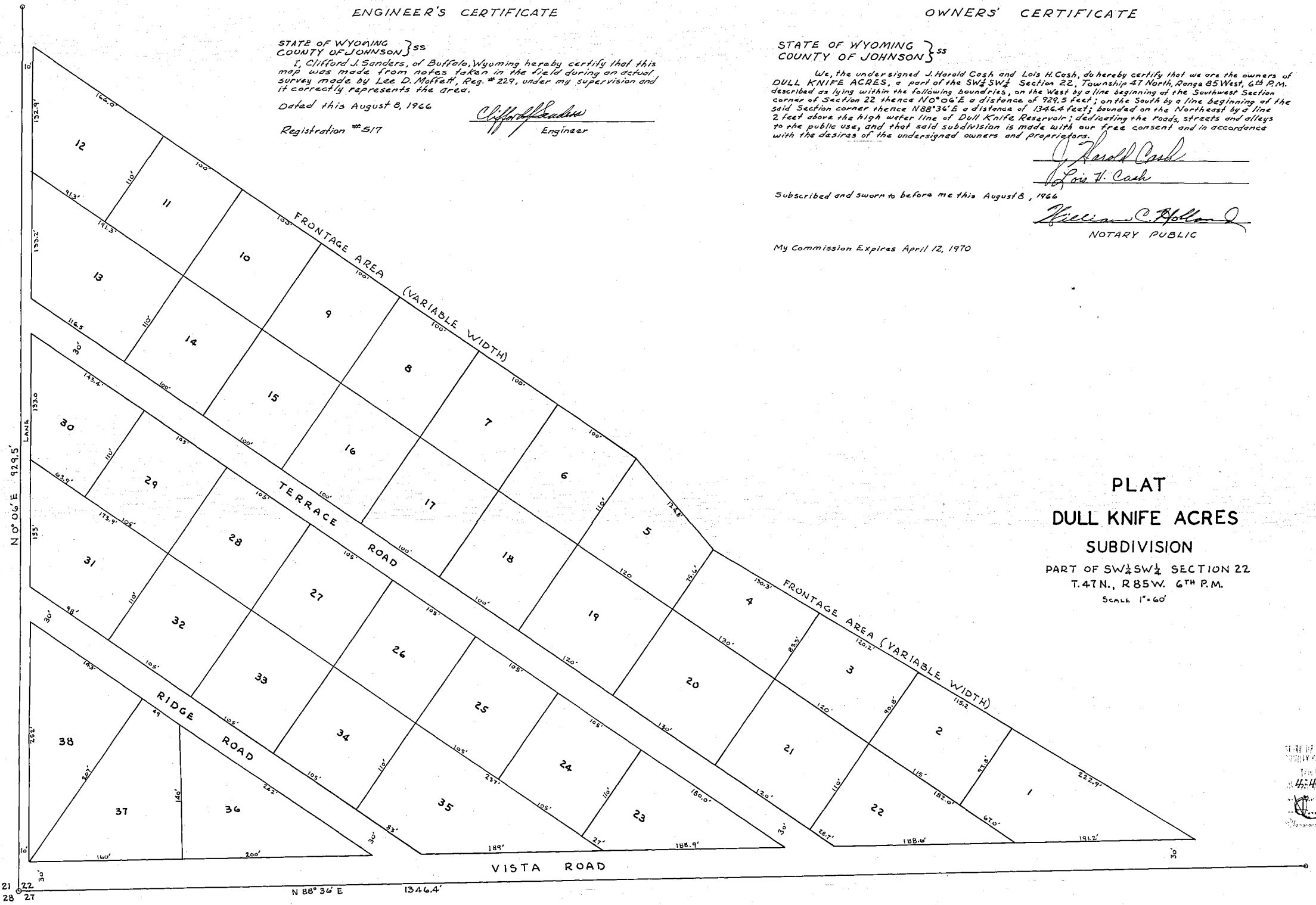
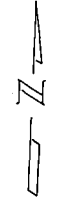
OWNERS' CERTIFICATE

STATE OF WYOMING }
 COUNTY OF JOHNSON }
 We, the undersigned J. Harold Cash and Lois H. Cash, do hereby certify that we are the owners of DULL KNIFE ACRES, a part of the SW 1/4 SW 1/4 Section 22, Township 47 North, Range 85 West, 6th P.M. described as lying within the following boundaries, on the West by a line beginning at the Southwest corner of Section 22 thence N 0° 06' E a distance of 929.5 feet; on the South by a line beginning at the said Section corner thence N 88° 36' E a distance of 1346.4 feet; bounded on the Northeast by a line 2 feet above the high water line of Dull Knife Reservoir; dedicating the roads, streets and alleys to the public use, and that said subdivision is made with our free consent and in accordance with the desires of the undersigned owners and proprietors.

J. Harold Cash
 Lois H. Cash
 William C. Hollan
 NOTARY PUBLIC

Subscribed and sworn to before me this August 8, 1966

My Commission Expires April 12, 1970



PLAT
 DULL KNIFE ACRES
 SUBDIVISION
 PART OF SW 1/4 SW 1/4 SECTION 22
 T. 47 N., R. 85 W. 6TH P.M.
 SCALE 1" = 60'

22012

STATE OF WYOMING }
 COUNTY OF JOHNSON }
 This plat was filed for record on 8-15-66 at 4:40 P.M. and was duly recorded in Book 117 Page 100
 J. O. Johnson
 Register