

SECTION 12,
TOWNSHIP 50 NORTH, RANGE 84 WEST, 6TH P.M.
JOHNSON COUNTY, WYOMING

SECTION CORNER OF 1, 2, 11 & 12
RECOVERED A 1966 BLM BRASS CAP IN A LARGE MOUND OF STONE.

USBLM
211
11|12
1966
N. 1723603.02
E. 1420396.77
EL. 7487.61
Δα 017°18.9'
C.F. 0.999592827

FROM RECOVERED CORNER:
A 14" PINE, BEARS S.82°E., 57.2 FEET, MKD. S1 T50N R84W BT (NEW)
A 16" PINE, BEARS S.36°W., 73.1 FEET, MKD. S11 T50N R84W BT (NEW)
A CHISELED "X" IN ROCK BEARS, N.20°W., 18.8 FEET
A CHISELED "X" IN ROCK BEARS, S.10°E., 9.5 FEET

W1/16 CORNER COMMON TO SECTIONS 1 & 12
RECOVERED A 1966 BLM BRASS CAP IN A MOUND OF STONE.

USBLM
S1
W1/16 S12
1966
N. 1723301.78
E. 1421663.62
EL. 7306.64
Δα 017°31.0'
C.F. 0.999601791

FROM REESTABLISHED CORNER:
A CHISELED "X" IN ROCK BEARS, N.53°W., 58.6 FEET
A 5/8" X 24" REBAR W/ALUM. CAP, BEARS S.34°W., 33.0 FEET

N1/4 CORNER SECTION 12
RECOVERED A 1966 BLM BRASS CAP IN A MOUND OF STONE.

USBLM
1
1/4 12
1966
N. 1722999.85
E. 1422832.87
EL. 7545.63
Δα 017°43.2'
C.F. 0.999590687

FROM RECOVERED CORNER:
A PINE, BEARS N.11°E., 13.1 FEET (RESURVEY)
A 14" PINE, BEARS S.78°W., 23.5 FEET, MKD. N1/4 S12 BT (NEW)
A 1 1/2" IRON PIPE W/REBAR & ALUM CAP INSIDE,
BEARS N.88°E., 34.30 FEET (GRID BEARING)

N1/16 SECTION 12
RECOVERED A 1966 BLM BRASS CAP IN A MOUND OF STONE.

USBLM
N
1/16
12
1966
N. 1721707.97
E. 1422944.23
EL. 7176.60
Δα 017°43.2'
C.F. 0.999608329

FROM RECOVERED CORNER:
A 36" PINE, BEARS N.76°E., 47.9 FEET, MKD. CN1/16 S12 BT (NEW)
A 1 1/2" IRON PIPE W/ REBAR & ALUM CAP INSIDE,
BEARS N.71°58'W., 29.2 FEET (GRID BEARING)

NW1/16 CORNER SECTION 12
RECOVERED A 1966 BLM BRASS CAP LYING FLAT. REESTABLISHED

USBLM
NW 1/16 S12
1966
N. 1722000.41
E. 1421681.88
EL. 7198.32
Δα 017°31.1'
C.F. 0.999607849

FROM REESTABLISHED CORNER:
A 1 1/2" IRON PIPE W/REBAR & ALUM CAP INSIDE, BEARS S.68°48'W., 9.2 FEET
A CHISELED "X" IN ROCK BEARS, N.20°W., 19.8 FEET (COMPASS)

CW1/16 CORNER SECTION 12
RECOVERED A 1966 BLM BRASS CAP ALONGSIDE REHABBED MOUND

USBLM
CW 1/16 S12
1966
N. 1720697.44
E. 1421700.08
EL. 7108.72
Δα 017°31.1'
C.F. 0.999611261

FROM RECOVERED CORNER:
A 1 1/2" IRON PIPE W/ REBAR & ALUM CAP INSIDE,
BEARS S.32°01'W., 12.5 FEET (GRID BEARING)
A 5/8" X 24" REBAR W/ALUM. CAP, BEARS S.48°E., 33.0 FEET, MKD. RM

SW1/16 CORNER OF SECTION 12
RECOVERED A 1966 BLM BRASS.

USBLM
SW1/16 S12
1966
N. 1719389.22
E. 1421709.17
EL. 7140.25
Δα 017°31.1'
C.F. 0.999609756

FROM RECOVERED CORNER:
A 12" PINE, BEARS N.15°E., 45.2' FEET, MKD. SW1/16 S12 BT (RESURVEY)
A 9" PINE, BEARS N.55°W., 15.0 FEET (NEW)

S1/16 CORNER COMMON TO SECTIONS 11 & 12
RECOVERED A BENT 1966 BLM BRASS CAP IN A MOUND OF STONE, SET USFS BRASS CAP.

USBLM
S1/16
11|12
1999
N. 1719670.18
E. 1420454.94
EL. 7050.48
Δα 017°19.1'
C.F. 0.999613735

FROM REESTABLISHED CORNER:
THE NW CABIN COR., BEARS N.44°09'E., 62.67 FEET (GRID BEARING)
THE SW CABIN COR., BEARS N.67°08'E., 53.05 FEET (GRID BEARING)

W1/4 CORNER OF SECTION 12
RECOVERED A 1966 & 1965 BLM BRASS CAP

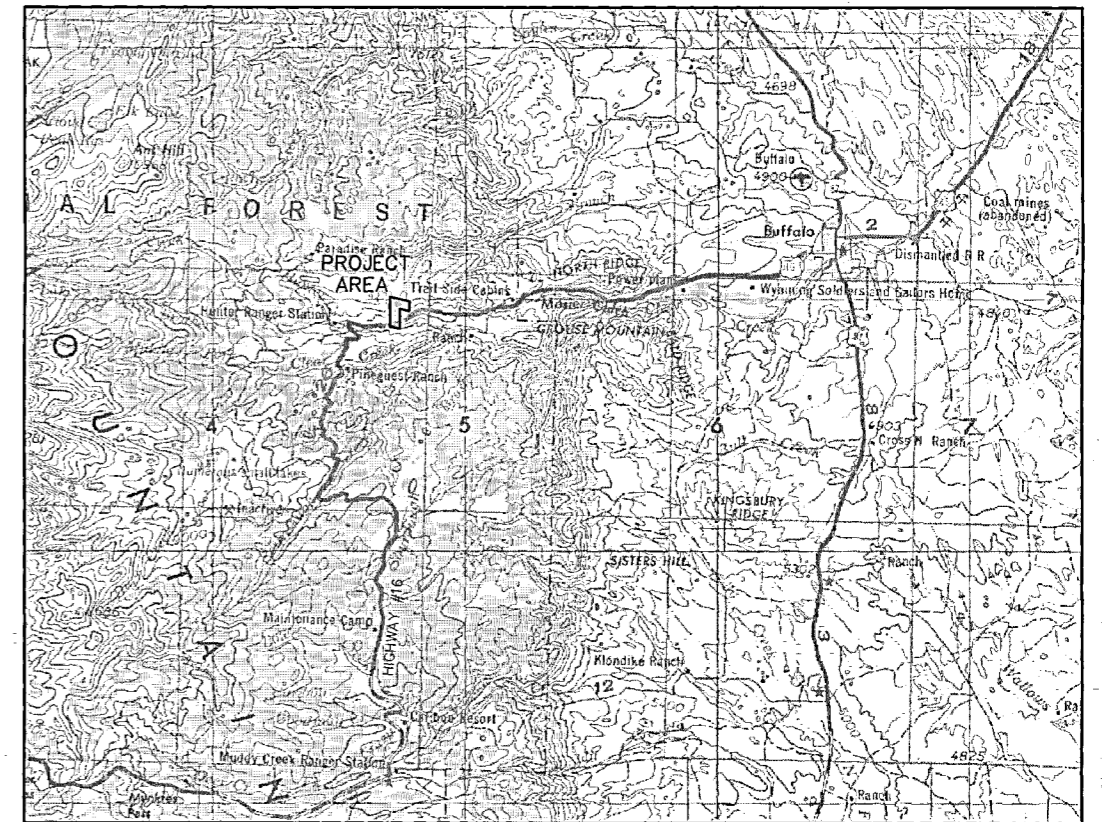
USBLM
1/4
11|12
1965
N. 1720986.43
E. 1420445.28
EL. 7276.45
Δα 017°19.1'
C.F. 0.999602932

FROM RECOVERED CORNER:
CHISELED "X" IN ROCK BEARS N.70°W., 8.9 FEET (NEW)
CHISELED "X" IN ROCK BEARS N.71°E., 9.5 FEET (NEW)

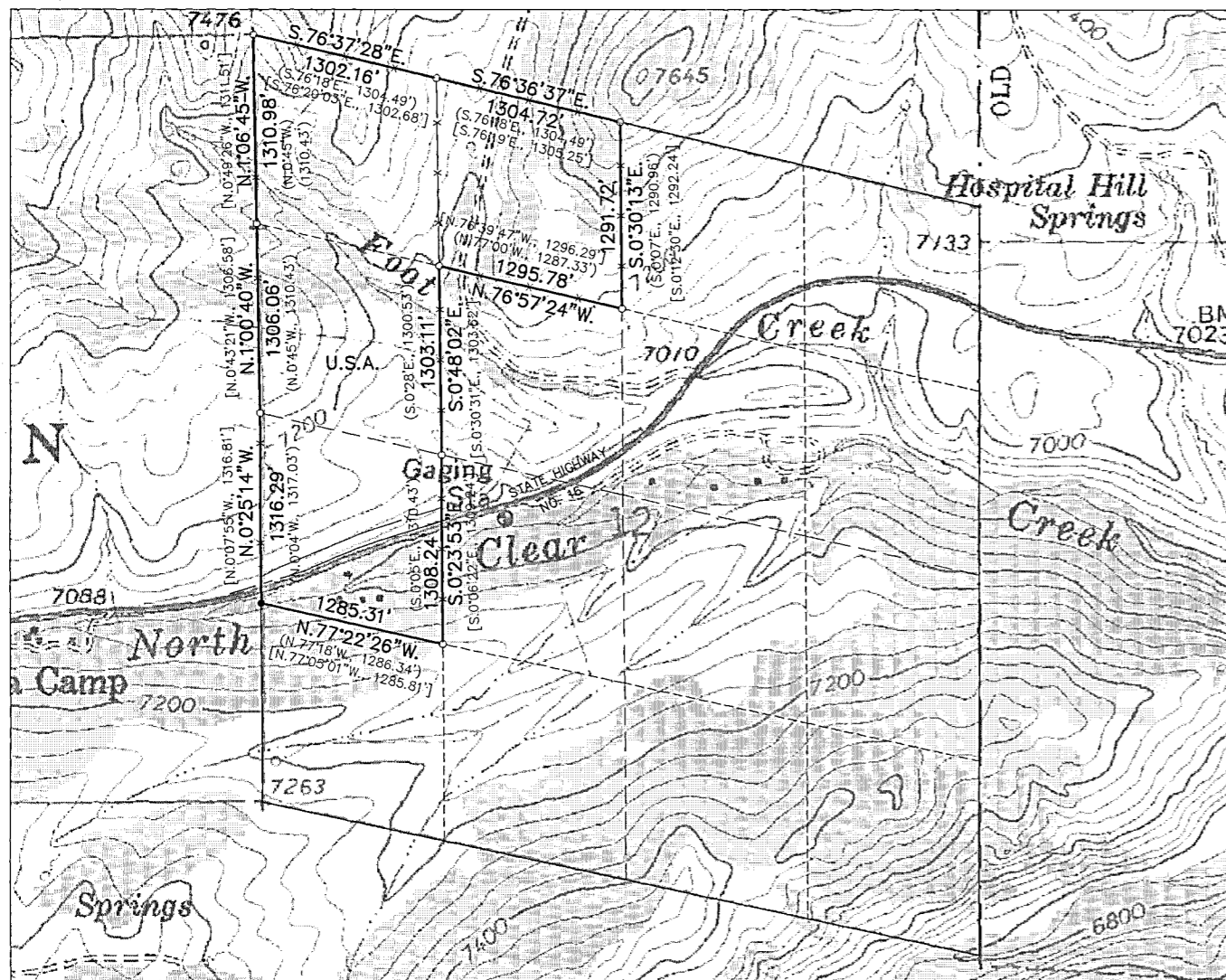
N1/16 CORNER COMMON TO SECTIONS 11 & 12
RECOVERED A 1966 BLM BRASS CAP IN A MOUND OF STONE.

USBLM
N1/16
11|12
1966
N. 1722292.29
E. 1420422.23
EL. 7302.38
Δα 017°19.0'
C.F. 0.999601687

FROM RECOVERED CORNER:
A PINE TREE BEARS N.5°E., 17.3 FEET (RESURVEY)
A 6" PINE TREE BEARS S.40°W., 32.5 FEET (NEW)



VICINITY MAP
NTS



NOTES

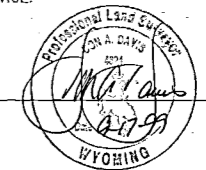
- OFFICIAL MONUMENT RECORDS HAVE BEEN FILED WITH THE STATE OF WYOMING FOR ALL PROPERTY AND/OR CONTROLLING CORNERS RELATED TO THIS SURVEY IN COMPLIANCE WITH THE CORNER PERPETUATION AND FILING ACT, TITLE 33, CHAPTER 29, WYOMING STATUTES JULY 1, 1997.
- THE FOREST SERVICE DID NOT REQUEST RIGHTS-OF-WAYS AND EASEMENTS RESEARCHED OR SHOWN ON THIS PLAT. HIGHWAY #16 IS UNDER DESIGN AND CONVERSATION WITH REPRESENTATIVES OF THE WYOMING DEPARTMENT OF TRANSPORTATION REVEALED NO RECORD WIDTH OR MONUMENTATION ASSOCIATED WITH THIS PORTION OF HIGHWAY.
- COORDINATE POSITIONS ARE BASED ON WYOMING EAST CENTRAL ZONE STATE PLANE COORDINATES AND U.S. SURVEY FOOT.

BASIS OF BEARING

BASIS OF BEARING WAS NORTH AMERICAN DATUM OF 1983 ADJUSTED 1993 (HIGH ACCURACY REFERENCE NETWORK) AND THE NORTH AMERICAN VERTICAL DATUM OF 1988, AND GENERATED FROM USC&GS HARN STATION K-38 NEAR BUFFALO.

CERTIFICATE OF SURVEY

I, DON A. DAVIS REGISTERED LAND SURVEYOR NO. 4824, STATE OF WYOMING, DO HEREBY STATE THAT THIS PLAT CORRECTLY REPRESENTS A SURVEY MADE BY ME OR UNDER MY DIRECTION IN CONFORMANCE WITH THE LAWS OF THE STATE OF WYOMING AND AT THE REQUEST OF THE U.S. DEPARTMENT OF AGRICULTURE, FOREST SERVICE.

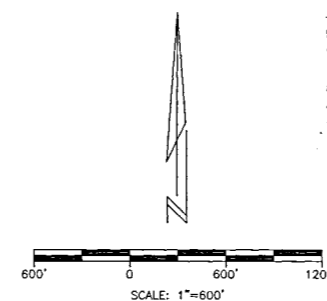


LEGEND

- S.76°37'28"E., 1302.16' (S.76°18'E., 1304.49')
- [N.77°05'01"W., 1284.81']
- RECOVERED 1966 BLM BRASS CAP
- RECOVERED 1966 BLM B.C., SET USFS BRASS CAP
- BOUNDARY POSTED & MARKED

074933

STATE OF WYOMING }
COUNTY OF JOHNSON }
This plat was filed for record on 10-1-99
at 3:30 P.M. and is subject to recording on 10-2-99
by Don A. Davis
Professional Land Surveyor



U.S. DEPARTMENT OF AGRICULTURE FOREST SERVICE BIGHORN NATIONAL FOREST		
FOREST PROPERTY BOUNDARY FOOTCREEK CADASTRAL SURVEY PORTIONS OF SECTION 12, TOWNSHIP 50 NORTH, RANGE 84 WEST, OF THE 6TH PRINCIPAL MERIDIAN, JOHNSON COUNTY, WYOMING		
SURVEYED BY: _____	DATE: _____	DRAWN: JSJ
REVIEWED AND BASED UPON AVAILABLE INFORMATION RECOMMEND ACCEPTANCE: _____	DATE: _____	CHECKED: _____
THIS SURVEY REPRESENTED BY THIS PLAT WAS MADE AT MY REQUEST AND ACCEPTED FOR NATIONAL FOREST MANAGEMENT PURPOSES: _____		DATE: _____
		SHEET 1 OF 1