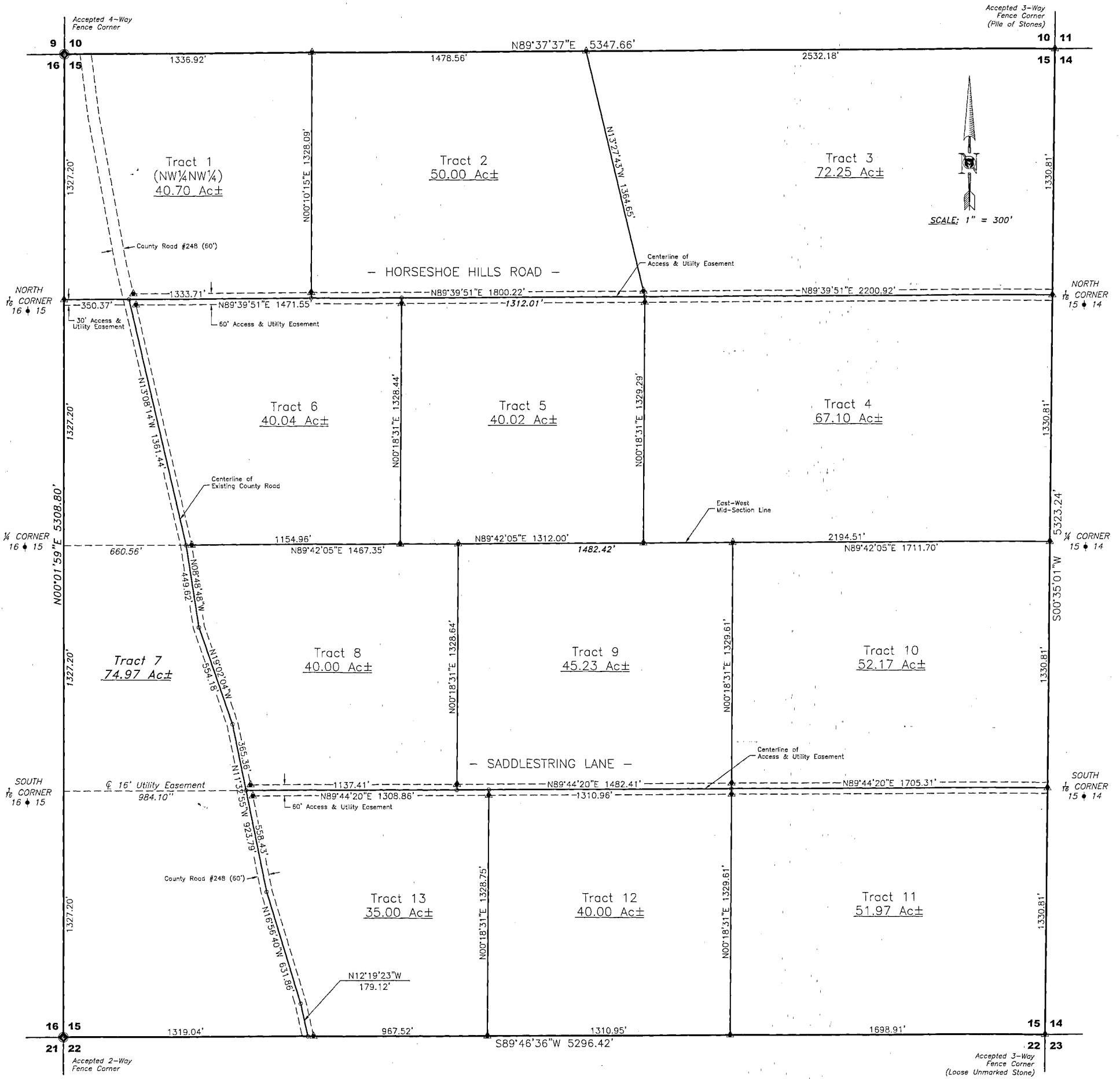


HORSESHOE HILLS

SECTION 15, T48N, R81W, JOHNSON COUNTY, WYOMING



Certificate of Surveyor

I, **Keith A. Neustel**, being a duly Registered Professional Land Surveyor in the State of Wyoming, do hereby certify that this plat represents an actual field survey made under my direct supervision in October and November of 2006, and that this Certificate of Survey correctly represents the results of the survey.



STATE OF WYOMING)
COUNTY OF JOHNSON)

This instrument was filed for record on the 29th day of December, 2006, at 10:50 A.M., and was duly recorded on Hanging File, page 277.

Fee: \$ 50.00 0G1222

Jane Candrup
Register of Deeds

Legend

- ▲ = Set Aluminum Capped Rebar (Stamped "PELS 2085")
- = Accepted Fence Corner (No Monument)

1. NO PUBLIC MAINTENANCE OF STREETS OR ROADS.
2. NO PROPOSED DOMESTIC WATER SOURCE.
3. NO PROPOSED PUBLIC SEWAGE DISPOSAL SYSTEM.

PROTECTIVE COVENANTS ARE RECORDED IN BOOK 86A-62, PAGES 169-177.

SECTION 15, T48N, R81W, 6th PM JOHNSON COUNTY, WYOMING		CERTIFICATE OF SURVEY	GRIZZLY ENGINEERING CONSULTING ENGINEERS and LAND SURVEYORS
		Prepared for: Combined Investments, LLC 360 N Main St Buffalo, WY 82834	P.O. BOX 1004 BUFFALO, WYOMING 82834
			307/684-7029
			Date Drawn: 12/13/2006 Scale: See Drawing
			Drawn By: FPJ Checked By: KAN
			Project No: B06-067 File Name: 06-067.dwg
			Horseshoe Hills
No.	DATE	REVISION DESCRIPTION	BY