

North Line of S1/2SW1/4SE1/4 Sec. 26
 N89°36'48"E 428.81'



SCALE: 1" = 40'
 Zoning B-1 Business District

LEGEND

- ⊙ = EXISTING ALUMINUM CAPPED REBAR
- = EXISTING REBAR
- △ = ALUMINUM CAPPED REBAR, STAMPED PE&LS 2085
- ⊕ = HIGHWAY RIGHT OF WAY MARKER
- ⊠ = CHISELED "X" IN CONCRETE



APPROVALS

The City of Buffalo Planning Commission hereby recommends approval of this plat on this 25th day of April, 2000

Donald P. Kuan Chairman
Johnny Secretary

Approved by the Buffalo City Council this 16th day of May, 2000.
Neil B. Jagers Mayor
Kay E. Wurst Attest City Clerk

INDIAN CAMPGROUND ADDITION TO THE CITY OF BUFFALO, WYOMING

A tract of land located in the S1/2SW1/4 of Section 26, T51N, R82W, of the 6th P.M., Johnson County, Wyoming, said tract being more particularly described as follows:

Commencing at the South 1/4 corner of said Section 26;
 thence N89°35'17"E along the South line of said Section 26 a distance of 318.70 feet to a point, said point being the true point of beginning;
 thence N00°32'11"W a distance of 268.88 feet to a point;
 thence S89°23'59"W a distance of 200.00 feet to a point;
 thence N00°32'11"W a distance of 395.55 feet to a point;
 thence N89°36'48"E a distance of 428.81 feet to a point;
 thence S00°43'26"W a distance of 334.25 feet to a point;
 thence S09°23'06"E a distance of 131.00 feet to a point;
 thence S89°35'17"W a distance of 170.56 feet to a point;
 thence S00°24'43"E a distance of 200.00 feet to a point, said point lying on said South line of said Section 26;
 thence S89°35'17"W along said South line of said Section 26 a distance of 70.61 feet to the true point of beginning.

Said tract containing 4.55 acres, more or less.
 The undersigned proprietors of the above described tract of land have caused the same to be subdivided in the manner shown on this plat which subdivision shall be known as the "INDIAN CAMPGROUND ADDITION".

Said plat is proposed and offered with free consent and in accordance with the desires of the undersigned owners and proprietors, and the undersigned owners and proprietors do hereby release and waive all rights, under and by virtue of the homestead and exemption laws of the State of Wyoming.

IN TESTIMONY WHEREOF, Steven L. Gunsolley and Marjorie E. Gunsolley have caused these present to be signed this 24th day of April, 2000.

Steven L. Gunsolley Steven L. Gunsolley
Marjorie E. Gunsolley Marjorie E. Gunsolley

STATE OF WYOMING }
 COUNTY OF JOHNSON } ss

The foregoing instrument was acknowledged before me by Steven L. Gunsolley and Marjorie E. Gunsolley this 24th day of April, 2000.



Keith A. Neustel
 Notary Public

My Commission Expires: 9/27/02

State of Wyoming }
 County of Johnson } ss

This instrument was filed for record on the 10 day of August, 2000, at 2:00 P.M., and was duly recorded in Plat Book # 2, Page 184.
 Fee: \$ 50.00

Lisa Barbart Register of Deeds
 By: Deputy



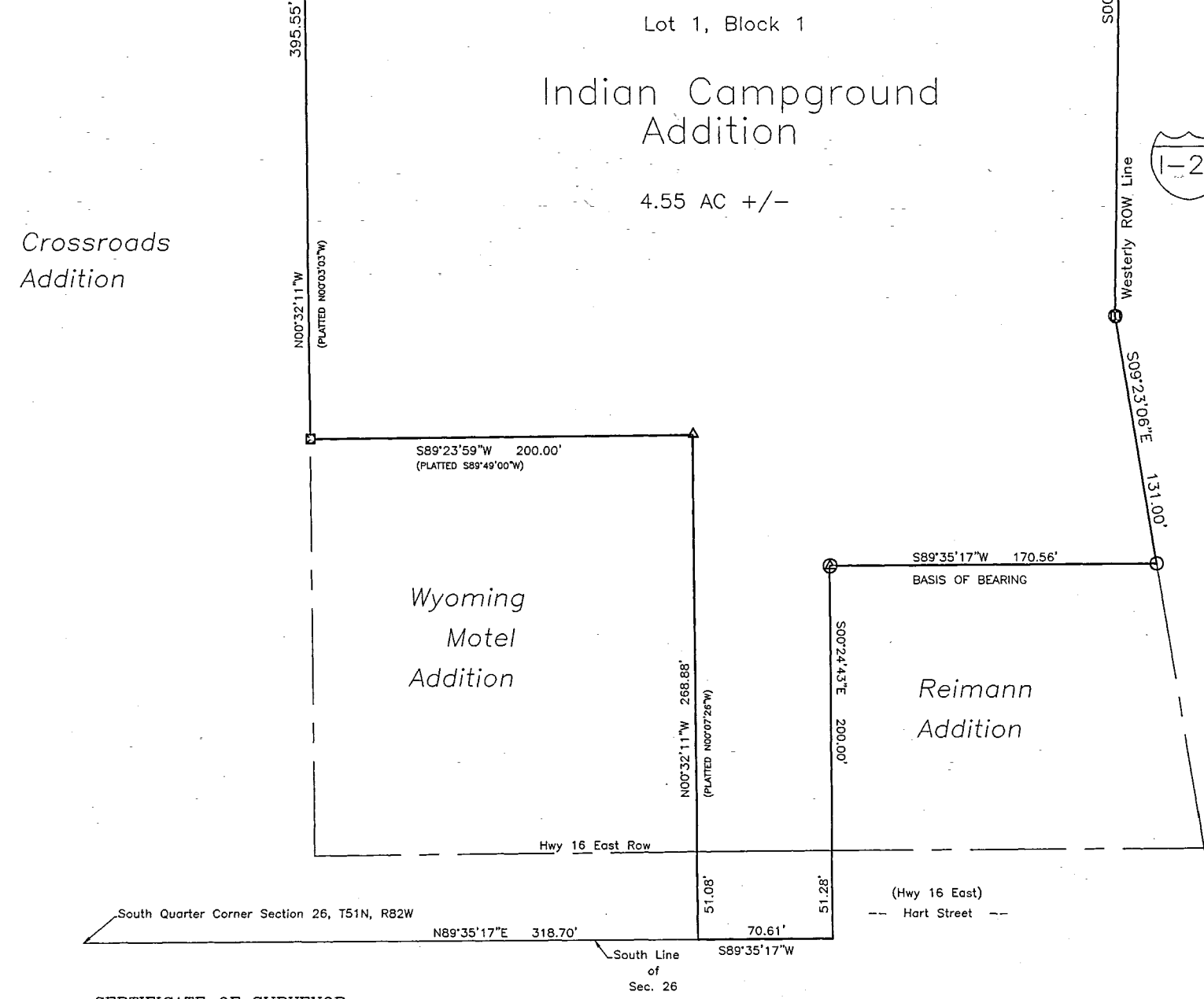
Final Plat

Indian Campground Addition to the City of Buffalo, Wyoming

Prepared for: Steve Gunsolley
 660 Hart Street
 Buffalo, WY 82834



P.O. BOX 1004
 BUFFALO, WYOMING 82834
 307/684-7029
 Date Drawn: 4/24/2000 Scale: 1" = 40'
 Drawn By: GT Checked By: KAN
 Project No: 99-108 File Name: INDINCAM.dwg



CERTIFICATE OF SURVEYOR

I, Keith A. Neustel, a duly registered Land Surveyor in the State of Wyoming, do hereby certify that this plat was made from an actual field survey made by me and from plats filed with the Clerk of Johnson County, Wyoming, of the Reimann Addition to the City of Buffalo, Wyoming, the Wyoming Motel Addition to the City of Buffalo, Wyoming, and the Crossroads Addition to the City of Buffalo, Wyoming.

