

**LOT SPLIT OF LOT 1, BLOCK 1,
INTERMOUNTAIN CONSTRUCTION & MATERIALS ADDITION TO
THE CITY OF BUFFALO, WYOMING**

LAND DESCRIPTION

A tract of land being Lot 1, Block 1, Intermountain Construction & Materials Addition to the City of Buffalo, Johnson County, Wyoming, as recorded in Hanging Files, page 266, in the Johnson County Clerk and Recorder's Office.

STATEMENT ON EASEMENTS

All easements either recorded or as shown on this plat are hereby dedicated for their stated or intended use.

OWNERS STATEMENT

Intermountain Construction & Materials, Inc. as owner and proprietor of the above and foregoing lands, does hereby certify that they have caused the "Lot Split of Lot 1, Block 1, Intermountain Construction & Materials Addition to the City of Buffalo" as appears on this plat.

Said plat is prepared and offered with free consent and in accordance with the desires of the undersigned owner and proprietor, containing 5.02 acres, more or less.

Said owner and proprietor has by these present, laid out and surveyed as "Lot Split of Lot 1, Block 1, Intermountain Construction & Materials Addition to the City of Buffalo".

Witness our hands this 10th day of February, 2011.

Jeff Dahlen
Intermountain Construction and Materials, Inc.
Jeff Dahlen, General Manager
Buffalo and Sheridan Offices

STATE OF WYOMING }
COUNTY OF JOHNSON } ss

The foregoing instrument was acknowledged before me by Jeff Dahlen, General Manager (Buffalo & Sheridan Offices), Intermountain Construction and Materials, Inc., a Wyoming Corporation, who acknowledged said instrument to be the free act and deed of said corporation this 10th day of February, 2011.

Witness my hand and official seal.

Brent Bennett
Notary Public

My Commission Expires: Sept. 23, 2014



APPROVALS

Approved by the City of Buffalo Planning Commission this 22nd day of FEBRUARY, 2011.

Stephen J. Robinson
Chairperson

Craig Cato
Attest: Secretary

Approved by the Buffalo City Council this 10 day of MAY, 2011.

Mark Kauffman
Mayor

Julie Silbermagel
Attest: City Clerk

PLAT FILING INFORMATION

STATE OF WYOMING }
COUNTY OF JOHNSON } ss

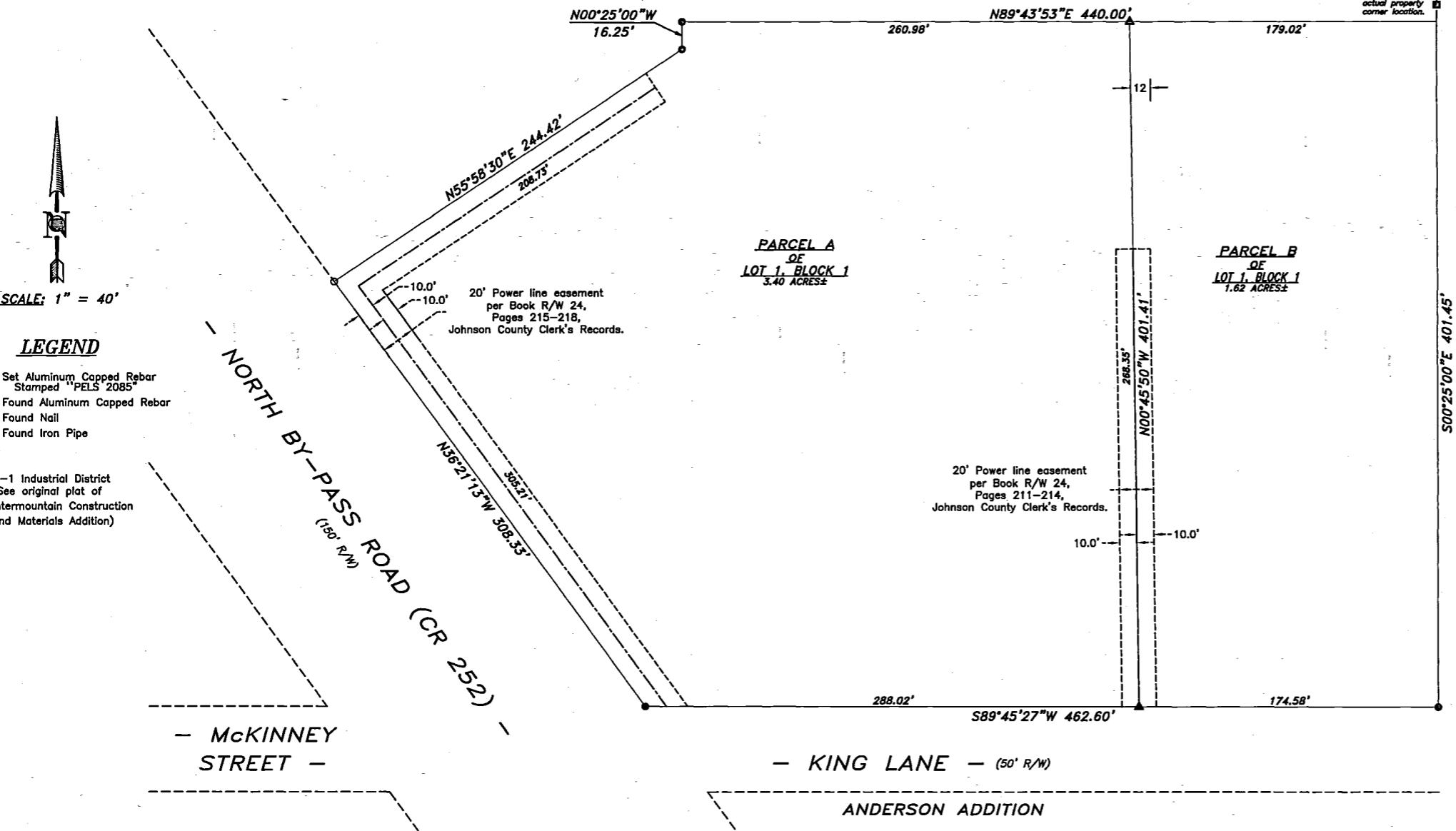
STATE OF WYOMING }
COUNTY OF JOHNSON } ss
Doc Number: 111619
This instrument was filed for record on 6/16/2011 at 9:20 AM
and was duly recorded in book: page: - 0 fees: 50.00
By *Mark Kauffman* Johnson County Clerk
ASST. Deputy

This instrument was filed for record on the 16th day of June, 2011, at 9:20 AM and was duly recorded on Hanging File page 338.

Fee: \$ 50.00

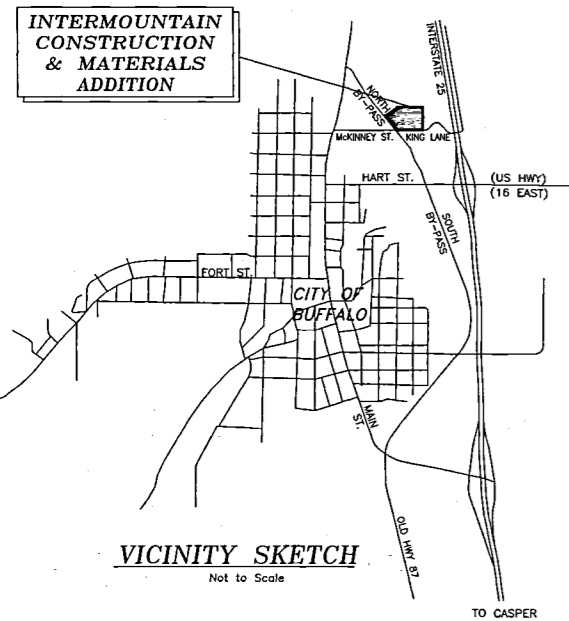
Register of Deeds

Mark Kauffman
By: Deputy



- LEGEND**
- ▲ = Set Aluminum Capped Rebar Stamped "PELS 2085"
 - = Found Aluminum Capped Rebar
 - = Found Nail
 - = Found Iron Pipe

Zoning: M-1 Industrial District
(See original plat of Intermountain Construction and Materials Addition)



CERTIFICATE OF SURVEYOR

STATE OF WYOMING }
COUNTY OF JOHNSON } ss

I, **KEITH A. NEUSTEL**, a duly registered Land Surveyor in the State of Wyoming, do hereby certify that this certificate was prepared from notes made during an actual field survey, by Fred Janssen in September of 2006, and that said information is accurately represented hereon.



FINAL PLAT	Prepared for: Intermountain Construction & Materials 1618 KROE Lane Sheridan, WY 82801
	Lot Split of Lot 1, Block 1, Intermountain Construction & Materials Addition
No. DATE	REVISION DESCRIPTION