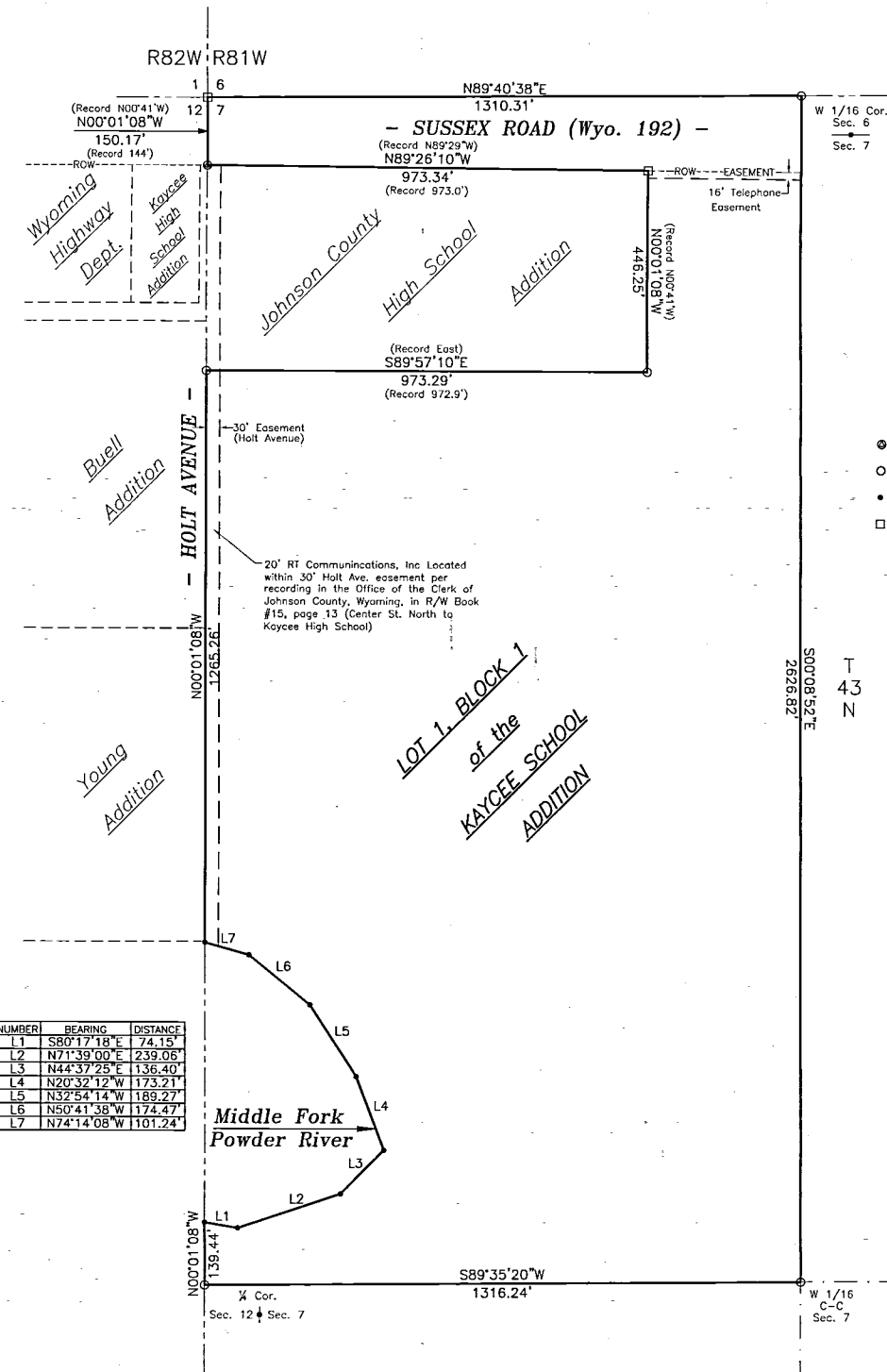


KAYCEE SCHOOL ADDITION

to the
TOWN of KAYCEE, WYOMING

KAYCEE SCHOOL ADDITION to the TOWN of KAYCEE, WYOMING



SCALE: 1" = 200'

- = Existing Aluminum Capped Rebar
- = Aluminum Capped Rebar, Stamped "PE&LS 2085"
- = Property Corner Location
- = Iron Pipe

A tract of land located in Lot 1 and Lot 2, Section 7, T43N, R81W, of the 6th P.M., Johnson County, Wyoming, said tract of land being more particularly described as follows:

Commencing at the northwest corner of said Section 7, said northwest corner being the true point of beginning;

thence along the North line of said Section 7, N89°40'38"E a distance of 1310.31 feet to a point, said point being the West 1/16th corner common to said Section 7 and Section 6, T43N, R81W;

thence along the East line of said Lot 1 and said Lot 2 of said Section 7, S00°08'52"E a distance of 2626.82 feet to a point, said point being the West 1/16th corner of said Section 7;

thence along the East-West Mid-Section line of said Section 7, S89°35'20"W a distance of 1316.24 feet to a point, said point being the West ¼ corner of said Section 7;

thence along the West line of said Section 7, N00°01'08"W a distance of 139.44 feet to a point, said point lying on the centerline of Middle Fork of the Powder River;

thence along said centerline of said Middle Fork of the Powder River, S80°17'18"E a distance of 74.15 feet to a point;

thence continuing along said centerline of said Middle Fork of the Powder River, N71°39'00"E a distance of 239.06 feet to a point;

thence continuing along said centerline of said Middle Fork of the Powder River, N44°37'25"E a distance of 136.40 feet to a point;

thence continuing along said centerline of said Middle Fork of the Powder River, N20°32'12"W a distance of 173.21 feet to a point;

thence continuing along said centerline of said Middle Fork of the Powder River, N32°54'14"W a distance of 189.27 feet to a point;

thence continuing along said centerline of said Middle Fork of the Powder River, N50°41'38"W a distance of 174.47 feet to a point;

thence continuing along said centerline of said Middle Fork of the Powder River, N74°14'08"W a distance of 101.24 feet to a point, said point lying on said West line of said Section 7;

thence along said West line of said Section 7, N00°01'08"W a distance of 1265.26 feet to a point, said point being the southwest corner of the Johnson County High School Addition to the Town of Kaycee, Wyoming;

thence along the South line of said Johnson County High School Addition to the Town of Kaycee, Wyoming, S89°57'10"E (Record East) a distance of 973.29 feet (Record 972.9 feet) to a point, said point being the southeast corner of said Johnson County High School Addition to the Town of Kaycee, Wyoming;

thence along the East line of said Johnson County High School Addition to the Town of Kaycee, Wyoming, N00°01'08"W (Record N00°41'W) a distance of 446.25 feet to a point, said point being the northeast corner of said Johnson County High School Addition to the Town of Kaycee, Wyoming;

thence along the North line of said Johnson County High School Addition to the Town of Kaycee, Wyoming, N89°26'10"W (Record N89°29'W) a distance of 973.34 feet (Record 973.0 feet) to a point, said point being the northwest corner of said Johnson County High School Addition to the Town of Kaycee, Wyoming, and said point also lying on said West line of said Section 7;

thence along said West line of said Section 7, N00°01'08"W (Record N00°41'W) a distance of 150.17 feet (Record 144') to the true point of beginning of said tract of land.

Said tract of land containing 65.22 acres, more or less.

The undersigned owners and proprietors of the above described tract of land have caused the same to be subdivided in the manner shown on this plat, which subdivision shall be known as the "KAYCEE SCHOOL ADDITION".

Said plat is proposed and offered with the free consent and in accordance with the desires of the undersigned owners and proprietors, and the undersigned owners and proprietors do hereby release and waive all rights under and by virtue of the homestead and exemption laws of the State of Wyoming.

EASEMENTS are hereby dedicated as shown on this plat for the purpose as described.

BOARD OF TRUSTEES OF SCHOOL DISTRICT NO. 1, JOHNSON COUNTY, WYOMING

By: Chairperson

Attest: Secretary

By: Chairperson

Attest: Secretary

By: Chairperson

Attest: Secretary

By: Chairperson

Attest: Secretary

By: Chairperson

Attest: Secretary

By: Chairperson

Attest: Secretary

By: Chairperson

Attest: Secretary

APPROVALS

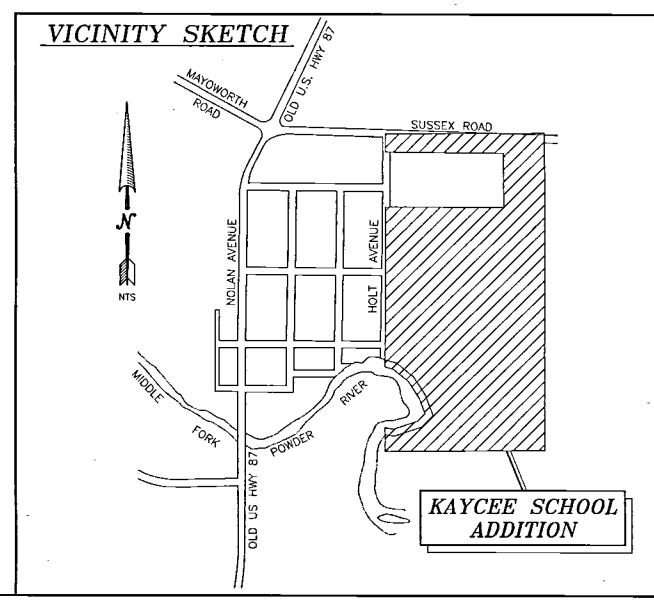
Approved by the Town of Kaycee, Wyoming this 10 day of June, 2003.

Diana E. Contharite Attest: Town Clerk
Ronda Harris Mayor

STATE OF WYOMING)
COUNTY OF JOHNSON) ss 015565

This instrument was filed for record on this 19th day of June, 2003, at 10:20, and was duly recorded in Plat Book No. #2, page 228.

Register of Deeds By: *Jane Carr* Deputy
Fee: \$ 50.00



GRIZZLY ENGINEERING
CONSULTING ENGINEERS and LAND SURVEYORS
P.O. BOX 1004
BUFFALO, WYOMING 82834
307/684-7029
Date Drawn: 06/05/2003 Scale: 1"=200'
Drawn By: FRJ Checked By: KAN
Project No. B03-017 File Name: KCSgd.dwg

Prepared for:
Johnson County School District #1
601 W. 1st St.
Buffalo, WY 82834

FINAL PLAT
KAYCEE SCHOOL ADDITION
to the
Town of Kaycee, Wyoming

No.	DATE	REVISION DESCRIPTION	BY

CERTIFICATE OF SURVEYOR

I, Keith A. Neustel, being a duly Registered Professional Surveyor in the State of Wyoming, do hereby certify that this Plat of the Kaycee School Addition to the Town of Kaycee, Wyoming, represents the conditions as shown based on an actual field survey of existing corners made under my direction by Terry Janssen and deeds of record.

