

LAKEVIEW ACRES SUBDIVISION

The above and foregoing subdivision is hereby designated to be known as LAKEVIEW ACRES, the boundary of which is described as follows:

Beginning at the Northwest corner of Section 27, T 47 N, R 85 W, 6<sup>th</sup> PM, Wyoming, thence S 0° 10' E, along the West Line of said Section 27 a distance of 2694.90 feet to a point on the Centerline of County Road No. 74, thence N 34° 26' 08" E along said centerline a distance of 1273.16 feet, thence along an 8° 45' curve to the right through a central angle of 24° 07' 56" a distance of 275.80 feet, thence N 58° 34' 04" E along said centerline a distance of 613.57 feet, thence along a 2° 45' curve to the right through a central angle of 12° 42' 47" a distance of 462.29 feet, thence N 71° 16' 51" E along said centerline a distance of 380.96 feet, thence along a 13° 30' curve to the right through a central angle of 23° 26' 09" a distance of 173.60 feet, thence S 85° 17' 00" E along said centerline a distance of 258.08 feet to a point on the North-South Centerline of said Section 27, thence N 0° 18' 02" W along said centerline a distance of 167.00 feet to a point on the Dull Knife Reservoir high water line plus 2.00 feet, thence N 78° 43' 18" W along said high water line plus 2 feet a distance of 268.24 feet, thence N 83° 20' 59" W along said high water line plus 2 feet a distance of 224.51 feet, thence S 83° 29' 40" W along said high water line plus 2 feet a distance of 229.48 feet, thence N 21° 02' 15" E along said high water line plus 2 feet a distance of 153.21 feet, thence N 21° 56' 02" W along said high water line plus 2 feet a distance of 160.63 feet, thence N 60° 10' 36" W along said high water line plus 2 feet a distance of 180.97 feet, thence N 59° 38' 29" W along said high water line plus 2 feet a distance of 479.17 feet to a point on the North line of said Section 27, thence S 88° 57' 38" W along said north line a distance of 1366.70 feet to the point of beginning, containing 72.58 acres all lying in the NW 1/4 of said Section 27.

STREETS

Streets shown on this plat and not heretofore dedicated to public use are hereby so dedicated.

IN TESTIMONY WHEREOF Charlotte Pollard Trust, Charles Pollard Administrator, has caused these presents to be signed this 13<sup>th</sup> day of April, 1977.

*Charlotte Pollard Trust, Charles E. Pollard Trustee*  
Charlotte Pollard Trust, Charles Pollard Administrator

STATE OF WYOMING )  
COUNTY OF CAMPBELL )

The foregoing was acknowledged before me this 13<sup>th</sup> day of April, 1977, by Charles Pollard  
Witness my hand and official seal *Deborah H. Jensen*

My Commission Expires 4-7-81

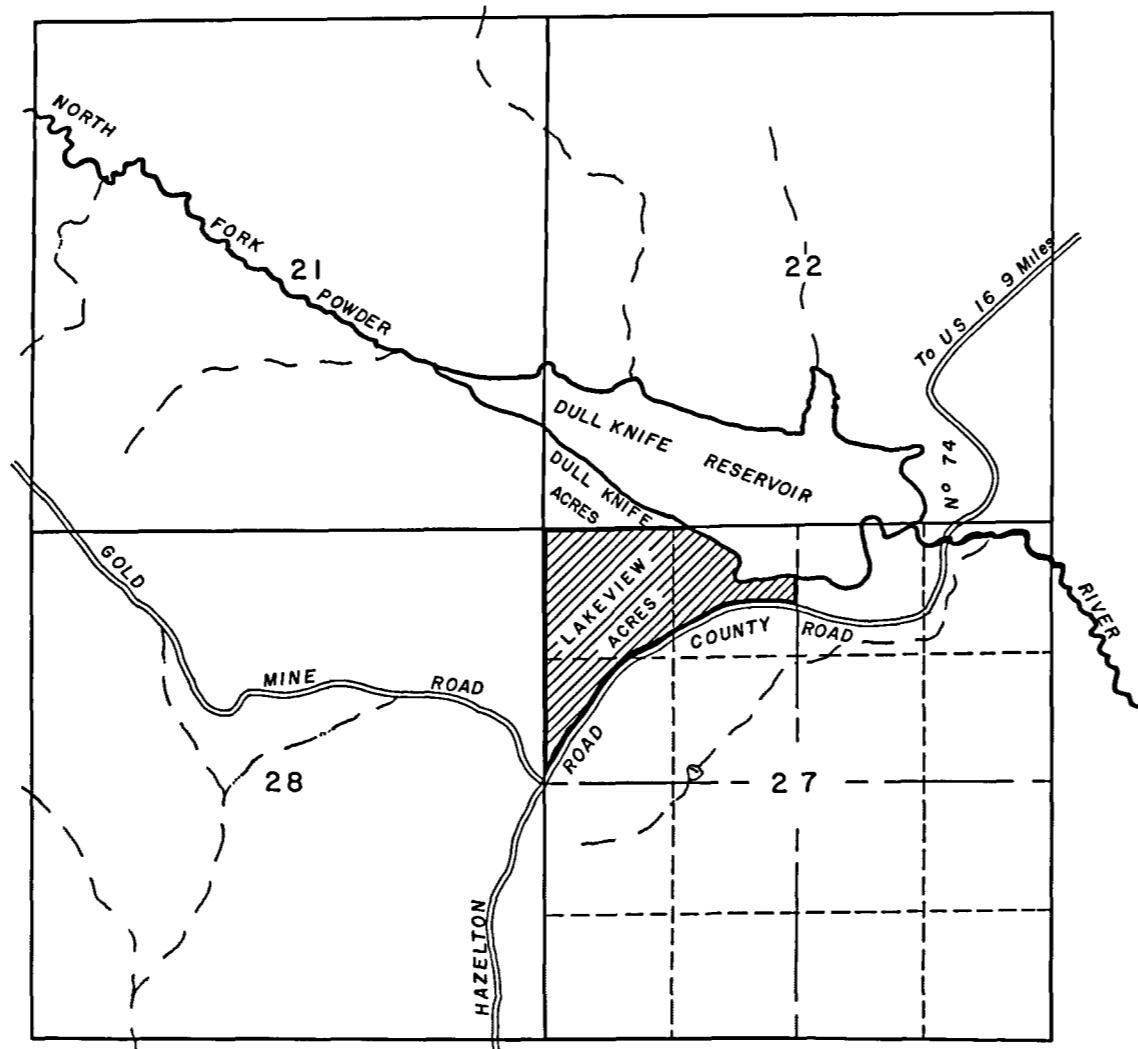
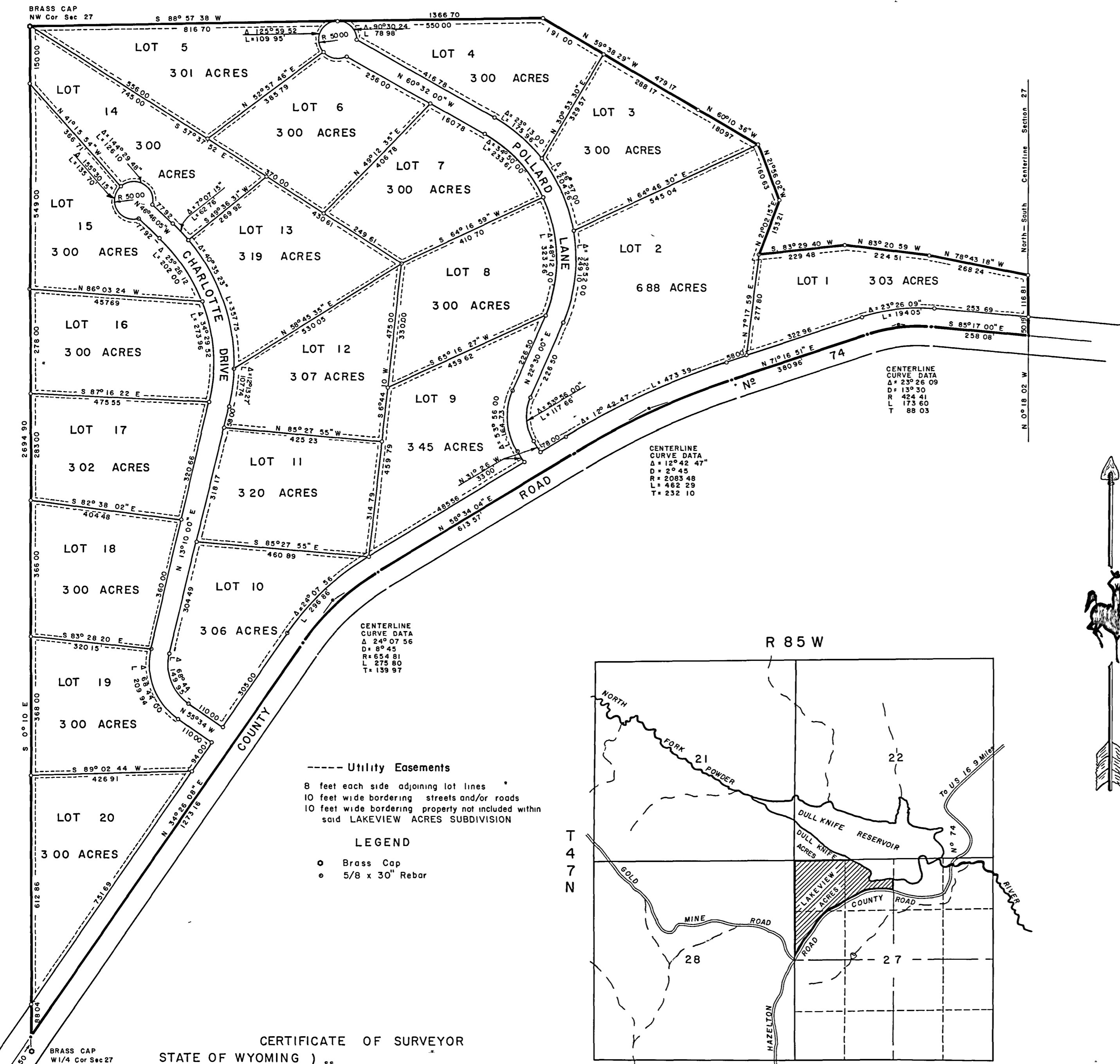
APPROVAL BY THE COUNTY

The Johnson County Planning Commission hereby recommends approval of the foregoing plat this 20<sup>th</sup> day of April, 1977.

*Lee E. Keith*  
Chairman  
*William H. Phipps*  
Secretary

The foregoing plat is hereby approved by the Board of County Commissioners of the County of Johnson, State of Wyoming by resolution duly passed on the 3<sup>rd</sup> day of May, 1977.

*Sumner J. Shelton*  
Chairman of the Board  
Attest *William P. Phipps*  
County Clerk



Utility Easements  
8 feet each side adjoining lot lines  
10 feet wide bordering streets and/or roads  
10 feet wide bordering property not included within said LAKEVIEW ACRES SUBDIVISION

LEGEND  
○ Brass Cap  
○ 5/8 x 30" Rebar

CERTIFICATE OF SURVEYOR  
STATE OF WYOMING )  
COUNTY OF JOHNSON )

I, John B. Wesnitzer of Buffalo, Wyoming, hereby certify that I am a registered land surveyor, Registration No 2086 licensed under the laws of the State of Wyoming, that this plat is a true, correct, and complete plat of the LAKEVIEW ACRES SUBDIVISION as laid out, platted, dedicated, and shown hereon, that such plat was made from an accurate survey of said land by me and that it correctly represents and show the location and dimensions of the lots, easements, and streets of said subdivision as the same are staked upon the ground.  
June 23, 1976

*John B. Wesnitzer*  
Surveyor

Covenants filed in Book 26418 Page 408

VICINITY MAP  
Scale 1" = 2000'

No proposed public water source  
No proposed public sewage disposal system  
No public maintenance of road

STATE OF WYOMING )  
COUNTY OF JOHNSON )  
This instrument was filed for record on June 7, 1977 at 2:30 P.M. and was duly recorded in Book 2, Page 14. Fee \$25.00  
*William P. Phipps* Register of Deeds  
By \_\_\_\_\_ Deputy

MAP OF THE  
LAKEVIEW ACRES  
SUBDIVISION

JOHNSON COUNTY  
WYOMING  
Scale 1" = 200'

PREPARED BY  
R G STUCKERT & ASSOCIATES, INC  
MARCH 1977