

SECTION DETAIL
SCALE: 1"=1000'

LEGAL DESCRIPTION, COUNTY ROAD #43, MUDDY CREEK ROAD

A change in County Road Survey #43 located in parts of the SW of Section 28, the SE 1/4 of Section 32, and the NW of Section 33, all in Township 49 North, Range 82 West of the 6th Principal Meridian, Johnson County, Wyoming. Said change having a ROW width of 60 feet, being 30 feet on each side of the following described centerline:

Beginning at a point on the centerline of the existing County Road #14, Crazy Woman Canyon Road, located N 24°54'29" W a distance of 2403.41 feet from the SE corner of said Section 28, as monumented by a 2.5" Aluminum Cap stamped PELS 8663;

Thence S 30°48'13" W a distance of 269.19 feet;

Thence along a curve to the left with a radius of 1100.00 feet, an arc length of 259.65 feet, and a delta angle of 13°31'28";

Thence S 17°16'45" W a distance of 383.50 feet;

Thence along a curve to the right with a radius of 1200.00 feet, an arc length of 221.91 feet, and a delta angle of 10°35'43";

Thence S 27°52'29" W a distance of 221.64 feet;

Thence along a curve to the right with a radius of 155.00 feet, an arc length of 252.69 feet, and a delta angle of 93°24'28";

Thence N 58°43'03" W a distance of 138.34 feet;

Thence along a curve to the left with a radius of 600.00 feet, an arc length of 330.74 feet, and a delta angle of 31°35'01";

Thence S 89°41'56" W a distance of 3.16 feet;

Thence along a curve to the left with a radius of 300.00 feet, an arc length of 282.51 feet, and a delta angle of 53°57'18";

Thence S 35°44'37" W a distance of 56.86 feet;

Thence along a curve to the left with a radius of 700.00 feet, an arc length of 188.41 feet, and a delta angle of 15°25'19";

Thence S 20°19'19" W a distance of 19.67 feet;

Thence along a curve to the left with a radius of 500.00 feet, an arc length of 184.73 feet, and a delta angle of 21°10'08";

Thence S 00°50'49" E a distance of 274.32 feet;

Thence along a curve to the right with a radius of 1000.00 feet, an arc length of 260.46 feet, and a delta angle of 14°55'24";

Thence S 14°04'36" W a distance of 242.96 feet;

Thence along a curve to the right with a radius of 1000.00 feet, an arc length of 71.89 feet, and a delta angle of 04°07'08";

Thence S 18°11'44" W a distance of 172.90 feet;

Thence along a curve to the right with a radius of 750.00 feet, an arc length of 364.29 feet, and a delta angle of 27°49'47";

Thence S 46°01'31" W a distance of 726.19 feet;

Thence along a curve to the left with a radius of 1500.00 feet, an arc length of 164.67 feet, and a delta angle of 06°17'23";

Thence S 39°44'08" W a distance of 65.64 feet;

Thence along a curve to the right with a radius of 750.00 feet, an arc length of 321.71 feet, and a delta angle of 24°34'37";

Thence S 64°18'45" W a distance of 160.18 feet;

Thence along a curve to the left with a radius of 700.00 feet, an arc length of 45.44 feet, and a delta angle of 03°43'09";

Thence S 60°35'36" W a distance of 165.34 feet;

Thence along a curve to the right with a radius of 270.00 feet, an arc length of 236.43 feet, and a delta angle of 50°10'17";

Thence N 69°14'07" W a distance of 144.83 feet;

Thence along a curve to the left with a radius of 3000.00 feet, an arc length of 328.66 feet, and a delta angle of 06°16'37";

Thence N 75°30'44" W a distance of 182.72 feet;

Thence along a curve to the left with a radius of 1500.00 feet, an arc length of 115.30 feet, and a delta angle of 04°24'15";

Thence N 79°54'59" W a distance of 14.18 feet;

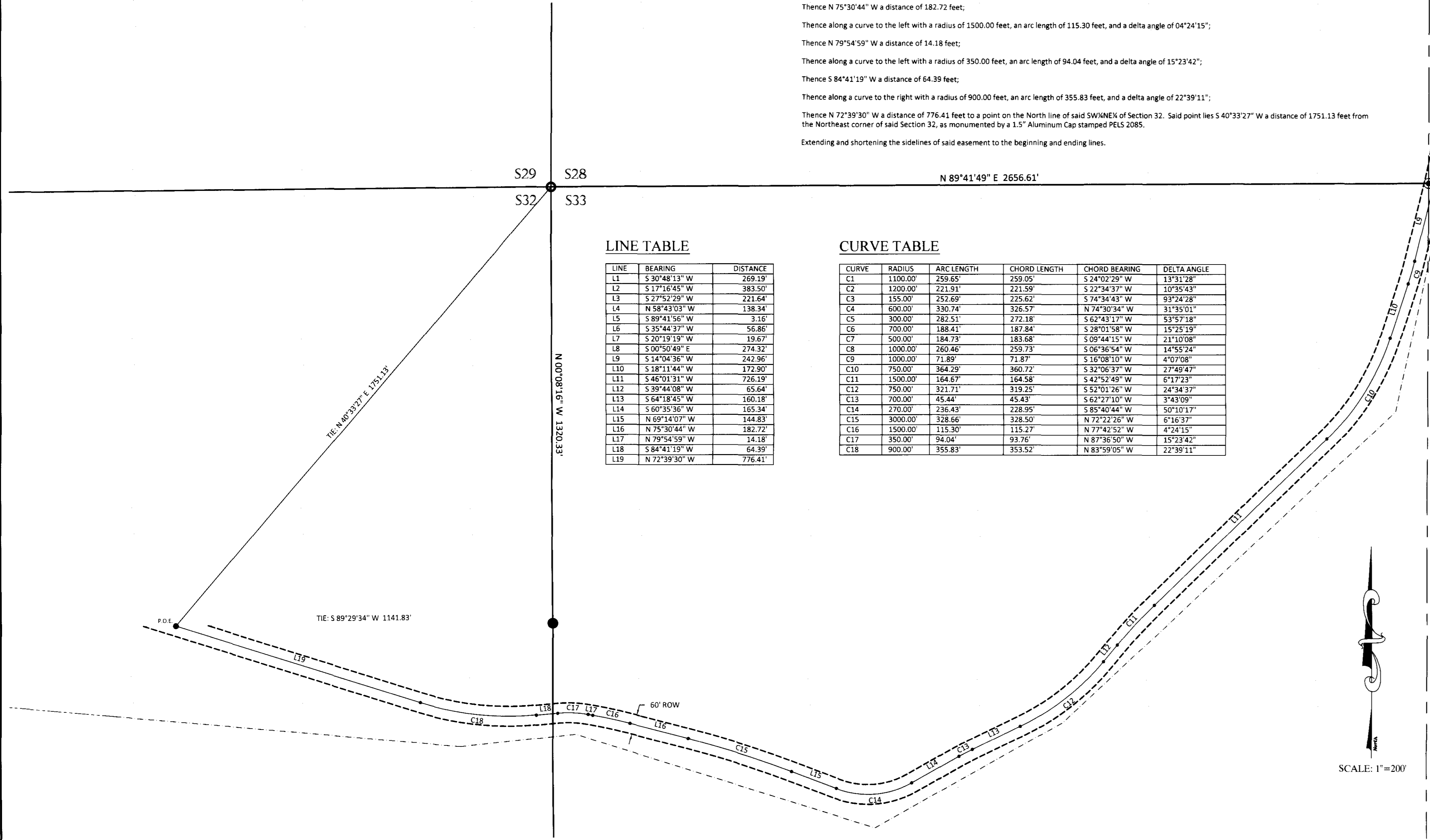
Thence along a curve to the left with a radius of 350.00 feet, an arc length of 94.04 feet, and a delta angle of 15°23'42";

Thence S 84°41'19" W a distance of 64.39 feet;

Thence along a curve to the right with a radius of 900.00 feet, an arc length of 355.83 feet, and a delta angle of 22°39'11";

Thence N 72°39'30" W a distance of 776.41 feet to a point on the North line of said SW 1/4 of Section 32. Said point lies S 40°33'27" W a distance of 1751.13 feet from the Northeast corner of said Section 32, as monumented by a 1.5" Aluminum Cap stamped PELS 2085.

Extending and shortening the sidelines of said easement to the beginning and ending lines.



LINE TABLE

LINE	BEARING	DISTANCE
L1	S 30°48'13" W	269.19'
L2	S 17°16'45" W	383.50'
L3	S 27°52'29" W	221.64'
L4	N 58°43'03" W	138.34'
L5	S 89°41'56" W	3.16'
L6	S 35°44'37" W	56.86'
L7	S 20°19'19" W	19.67'
L8	S 00°50'49" E	274.32'
L9	S 14°04'36" W	242.96'
L10	S 18°11'44" W	172.90'
L11	S 46°01'31" W	726.19'
L12	S 39°44'08" W	65.64'
L13	S 64°18'45" W	160.18'
L14	S 60°35'36" W	165.34'
L15	N 69°14'07" W	144.83'
L16	N 75°30'44" W	182.72'
L17	N 79°54'59" W	14.18'
L18	S 84°41'19" W	64.39'
L19	N 72°39'30" W	776.41'

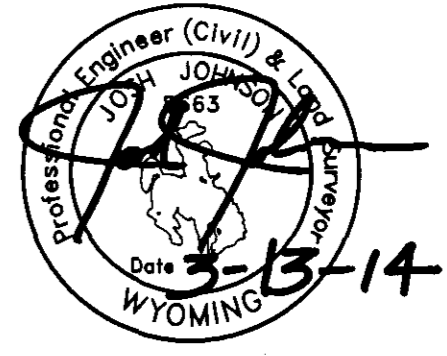
CURVE TABLE

CURVE	RADIUS	ARC LENGTH	CHORD LENGTH	CHORD BEARING	DELTA ANGLE
C1	1100.00'	259.65'	259.05'	S 24°02'29" W	13°31'28"
C2	1200.00'	221.91'	221.59'	S 22°34'37" W	10°35'43"
C3	155.00'	252.69'	225.62'	S 74°34'43" W	93°24'28"
C4	600.00'	330.74'	326.57'	N 74°30'34" W	31°35'01"
C5	300.00'	282.51'	272.18'	S 62°43'17" W	53°57'18"
C6	700.00'	188.41'	187.84'	S 28°01'58" W	15°25'19"
C7	500.00'	184.73'	183.68'	S 09°44'15" W	21°10'08"
C8	1000.00'	260.46'	259.73'	S 06°36'54" W	14°55'24"
C9	1000.00'	71.89'	71.87'	S 16°08'10" W	4°07'08"
C10	750.00'	364.29'	360.72'	S 32°06'37" W	27°49'47"
C11	1500.00'	164.67'	164.58'	S 42°52'49" W	6°17'23"
C12	750.00'	321.71'	319.25'	S 52°01'26" W	24°34'37"
C13	700.00'	45.44'	45.43'	S 62°27'10" W	3°43'09"
C14	270.00'	236.43'	228.95'	S 85°40'44" W	50°10'17"
C15	3000.00'	328.66'	328.50'	N 72°22'26" W	6°16'37"
C16	1500.00'	115.30'	115.27'	N 77°42'52" W	4°24'15"
C17	350.00'	94.04'	93.76'	N 87°36'50" W	15°23'42"
C18	900.00'	355.83'	353.52'	N 83°59'05" W	22°39'11"

CERTIFICATE OF SURVEYOR

STATE OF WYOMING }
COUNTY OF JOHNSON } SS

I, Josh Johnson, a duly Registered Professional Engineer and Land Surveyor in the State of Wyoming do hereby certify that this plat of County Road #43, Muddy Creek Road, was made from data collected during an actual field survey conducted by me or under my direct supervision in October of 2013, and that the alignment of said Muddy Creek Road is accurately represented on this plat.



LEGEND

- - - - - ALIGNMENT OF CR #43 AS SURVEYED 10/1/2013 ESTABLISHED THIS SURVEY
- - - - - ORIGINAL ESTABLISHED ALIGNMENT OF COUNTY SURVEY #43 VACATED THIS SURVEY
- - - - - ORIGINAL ESTABLISHED ALIGNMENT OF COUNTY SURVEY #43 PREVIOUSLY VACATED
- - - - - SECTION LINE
- - - - - MID-SECTION LINE
- - - - - SIXTEENTH SECTION LINE
- 2.5" ALUMINUM CAP STAMPED PELS 8663
- ⊙ BRASS CAP STAMPED LS 2335
- 1.5" ALUMINUM CAP STAMPED PELS 2085
- ⊕ PREVIOUSLY ACCEPTED STONE CORNER
- ⊕ FOUND STONE CORNER, PERPETUATED WITH 2.5" ALUMINUM CAP, PELS 8663

CERTIFICATE OF SURVEY
FOR THE RIGHT-OF-WAY
OF
COUNTY ROAD 43, MUDDY CREEK ROAD
LOCATED IN PARTS OF
SECTIONS 28, 32, AND 33 OF T.49 N., R.82 W.,
OF THE 6TH PRINCIPAL MERIDIAN,
JOHNSON COUNTY, WY

Bighorn Surveying & Engineering, LLC
401 First Street, Suite 4
Buffalo, WY 82834
(307) 684-7400
www.bighornsurveying.com

Prepared For:
Johnson County Road and Bridge Department
310 Railroad Avenue
Buffalo, WY 82834

Muddy Creek County Road #43
Also Being County Road Survey #43

RIGHT-OF-WAY

Certificate of Survey for Right of Way of County Road #43 Muddy Creek Road

SCALE: 1"=200'

PROJECT NO.: 13-37
DRAWING: 13-37 CR43 Muddy Creek
LAYOUT: 1 of 1

DRAWN BY: MB
CHECKED BY: JJ
APPROVED BY: JJ
DATE: 10/31/2013
REVISIONS:

STATE OF WYOMING }
COUNTY OF JOHNSON } SS
This instrument was Filed for record on 4/1/2014 at 4:28 PM
and was duly recorded in Book: H-FILE page: 413 - 413 fees: 0.00
By: *Wick Edelman* Johnson County Clerk
Deputy