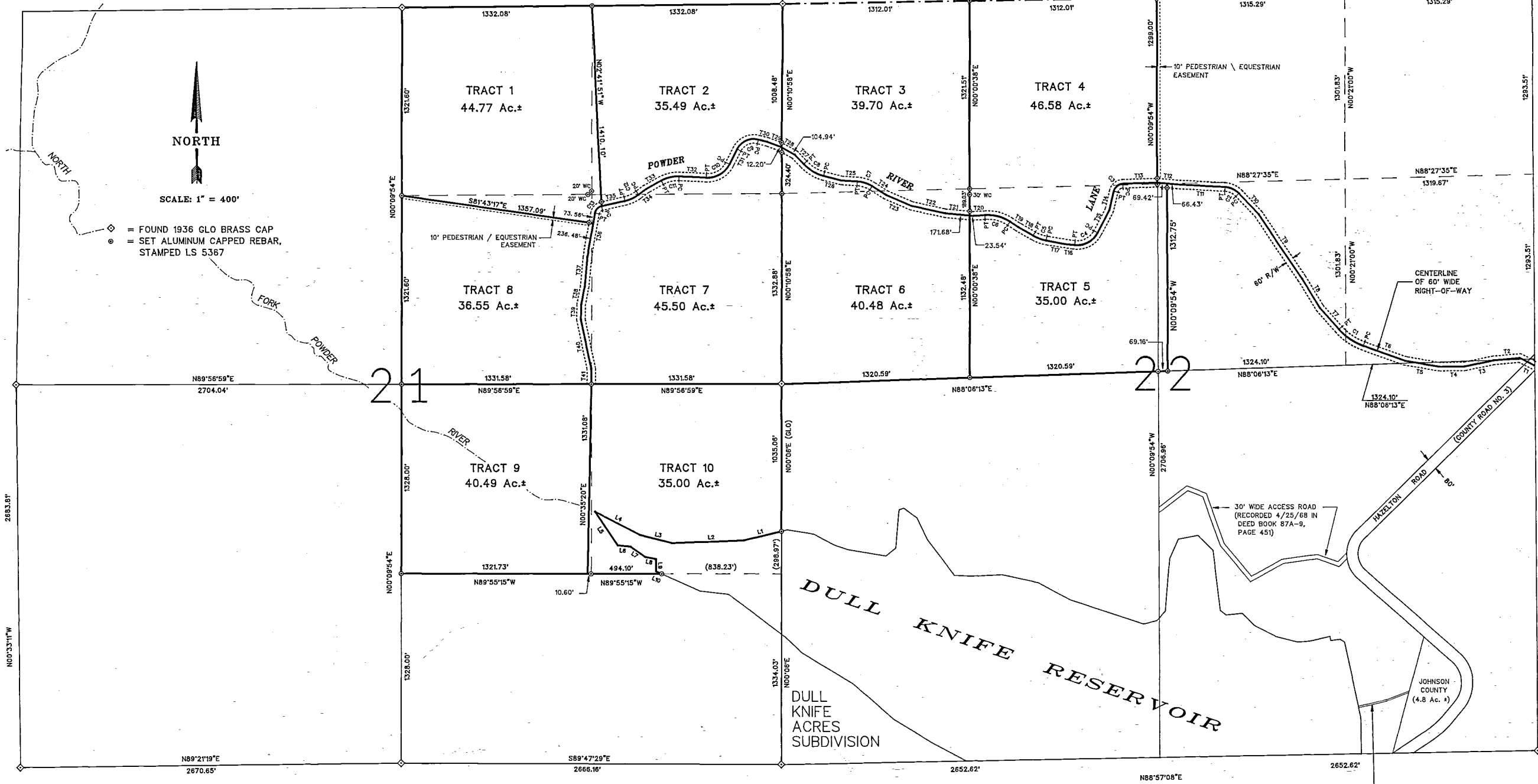


BIGHORN NATIONAL FOREST

60' WIDE RIGHT-OF-WAY CENTERLINE DATA

RANGE 85 WEST

HOWSHORN



TANGENT DESCRIPTION	BEARING	DISTANCE
TIE: SE COR. SEC. 22 TO CENTERLINE HAZELTON ROAD (POINT OF BEGINNING)	N00°31'43"W	2701.84'
T1	N62°31'17"W	110.15'
T2	S84°54'34"W	185.94'
T3	S78°00'48"W	205.48'
T4	S89°18'32"W	176.35'
T5	N80°26'19"W	244.22'
T6	N70°22'44"W	312.04'
T7	N41°38'41"W	200.31'
T8	N31°27'11"W	240.57'
T9	N34°06'25"W	542.84'
T10	N43°03'11"W	201.32'
T11	N86°56'09"W	339.24'
T12	N84°49'12"W	135.85'
T13	S88°02'41"W	241.31'
T14	S13°32'10"W	138.52'
T15	S27°31'30"W	177.58'
T16	N84°37'36"W	73.16'
T17	N78°47'02"W	131.08'
T18	N60°39'34"W	121.05'
T19	N56°30'46"W	69.40'
T20	S85°42'43"W	81.80'
T21	N84°28'53"W	195.22'
T22	N77°36'52"W	244.46'
T23	N66°24'36"W	193.00'
T24	N57°24'49"W	115.78'
T25	N86°26'50"W	111.08'
T26	N75°28'37"W	128.96'
T27	N43°16'08"W	90.57'
T28	N60°42'27"W	117.14'
T29	N69°29'14"W	95.10'
T30	N75°49'09"W	63.55'
T31	S27°24'12"W	119.81'
T32	N87°25'39"W	191.24'
T33	S61°04'14"W	120.77'
T34	S53°01'09"W	66.62'
T35	S77°24'53"W	166.92'
T36	S10°03'35"W	310.04'
T37	S05°35'29"W	212.34'
T38	S11°14'00"W	125.79'
T39	S01°07'53"W	104.44'
T40	S12°11'47"E	349.04'
T41	S00°10'26"W	111.90'
SE COR. SW1/4NE1/4 SECTION 22 (POINT OF ENDING)		

CURVE	DELTA	RADIUS	LENGTH
C1	28°44'03"	417.30'	209.28'
C2	43°52'58"	144.07'	110.34'
C3	74°31'31"	68.25'	88.77'
C4	67°50'54"	161.00'	190.65'
C5	18°07'28"	308.55'	97.60'
C6	37°46'31"	283.00'	186.58'
C7	29°02'01"	212.25'	107.55'
C8	32°12'29"	293.81'	165.16'
C9	76°46'39"	132.04'	176.94'
C10	65°10'09"	174.00'	197.91'
C11	31°30'07"	236.32'	129.93'
C12	24°23'44"	251.11'	106.92'
C13	67°21'18"	60.50'	71.12'



SCALE: 1" = 400'

- ◊ = FOUND 1936 GLO BRASS CAP
- = SET ALUMINUM CAPPED REBAR, STAMPED LS 5367

BOUNDARY OF DULL KNIFE RESERVOIR SHOWN ON THIS PLAT IS AS RECORDED ON JUNE 30, 1965, IN DEED BOOK 87A-7, PAGES 400-402, IN THE OFFICE OF THE CLERK OF JOHNSON COUNTY, WYOMING.

MEANDER LINE TWO FEET IN ELEVATION ABOVE THE HIGH WATER LINE (RECORD)

L1	S76°30' W	273'
L2	S87°55' W	502'
L3	N75°46' W	230'
L4	N62°19' W	355'
L5	S33°40' E	285'
L6	S84°13' E	89'
L7	S54°44' E	122'
L8	S78°11' E	80'
L9	S01°45' E	87'
L10	S65°45' E	42.3'

Ten (10) foot wide Pedestrian / Equestrian Easements shown on this plat were filed for record on November 14, 1996 in Book #13 R/W, pages 543-545, in the office of the Clerk of Johnson County, Wyoming.

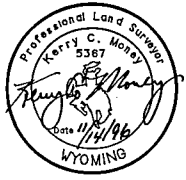
The sixty (60) foot wide Right-of-Way shown on this plat was filed for record on November 14, 1996 in Book #13 R/W, pages 546-551, in the Office of the Clerk of Johnson County, Wyoming.

Declaration of Covenants, Conditions and Restrictions for Powder River Properties for record on November 14, 1996 in Book #86A46, pages 104-113, in the Office of the Clerk of Johnson County, Wyoming.

CERTIFICATE OF SURVEYOR

STATE OF WYOMING)
COUNTY OF JOHNSON)

I, Kerry C. Money, a duly registered Land Surveyor in the State of Wyoming, do hereby certify that this certificate was prepared from notes taken by me during an actual field survey in July - December, 1993, and that it correctly represents the conditions as found on the ground.



STATE OF WYOMING)
COUNTY OF JOHNSON)

This instrument was filed for record on the 14th day of November, 1996, at 4:55, and was duly recorded in Plat Book 2, page 149.

Fee: \$ 50.00

Saverly Plante
Register of Deeds

By: Deputy

"POWDER RIVER PROPERTIES"

Prepared for:
CAMINO RANCH LIMITED PARTNERSHIP
29259 OLD HWY 87
BUFFALO, WY 82834



P.O. BOX 1004
BUFFALO, WYOMING 82834

307/684-7029
Date Drawn: 11/14/96
Scale: NONE
Drawn By: KcM/TSR
Checked By: KcM
Project No: 96-94
File Name: CAMINORD3.GCD