

CERTIFICATE

WE, A.L.REA & IDA LEE REA HEREBY CERTIFY THAT WE ARE THE OWNERS & PROPRIETORS OF THE REA ADDITION TO THE CITY OF BUFFALO, WYOMING AS IT APPEARS ON THIS PLAT AND IS DESCRIBED AS FOLLOWS: COMMENCING AT THE SOUTH-EAST CORNER OF LOT SIX, BLOCK ONE, RIVERSIDE ADDITION TO THE CITY OF BUFFALO, THENCE DUE EAST 255.4 FEET, THENCE NORTH A DISTANCE OF APPROXIMATELY 182 FEET TO THE SOUTH BANK OF CLEAR CREEK, THENCE IN A SOUTHWEST-ERLY DIRECTION ALONG THE SOUTH BANK OF CLEAR CREEK APPROXIMATELY 265 FEET TO A POINT ON THE EAST LINE OF LOT 6, BLOCK 1, OF SAID RIVERSIDE ADDITION, THENCE DUE SOUTH ALONG THE EAST LINE OF SAID LOT 6 TO THE POINT OF BE-GINNING, CONTAINING APPROXIMATELY ONE ACRE IN THE NE 1/4 NW 1/4, SECTION 35, T51N R82W.

*A.L. Rea*  
A.L. REA

*Ida Lee Rea*  
IDA LEE REA

SUBSCRIBED AND SWORN TO BEFORE ME THIS 1<sup>st</sup> DAY OF AUGUST, 1961.

*Robert A. Liles*  
NOTARY PUBLIC

MY COMMISSION EXPIRES January 24, 1964

APPROVED:-  
CITY COUNCIL OF THE CITY OF BUFFALO, WYOMING BY ORDINANCE NO. 604 DULY PASSED, ADOPTED AND APPROVED ON THE 2 DAY OF August, 1961.

*Prof. J. S. ...*  
MAYOR

ATTEST: *Paul Kastenbach*  
CITY CLERK

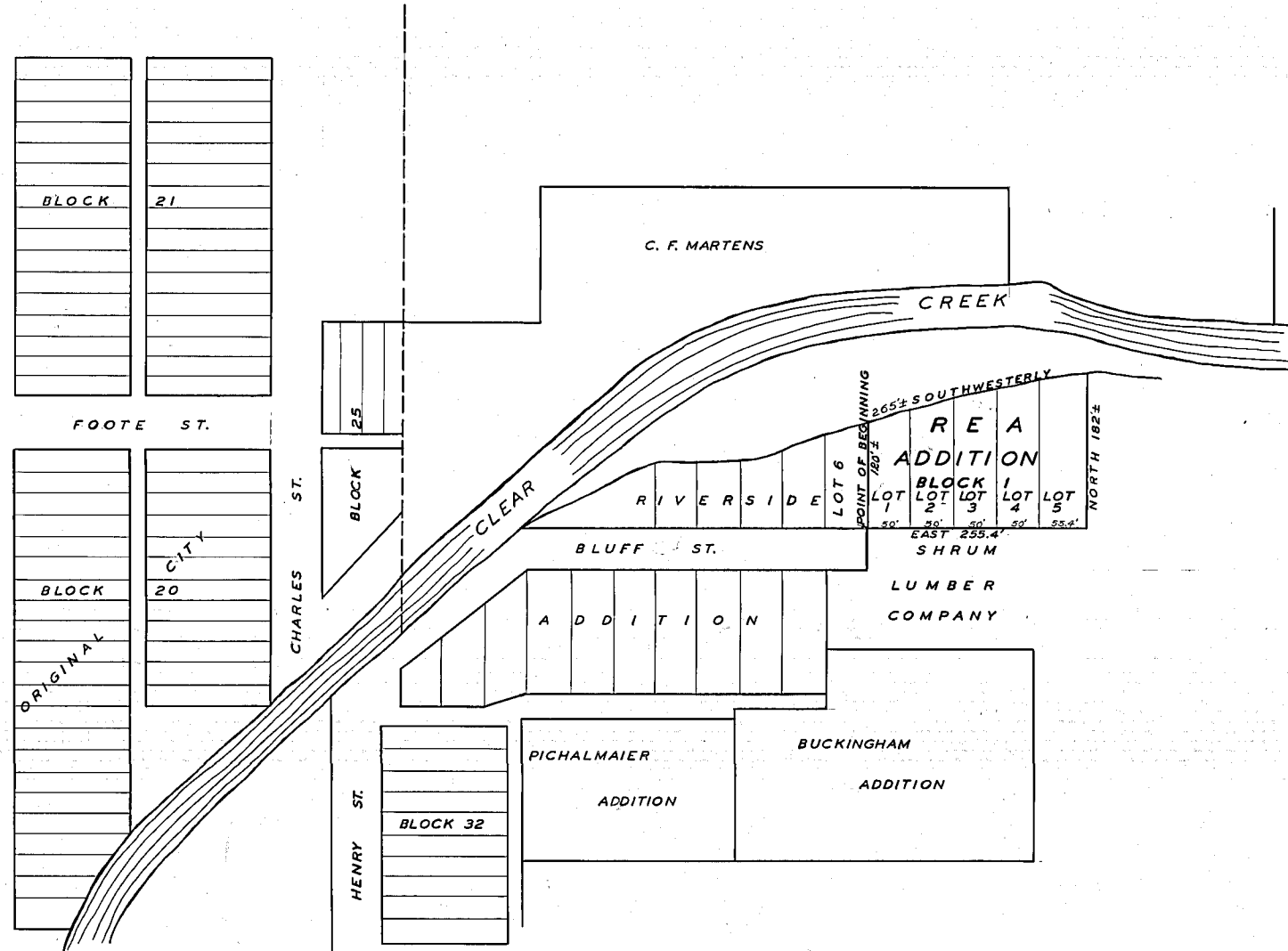
DATED August 2, 1961

APPROVED:-  
BOARD OF COUNTY COMMISSIONERS OF JOHNSON COUNTY, WYOMING BY RESOLUTION DULY PASSED ON THE 5 DAY OF Sept, 1961.

*Joe D. Hall*  
CHAIRMAN OF THE BOARD

ATTEST: *W. Palmer*  
COUNTY CLERK

DATED 9-5-1961



CERTIFICATE OF SURVEYOR  
STATE OF WYOMING  
COUNTY OF JOHNSON  
I, LEE D. MOFFETT OF BUFFALO, WYOMING, HEREBY CERTIFY THAT THIS MAP WAS MADE BY ME ON JULY 29, 1961, FROM RECORDS AND MAPS ON FILE IN THE OFFICE OF THE COUNTY CLERK OF JOHNSON COUNTY, WYO.

REG. NO. 229

*Lee D. Moffett*  
SURVEYOR

STATE OF WYOMING }  
COUNTY OF JOHNSON } ss. 95151  
This instrument was filed for record on .....19...  
at ..... M., and was duly recorded in Book ..... page  
Fee \$ .....  
By *W. Palmer* Register of Deeds.  
Deputy

REA ADDITION

TO THE CITY OF BUFFALO, WYOMING

SCALE 1"=100'