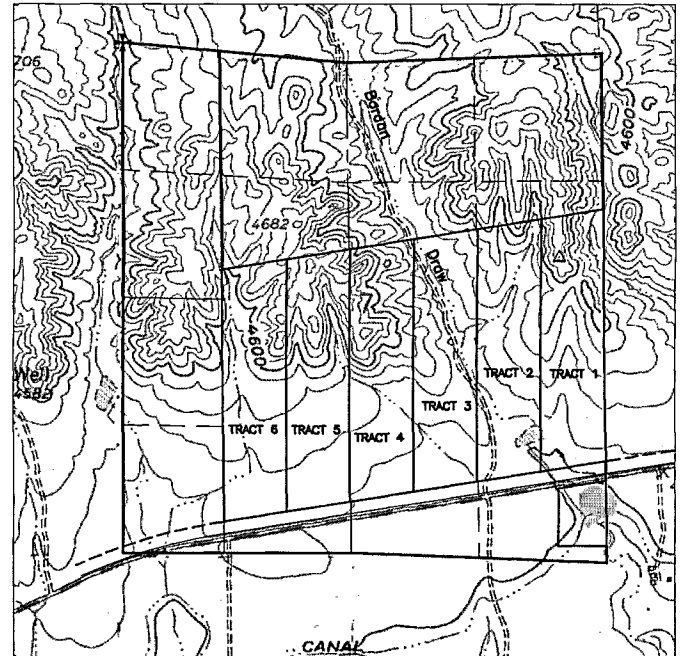
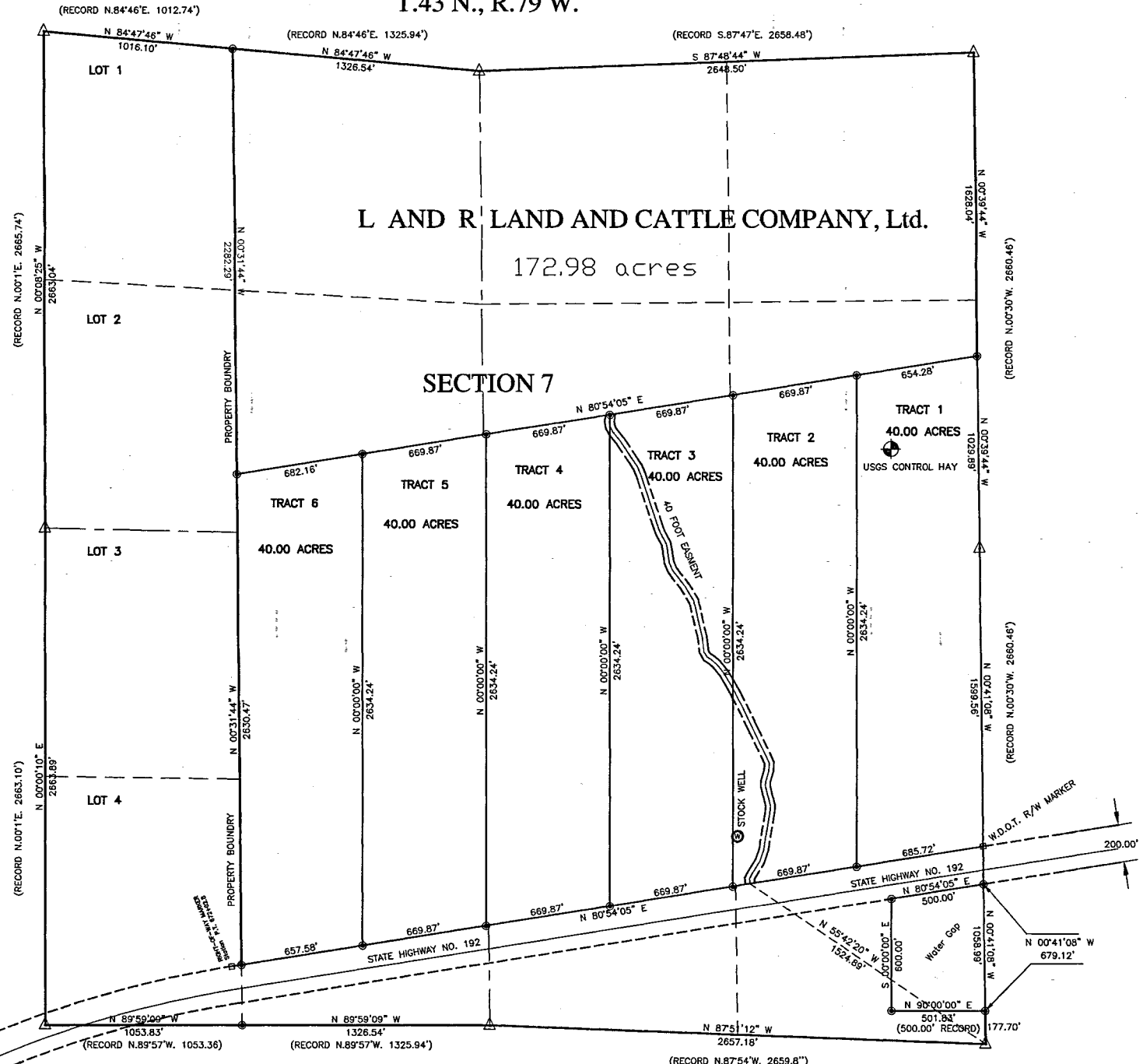


T.43 N., R.79 W.

LAND DESCRIPTIONS



TRACT 1
Beginning at a point on the east line of Section 7, T.43 N., R.79 W. bearing N.0 41'08"W. a distance of 1058.99 feet said point being on the north right-of-way line of State Highway No. 192; Thence N.00-41-08 W. along said section line a distance of 1599.65 feet; Thence N.00-39-44 W. along said section line a distance of 1029.89 feet; Thence S.80-54-05 W. a distance of 654.28 feet; Thence S.00-00-00 W. a distance of 2634.24 feet to a point on the north right-of-way line of State Highway No. 192; Thence N.80-54-05 E. along said North right of way line a distance of 685.72 feet to the point of beginning.

TRACT 2
Beginning a point on the north right-of-way line of State Highway No. 192 bearing N.00-41-08 W a distance of 1058.99 feet and S.80-54-05 W a distance of 685.72 feet from the southeast corner of Section 7, T.43 N., R.79 W.; Thence N.00-00-00 E a distance of 2634.24 feet; Thence S.80-54-05 W a distance of 669.87 feet; Thence S.00-00-00 W a distance of 2634.24 feet to a point on the north right-of-way line of State Highway No. 192; Thence N.80-54-05 E a distance of 669.87 feet to the point of beginning.

TRACT 3
Beginning a point on the north right-of-way line of State Highway No. 192 bearing N.00-41-08 W a distance of 1059.99 feet and S.80-54-05 W a distance of 1355.59 feet from the southeast corner of Section 7, T.43 N., R.79 W.; Thence N.00-00-00 E a distance of 2634.24 feet; Thence S.80-54-05 W a distance of 669.87 feet; Thence S.00-00-00 W a distance of 2634.24 feet to a point on the north right-of-way line of State Highway No. 192; Thence N.80-54-05 E a distance of 669.87 feet to the point of beginning.

TRACT 4
Beginning a point on the north right-of-way line of State Highway No. 192 bearing N.00-41-08 W a distance of 1059.99 feet and S.80-54-05 W a distance of 2025.46 feet from the southeast corner of Section 7, T.43 N., R.79 W.; Thence N.00-00-00 E a distance of 2634.24 feet; Thence S.80-54-05 W a distance of 669.87 feet; Thence S.00-00-00 W a distance of 2634.24 feet to a point on the north right-of-way line of State Highway No. 192; Thence N.80-54-05 E a distance of 669.87 feet to the point of beginning.

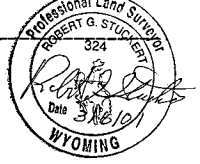
TRACT 5
Beginning a point on the north right-of-way line of State Highway No. 192 bearing N.00-41-08 W a distance of 1059.99 feet and S.80-54-05 W a distance of 2695.33 feet from the southeast corner of Section 7, T.43 N., R.79 W.; Thence N.00-00-00 E a distance of 2634.24 feet; Thence S.80-54-05 W a distance of 669.87 feet; Thence S.00-00-00 W a distance of 2634.24 feet to a point on the north right-of-way line of State Highway No. 192; Thence N.80-54-05 E a distance of 669.87 feet to the point of beginning.

TRACT 6
Beginning a point on the north right-of-way line of State Highway No. 192 bearing N.00-41-08 W a distance of 1059.99 feet and S.80-54-05 W a distance of 3365.20 feet from the southeast corner of Section 7, T.43 N., R.79 W.; Thence N.00-00-00 E a distance of 2634.24 feet; Thence S.80-54-05 W a distance of 682.16 feet to a point on the east line of Lot 2; Thence S.00-31-44 W along the east line of lots 2, 3 and 4 distance of 2630.47 feet to a point on the north right-of-way line of State Highway No. 192; Thence N.80-54-05 E a distance of 657.58 feet to the point of beginning.

ACCESS ROAD EASEMENT
The following described easement is hereby reserved for L AND R LAND AND CATTLE COMPANY, Ltd, its heirs, successors or assigns the right of access for ingress and egress and the installation of utilities along the easement as shown here on.
An easement forty (40.00') in width being twenty feet (20.00') on either side of the following described center line:
Beginning at a point being on the north right-of-way line of State Highway No. 192 and the beginning of an existing two track road bearing N.55°42'20"W. a distance of 1524.89 feet;
Thence N.05-50-42'W. a distance of 28.85 feet;
Thence N.29-29-32'E. a distance of 34.06 feet;
Thence N.31-17-32'E. a distance of 75.22 feet;
Thence N.18-04-07'E. a distance of 60.69 feet;
Thence N.09-20-23'E. a distance of 203.69 feet;
Thence N.04-31-49'E. a distance of 34.34 feet;
Thence N.13-07-21'W. a distance of 49.41 feet;
Thence N.14-27-34'W. a distance of 61.86 feet;
Thence N.03-19-57'E. a distance of 25.45 feet;
Thence N.16-30-28'E. a distance of 55.66 feet;
Thence N.03-44-51'E. a distance of 24.84 feet;
Thence N.02-37-32'E. a distance of 20.25 feet;
Thence N.25-16-01'W. a distance of 204.80 feet;
Thence N.25-59-42'W. a distance of 209.67 feet;
Thence N.29-05-48'W. a distance of 65.21 feet;
Thence N.31-37-48'W. a distance of 61.86 feet;
Thence N.38-46-35'W. a distance of 62.99 feet;
Thence N.49-34-16'W. a distance of 30.73 feet;
Thence N.56-38-10'W. a distance of 31.76 feet;
Thence N.29-29-57'W. a distance of 31.41 feet;
Thence N.06-28-32'W. a distance of 73.75 feet;
Thence N.13-11-50'W. a distance of 202.65 feet;
Thence N.31-13-40'W. a distance of 93.96 feet;
Thence N.38-22-01'W. a distance of 87.46 feet;
Thence N.34-48-58'W. a distance of 29.13 feet;
Thence N.22-22-37'W. a distance of 38.18 feet;
Thence N.07-00-33'W. a distance of 65.75 feet;
Thence N.11-34-09'W. a distance of 34.04 feet;
Thence N.29-04-34'W. a distance of 57.59 feet;
Thence N.21-01-46'W. a distance of 34.89 feet;
Thence N.18-19-00'W. a distance of 296.69 feet;
Thence N.22-51-38'W. a distance of 53.16 feet;
Thence N.34-17-01'W. a distance of 29.75 feet;
Thence N.34-03-04'W. a distance of 136.25 feet;
Thence N.39-12-23'W. a distance of 58.56 feet;
Thence N.29-13-48'W. a distance of 31.72 feet;
Thence N.08-37-22'W. a distance of 32.57 feet;
Thence N.08-03-58'E. a distance of 36.22 feet to a point on the north line of the above platted Tracts of land;

CERTIFICATE OF SURVEY

STATE OF WYOMING
COUNTY OF JOHNSON
I, Robert G. Stuckert a duly registered land surveyor in the State of Wyoming, do hereby certify that this plat of the 40 acre tracts of land and Section 7 and truly and correctly represents the results of a survey made by me on the 27th of January, 2001.



Registered Land Surveyor

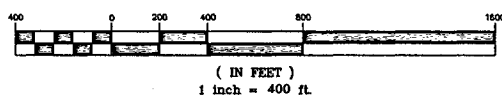
STATE OF WYOMING) ss US9777
COUNTY OF JOHNSON)
I hereby certify that the above plat was filed for record on the 6th day of March 2001 at 9:00 A.M. and was duly recorded in Book # 2 Page 198
Protective Covenants are recorded in Book _____, Page _____
COVENANTS FILED IN BOOK _____ PAGE _____

- LEGEND**
- △ FOUND B.L.M. BRASS CAP CORNERS
 - SET 30" X 5/8" REBAR WITH 2" CAPS



SCALE: 1" = 400'

GRAPHIC SCALE



DRAWN BY:	RGS	DATE:	1/29/2001
CHECKED BY:	RGS	DRAWING NO.:	1
JOB NO.:	1272001	SHEET	1 OF 1

RECORD OF SURVEY
OF
SECTION 7, T.43 N., R.79 W.
FOR
L AND R LAND AND CATTLE COMPANY, Ltd.
JANUARY 27, 2001