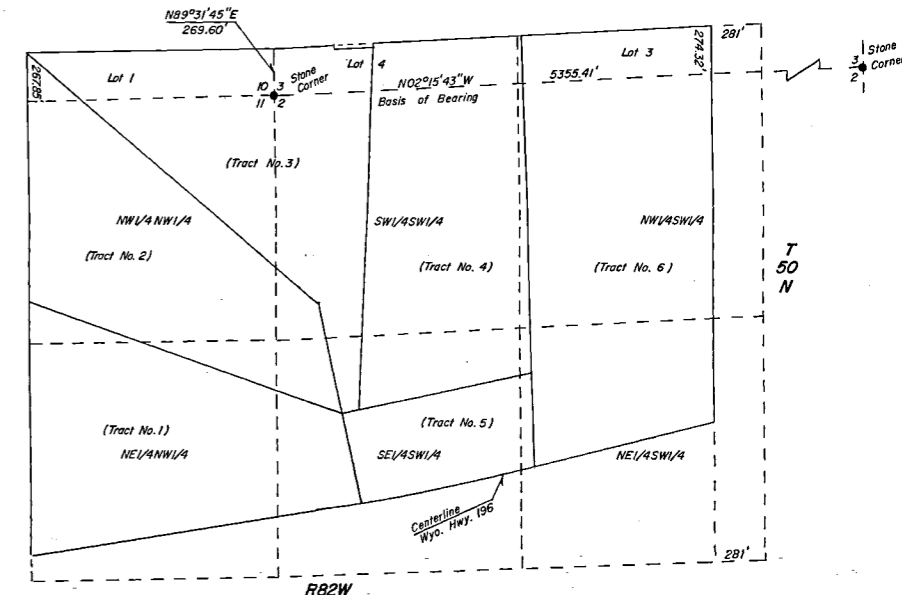


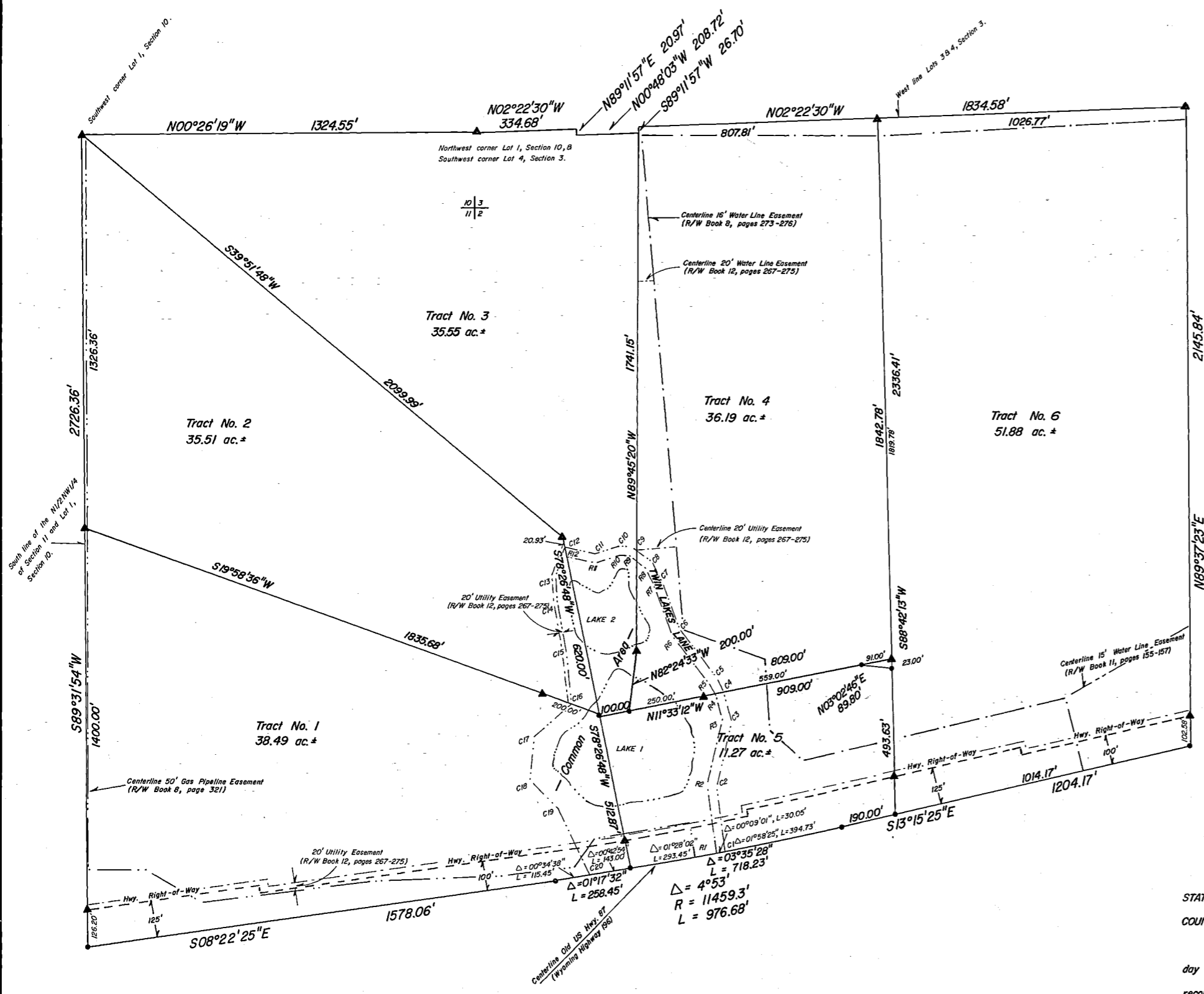
SCALE: 1" = 200'

**LEGEND**

- ▲ ALUMINUM CAPPED REBAR STAMPED P.E.B.S 2085
- APPROXIMATE WATER LINE
- - - COMMON AREA BOUNDARY
- - - CENTERLINE 60' ACCESS EASEMENT



Vicinity Map  
nts



**COMMON AREA BOUNDARY**

C1-C2	S82°27'17"W	235.02'
C2-C3	N77°09'59"W	219.02'
C3-C4	S77°34'31"W	89.43'
C4-C5	S63°27'46"W	72.12'
C5-C6	S52°16'43"W	195.70'
C6-C7	S70°50'31"W	178.42'
C7-C8	S64°35'25"W	70.04'
C8-C9	S40°53'00"W	102.14'
C9-C10	S03°04'48"W	45.55'
C10-C11	S26°48'20"E	81.90'
C11-C12	S07°51'03"W	104.18'
C12-C13	S72°01'00"E	88.73'
C13-C14	N86°41'59"E	77.55'
C14-C15	N79°59'23"E	185.56'
C15-C16	N84°10'18"E	176.76'
C16-C17	S40°21'56"E	169.40'
C17-C18	S84°39'43"E	144.75'
C18-C19	N49°13'48"E	138.07'
C19-C20	N65°24'36"E	253.97'

(R/W Book 12, pages 267-275)

**CENTERLINE 60' ACCESS AND UTILITY EASEMENT**

R1-R2	S82°27'17"W	242.33'
R2-R3	N77°09'59"W	217.69'
R3-R4	S77°34'31"W	78.00'
R4-R5	S63°27'46"W	65.47'
R5-R6	S52°16'43"W	197.65'
R6-R7	S70°50'31"W	181.69'
R7-R8	S64°35'25"W	72.10'
R8-R9	S40°53'00"W	71.23'
R9-R10	S03°04'48"W	33.83'
R10-R11	S26°48'20"E	83.25'
R11-R12	S07°51'03"W	102.97'

(R/W Book 12, pages 267-275)

**CERTIFICATE OF SURVEYOR**

STATE OF WYOMING )  
 )ss  
 COUNTY OF JOHNSON )  
 I, Keith A. Neustel, a duly Registered Land Surveyor in the State of Wyoming, do hereby certify that this plat of "Twin Lakes Estates" truly and correctly represents the results of a survey made by me in April and May, 1994.



STATE OF WYOMING )  
 )ss  
 COUNTY OF JOHNSON )  
 This instrument was filed for record on the 1st day of March, 1995, at 10:30 AM, and was duly recorded in Plat Book 2, page 127.

Fee: \$50.00

*[Signature]*  
 Registrar of Deeds

Protective Covenants are recorded in Book 86A43, pages 482-517 (For Tracts 1 through 5)

Certificate of Survey  
 "TWIN LAKES"  
 Buffalo, Wyoming

Prepared for:  
 Twin Lakes, L.C.  
 95 Kumor Road  
 Buffalo, WY. 82834

**GRIZZLY ENGINEERING**  
 CONSULTING ENGINEERS and LAND SURVEYORS  
 P.O. BOX 1004  
 BUFFALO, WYOMING 82834  
 307/684-7029

Date drawn: 5/7/94  
 Scale: 1" = 200'  
 Drawn by: KAN  
 Checked by:  
 Project No. 94-28