

A BOUNDARY LINE ADJUSTMENT
FOR
LOTS 1I & 1K
OF THE
GREENLEAF ESTATES ADDITION, PHASE III
BEING A RESUBDIVISION OF
LOTS 1I, J, & 1K, BLOCK 5 GREENLEAF ESTATES ADDITION,
PHASE III
TO THE CITY OF BUFFALO WY

CERTIFICATE OF DEDICATION

THE ABOVE OR PENDING BOUNDARY LINE ADJUSTMENT OF LOTS 1I, AND 1K, BLOCK 5, OF THE GREENLEAF ESTATES ADDITION, PHASE III, BEING A RESUBDIVISION OF LOTS 1I, J, & 1K, BLOCK 5, OF THE GREENLEAF ESTATES ADDITION, PHASE III, IS WITH THE FREE CONSENT AND IN ACCORDANCE WITH THE DESIRES OF THE OWNERS AND PROPRIETORS, CONTAINING 0.45 ACRES MORE OR LESS, HAVE BY THESE PRESENTS, LAID OUT AND SURVEYED AS LOTS 1I AND THE NORTH HALF OF 1I AND 1K AND THE SOUTH HALF OF 1I, BLOCK 5 OF THE GREENLEAF ESTATES ADDITION PHASE III TO THE CITY OF BUFFALO, WYOMING, AND DO HEREBY RESERVE PERPETUAL EASEMENTS AS SHOWN LAND 1017 AND DESIGNATED ON THIS PLAT. SAID LOTS ARE FURTHER DESCRIBED AS:

LOT 1I AND THE N/2 OF LOT 1I

A parcel of land consisting of Lot 1I and the north half of Lot 1I, Block 5, of the Greenleaf Estates Addition, Phase III, Buffalo, Wyoming. Said south half being more particularly described as follows:

Beginning at the northeast corner of said Lot 1I, as monumented by a 2" aluminum cap stamped PELS 2085;

Thence along the east line of said Lot 1I S89°39'04" E, a distance of 251.53 feet to a 2" aluminum cap stamped PELS 13351;

Thence S89°54'00" W, a distance of 112.21 feet to a 2" aluminum cap stamped PELS 13351 set on the west line of said Lot 1I;

Thence along said west line on a curve to the left with a radius of 25.55 feet, an arc length of 26.88 feet, a central angle of 27°58' to the south west corner of said Lot 1I, as monumented by a 2" aluminum cap stamped PELS 2085;

Thence N89°57'36" E, a distance of 110.59 feet to the point of beginning.

Said south 1/2 of Lot 1I contains 2849 square feet, more or less. Said parcel consisting of Lot 1I and the north half of 1I contains 9939 square feet, more or less.

LOT 1K AND THE S/2 OF LOT 1I

A parcel of land consisting of Lot 1K and the south half of Lot 1I, Block 5, of the Greenleaf Estates Addition, Phase III, Buffalo, Wyoming. Said south half being more particularly described as follows:

Beginning at the northeast corner of said Lot 1I, as monumented by a 2" aluminum cap stamped PELS 2085;

Thence along the east line of said Lot 1I N80°39'04" W, a distance of 251.53 feet to a 2" aluminum cap stamped PELS 13351;

Thence S89°54'00" W, a distance of 112.21 feet to a 2" aluminum cap stamped PELS 13351 set on the west line of said Lot 1I;

Thence along said west line on a curve to the right with a radius of 60.00 feet, an arc length of 27.88 feet, a central angle of 27°58' to the south west corner of said Lot 1I, as monumented by a 2" aluminum cap stamped PELS 2085;

Thence N89°54'00" E, a distance of 125.53 feet to the point of beginning.

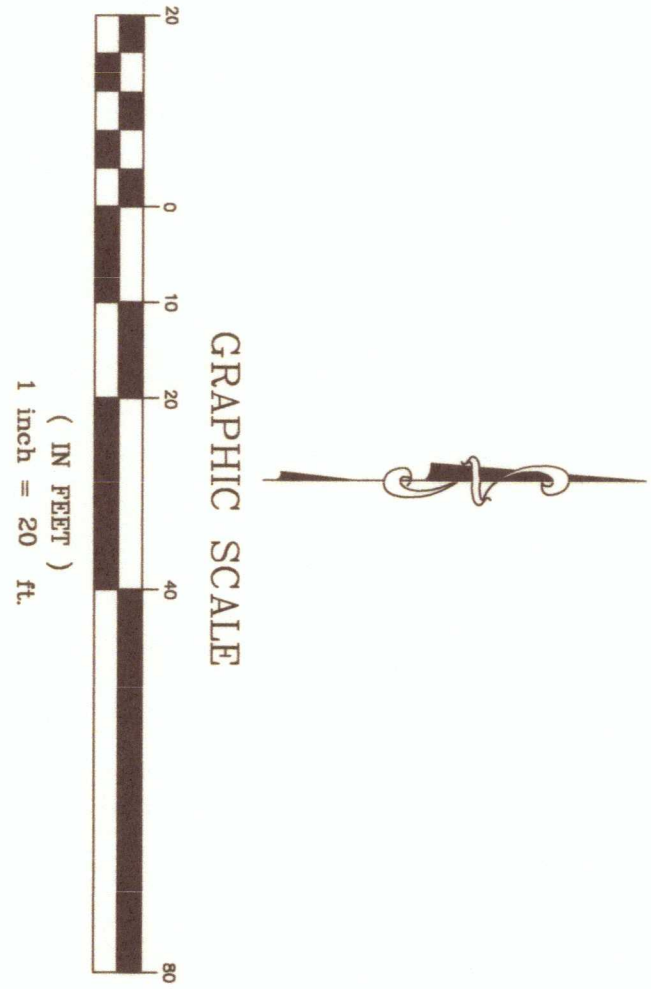
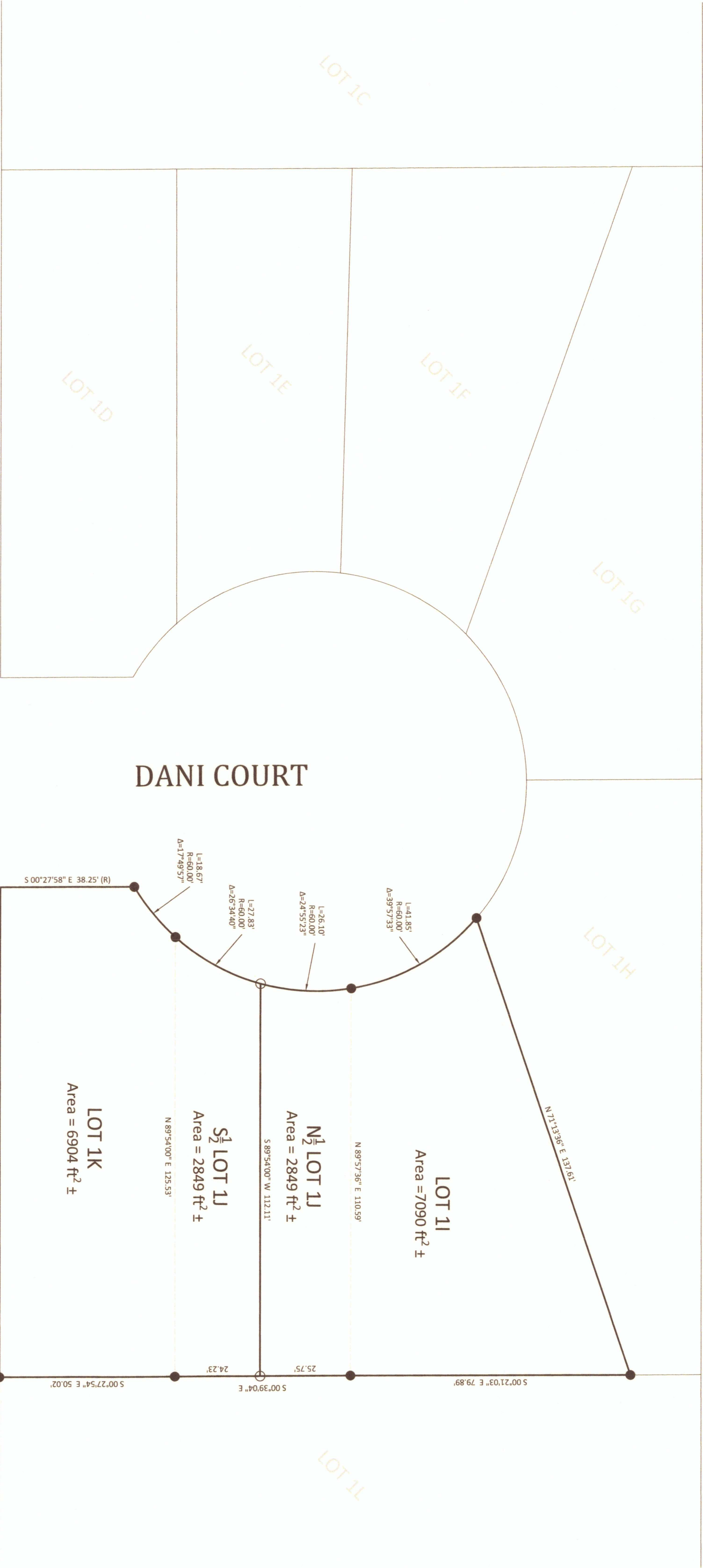
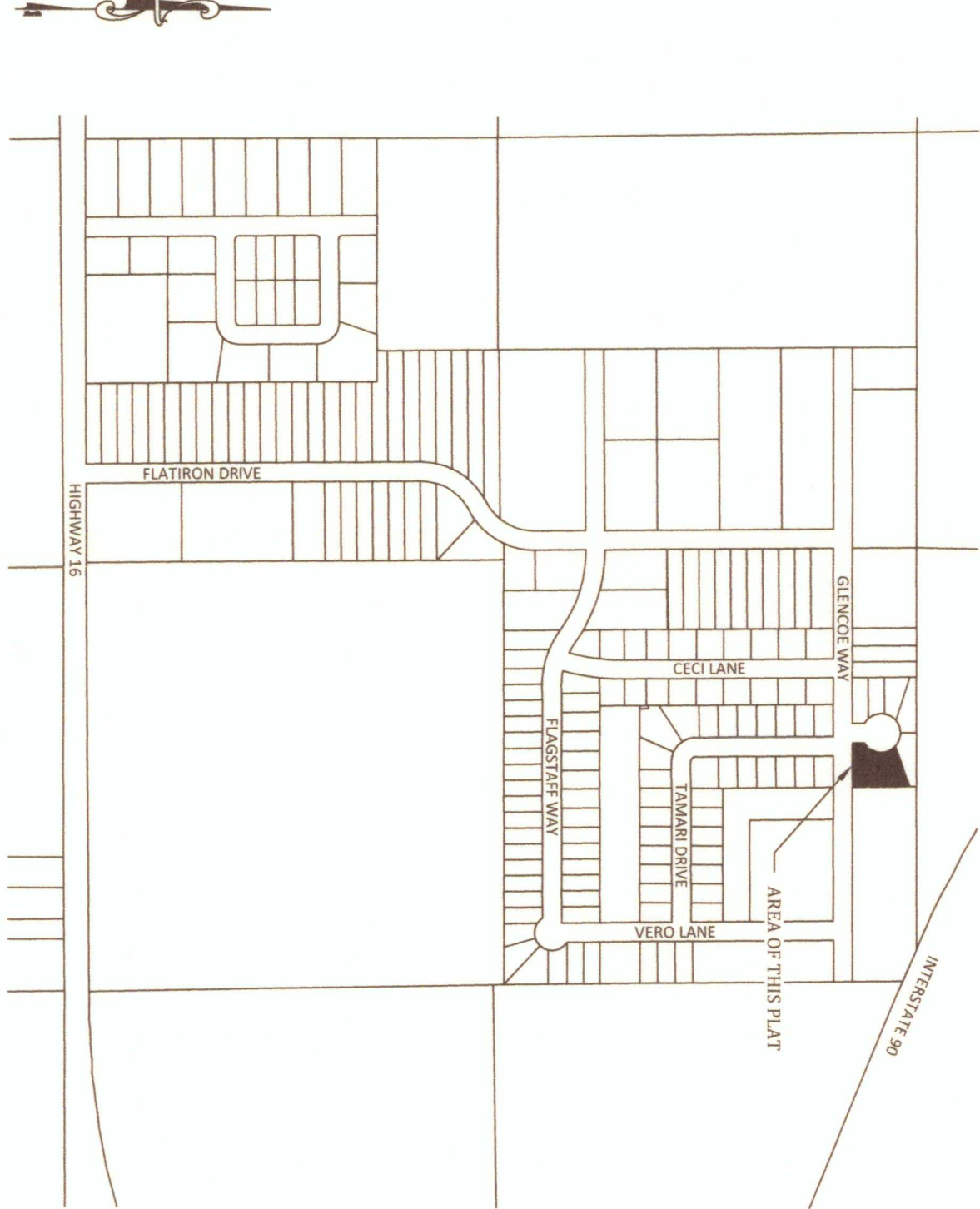
Said south 1/2 of Lot 1I contains 2849 square feet, more or less. Said parcel consisting of Lot 1K and the south half of 1I contains 9753 square feet, more or less.

FLV
Horizon Management, LLC by
Felipe Velasquez, Managing Member
STATE OF WYOMING }
COUNTY OF JOHNSON }

The Forgoing Instrument was Acknowledged before me this 17th day of April, 2018
by Felipe Velasquez in his capacity as Managing Member for Horizon Management, LLC.
Witness my hand and official seal:



Paul D. Clements
Notary Public



CERTIFICATE OF SURVEYOR

STATE OF WYOMING }
COUNTY OF JOHNSON } SS

LEGEND

- - FOUND ALUMINUM CAP STAMPED PELS 2085
- - SET ALUMINUM CAP STAMPED PELS 13351
- ESTABLISHED BOUNDARY
- VACATED BOUNDARY

INCORPORATED CITY APPROVAL

APPROVED BY THE CITY OF BUFFALO ON THIS 21st DAY OF April, 2018.

Julie Silbernagel
ATTEST JULIE SILBERNAGEL, CITY CLERK

Toby Rhoades
TOBY RHOADES, CITY PLANNER

CERTIFICATE OF RECORDER

STATE OF WYOMING } SS
COUNTY OF JOHNSON }
This instrument was recorded on 4/27/2018 at 10:44 AM
and was duly recorded in Book H-21E, Page 483 - 485
Johnston County Clerk
By *Debra Carr*, Deputy

GREENLEAF ESTATES PHASE III
BOUNDARY LINE ADJUSTMENT
LOTS 1I, 1J, AND 1K, BLOCK 5

Prepared For:
Horizon Management, LLC
PO BOX 192
Buffalo, WY 82834

Bighorn
Surveying &
Engineering, LLC
401 Fort Street Suite 4 Buffalo, WY 82834 (307) 684-7400 www.bighornsurveying.com

DRAWN BY: MB
CHECKED BY: JL
PROJECT NO.: 18-11
DWG: BAUER-TRIUNILLO
DATE: 4/16/18
REVISION: _____
PAGE: 1
1