

BUFFALO PARK ADDITION

The above or foregoing subdivision of the following described land or realstate to wit:

Beginning at the southeast corner of the Mountain Drive Addition to the City of Buffalo Wyoming; thence N. 0°23'25" W. a distance of 200.93 feet; thence S. 89°56'55" E. a distance of 1220.39 feet to the southwest corner of Block 24 of the Park Addition to the City of Buffalo, Wyoming; thence S. 0°41'5" E. along the west line of said Park Addition a distance of 1194.32 feet to the north right way line of County Road No. 256; thence S. 47°36'01" W. along said north right-of-way line a distance of 781.4 feet; thence S. 52°45'34" W. along said north right-of-way line a distance of 209.83 feet; thence S. 53°17'28" W. along said right-of-way line a distance of 106.76 feet to the beginning of a 1°29'04" curve to the left; thence along said curve through a central angle of 8°16'46" a distance of 557.75 feet; thence S. 45°00'41" W. along said right-of-way line a distance of 146.06 feet to the beginning of a 3°24'59" curve to the left; thence along said curve through a central angle of 13°50'24" a distance of 405.08 feet; thence S. 31°10'17" W. along said north right-of-way line a distance of 688.28 feet to the beginning of a 1°30'57" curve to the right; thence along said curve through a central angle of 3°03'02" a distance of 201.23 feet; thence S. 34°13'19" W. along said right-of-way line a distance of 304.41 feet to the beginning of a 0°59'35" curve to the left; thence along said curve through a central angle of 0°55'34" a distance of 93.25 feet; thence S. 33°17'45" W. along said north right-of-way line a distance of 560.37 feet to the beginning of a 5°17'48" curve to the left; thence along said curve through a central angle of 10°47'17" a distance of 203.68 feet to a point on the north line of Parcel B T.50 & 51 N., R.82 W.; thence S. 72°12'52" W. a distance of 289.68 feet; thence S. 29°22'01" W. a distance of 157.08 feet; thence S. 0°13'41" E. a distance of 552.67 feet to a point on the northwesterly right-of-way line of County Road No. 256; thence S. 47°19'11" W. along said north right-of-way line a distance of 550.50 feet to the beginning of a 10°45'02" curve to the right; thence along said curve through a central angle of 18°26'28" a distance of 171.54 feet; thence S. 65°45'39" W. along said north right-of-way line a distance of 570.00 feet to the beginning of a 11°04'21" curve to the left; thence along said curve through a central angle of 14°42'42" a distance of 132.87 feet; thence S. 89°42'45" W. a distance of 132.65 feet; thence N. 0°23'20" W. a distance of 2637.05 feet; thence N. 0°22'41" W. a distance of 1320.41 feet; thence N. 89°44'05" E. a distance of 1315.10 feet; thence N. 0°23'08" W. a distance of 1321.21 feet; thence N. 89°42'00" E. a distance of 1314.83 feet to the point of beginning containing 256.19 acres all lying in Parcel A of T.50 N. & T.51 N., R.82 W.

The City of Buffalo, Wyoming, owner of the above described tract of land has caused the same to be shown on this plat as Lot 1, Block 2 of the Buffalo Park Addition to the City of Buffalo, Wyoming.

This plat is with the free consent and in accordance with the desires of the Mayor and City Council of the Town of the City of Buffalo, Wyoming pursuant to Resolution No. 990, duly passed, adopted, and approved on the 26 day of January 1984.

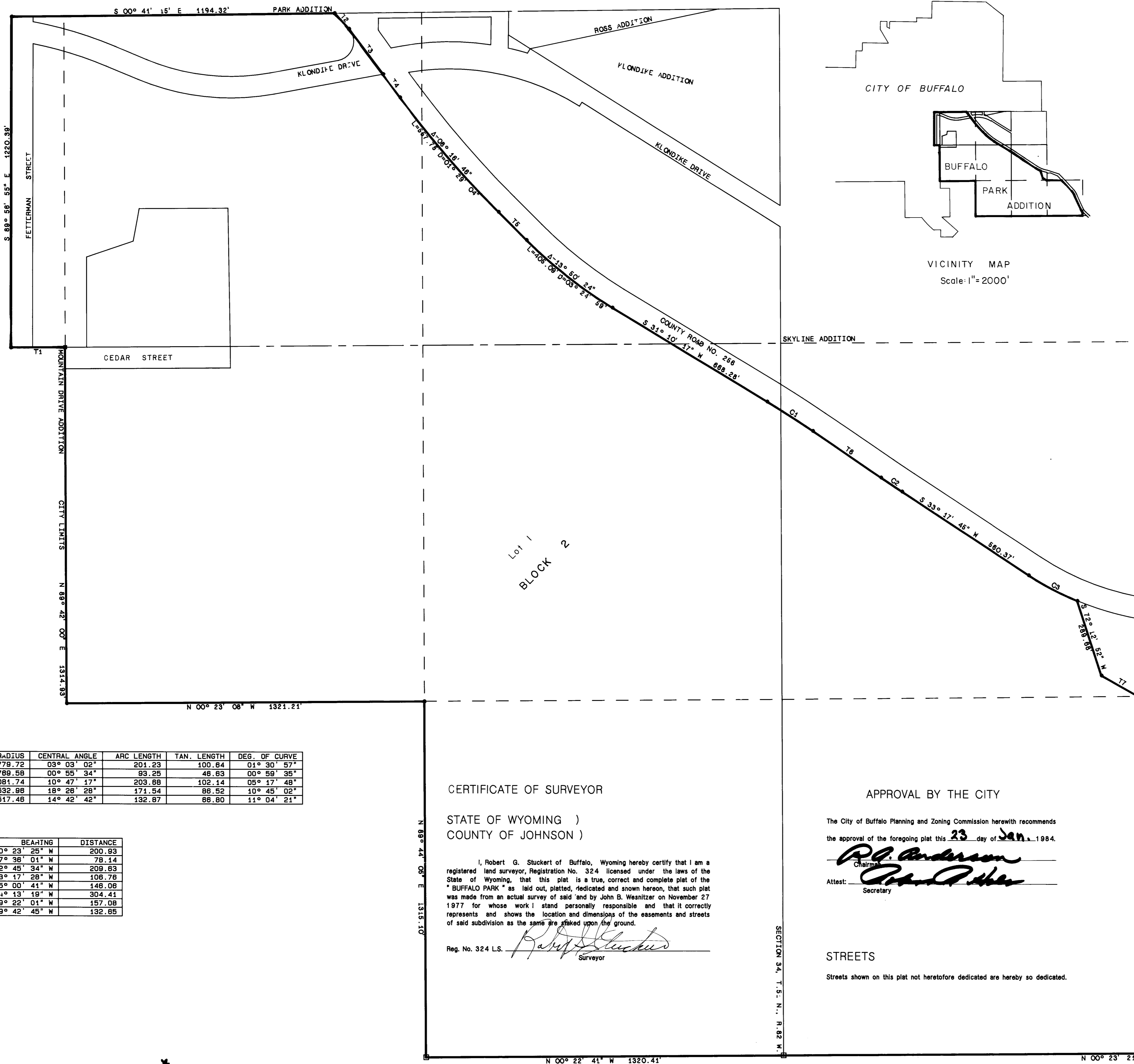
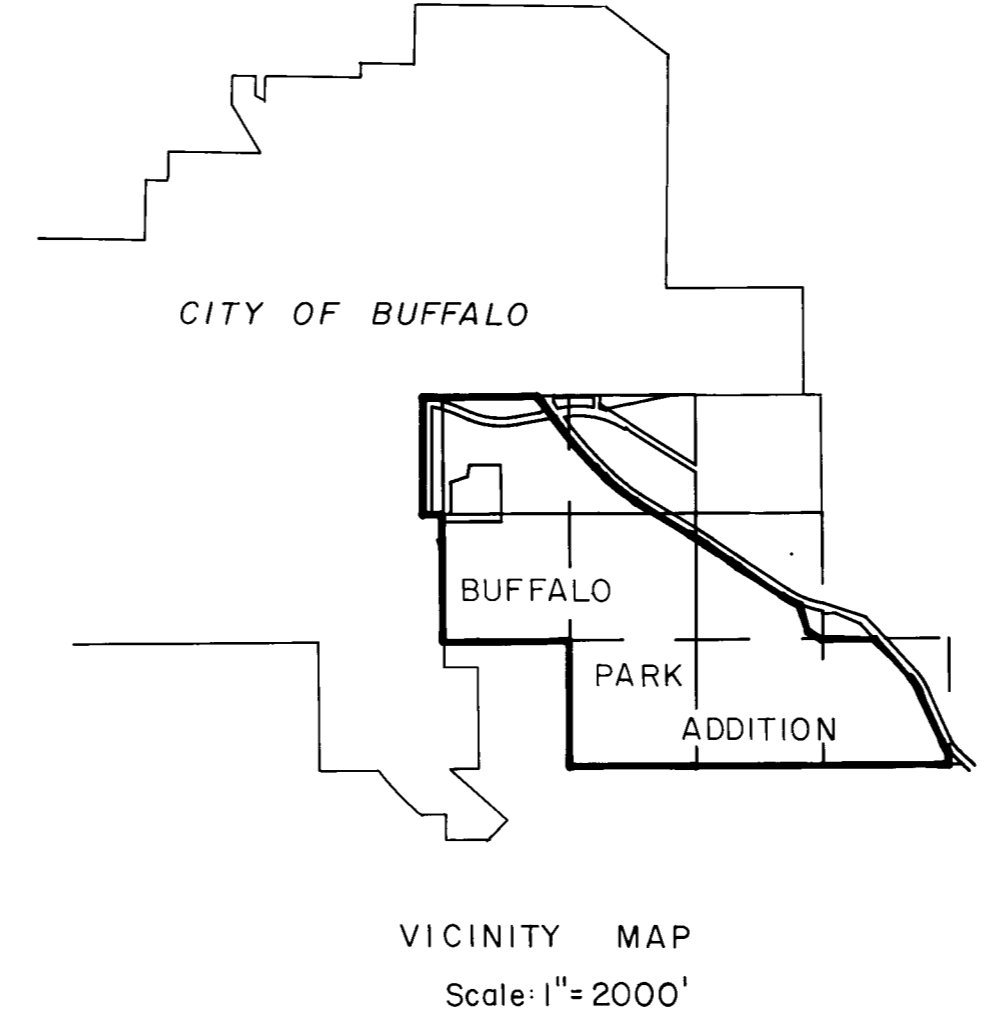
Mayor *Ernie E. ...*  
Attest: *Nadine Gross*  
City Clerk

STATE OF WYOMING )  
COUNTY OF JOHNSON )

The foregoing instrument was acknowledged before me by Emil G. Hecht, Mayor of the City of Buffalo and Nadine Gross, City Clerk of Buffalo:  
This 26<sup>th</sup> day of Jan. 1984.

Witness my hand and official seal. *Paul G. Jarris*  
Notary Public

My commission expires: 2/19/87



LABEL	RADIUS	CENTRAL ANGLE	ARC LENGTH	TAN. LENGTH	DEG. OF CURVE
C1	3779.72	03° 03' 02"	201.23	100.84	01° 30' 57"
C2	5789.58	00° 55' 34"	93.25	46.63	00° 59' 35"
C3	1081.74	10° 47' 17"	203.68	102.14	05° 17' 48"
C4	532.86	18° 26' 28"	171.54	86.52	10° 45' 02"
C5	517.46	14° 42' 42"	132.87	66.80	11° 04' 21"

LABEL	BEARING	DISTANCE
T1	N 00° 23' 25" W	200.93
T2	S 47° 36' 01" W	781.4
T3	S 52° 45' 34" W	209.83
T4	S 53° 17' 28" W	106.76
T5	S 45° 00' 41" W	146.06
T6	S 31° 13' 19" W	304.41
T7	S 29° 22' 01" W	157.08
T8	S 89° 42' 45" W	132.65

CERTIFICATE OF SURVEYOR

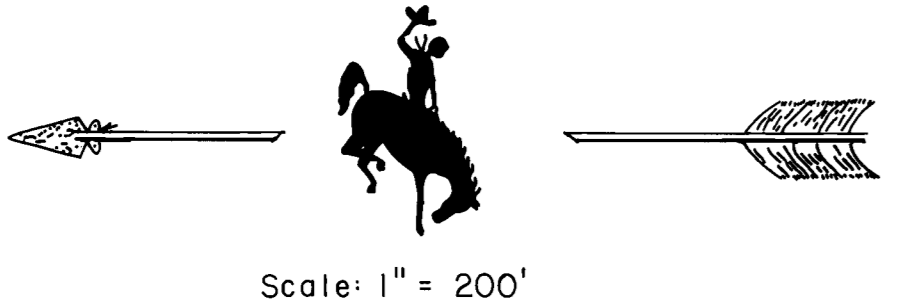
STATE OF WYOMING )  
COUNTY OF JOHNSON )  
I, Robert G. Stuckert of Buffalo, Wyoming hereby certify that I am a registered land surveyor, Registration No. 324 licensed under the laws of the State of Wyoming, that this plat is a true, correct and complete plat of the "BUFFALO PARK" as laid out, platted, rededicated and shown hereon, that such plat was made from an actual survey of said land by John D. Wenzel on November 27 1977 for whose work I stand personally responsible and that it correctly represents and shows the location and dimensions of the easements and streets of said subdivision as the same are staked upon the ground.  
Reg. No. 324 L.S. *Robert G. Stuckert*  
Surveyor

APPROVAL BY THE CITY

The City of Buffalo Planning and Zoning Commission herewith recommends the approval of the foregoing plat this 23 day of Jan. 1984.  
*Paul Anderson*  
Chairman  
Attest: *Paul Anderson*  
Secretary

STREETS  
Streets shown on this plat not heretofore dedicated are hereby so dedicated.

STATE OF WYOMING )  
COUNTY OF JOHNSON )  
This instrument was filed record on this 27<sup>th</sup> day of January, 1984 at 9:20 A.M., and was duly recorded in Book #2, Page 60-A. Fee: \$ 50.  
*Carl A. Barton*  
Register of Deeds.  
By \_\_\_\_\_ Deputy.



NOTE: This plat amends the original plat of the Buffalo Park Addition as was filed on the 30th day of November, 1982, recorded in Book 2, Page 60 in the office of the Register of Deeds of Johnson County, Wyoming.

Amended  
Plat  
Of the  
BUFFALO PARK ADDITION  
To the  
City of Buffalo Wyoming