

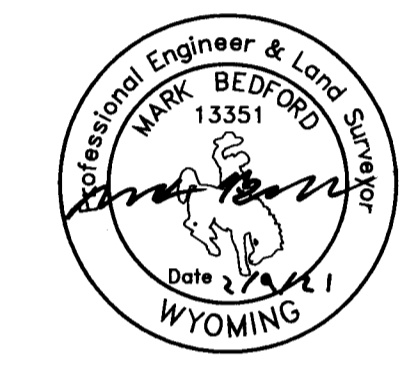
NOTE: Property lines shown without monumentation noted are for informational purposes only. They may or may not reflect the true position of actual boundary lines, and were not established as a part of this survey. They were derived from a section breakdown and record deed information, and not all conflicts, gaps, overlaps, and errors are shown.

- LEGEND**
- SECTION LINE
 - MID-SECTION LINE
 - SIXTEENTH LINE
 - HIGH WATER LINE, DULL KNIFE RESERVOIR
 - EASEMENT SIDE LINE
 - GLO BRASS CAP
 - 1.5" ALUMINUM CAP STAMPED LS5367

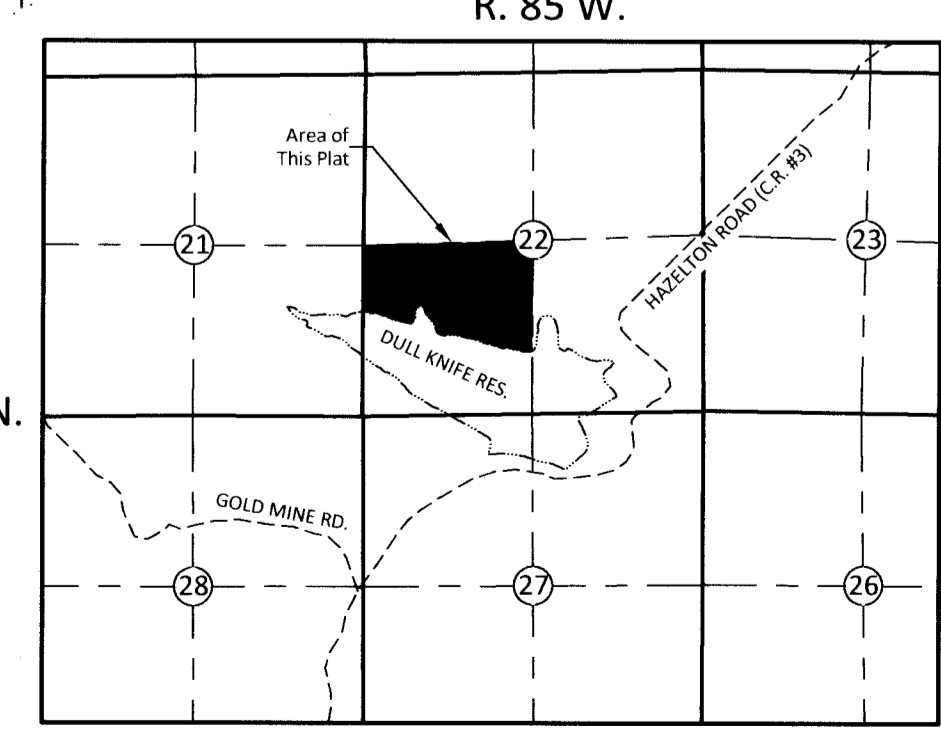
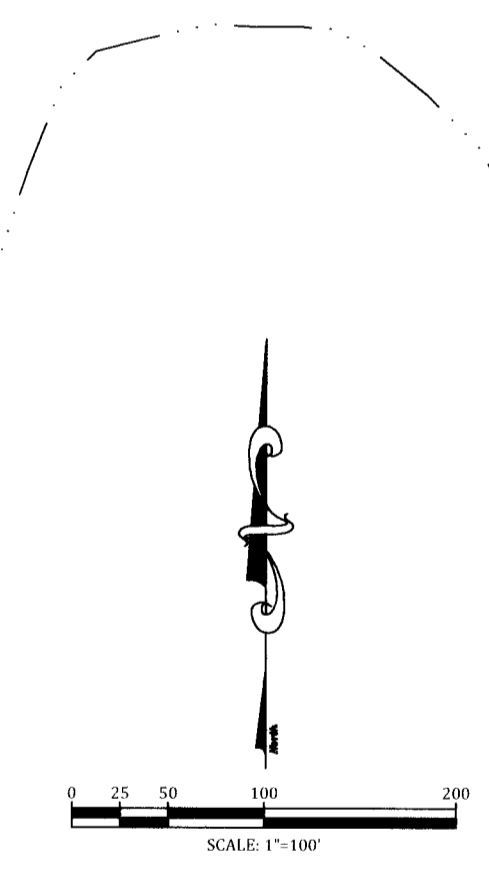
CERTIFICATE OF SURVEYOR

STATE OF WYOMING }
 COUNTY OF JOHNSON } SS

I, Mark Bedford, a duly Registered Professional Engineer and Land Surveyor in the State of Wyoming do hereby certify that this Plat was made from notes taken during an actual field survey by me or under my direct supervision in the fall of 2016 and is true and correct to the best of my knowledge and belief.



STATE OF WYOMING }
 COUNTY OF JOHNSON } SS
 Doc Number: 305876
 This instrument was filed for record on 2/10/2021 at 2:14 PM
 and was duly recorded in book: H.FILE page: 526 - 526 fees: 75.00
 By Janelan Johnson County Clerk
 Deputy



DULL KNIFE DRIVE

LINE	BEARING	DISTANCE
L1	S 35°48'16" W	115.86'
L2	S 23°14'10" W	129.73'
L3	S 62°12'29" W	174.32'
L4	S 75°08'09" W	88.66'
L5	N 83°42'04" W	35.97'
L6	S 84°43'12" W	83.78'
L7	N 86°59'44" W	70.40'
L8	N 89°12'28" W	33.49'
L9	S 83°31'29" W	88.94'
L10	N 38°53'28" W	174.27'
L11	N 17°14'00" W	39.42'
L12	S 69°45'26" W	4.22'
L13	S 37°07'16" W	51.23'
L14	S 78°56'52" W	73.20'
L15	N 65°44'23" W	146.70'
L16	S 85°37'44" W	48.88'

CIRCLE DRIVE

LINE	BEARING	DISTANCE
L17	N 01°15'36" E	62.82'
L18	N 43°26'03" E	64.20'
L19	N 11°33'47" E	110.27'
L20	N 12°30'12" W	130.97'
L21	N 02°30'14" E	206.10'
L22	N 65°06'31" W	39.71'
L23	N 57°15'34" W	66.75'
L24	N 62°26'56" W	89.86'
L25	S 11°08'16" W	225.22'
L26	S 11°50'32" E	101.50'
L27	S 37°51'10" E	96.00'
L28	S 29°02'48" E	13.89'
L29	S 18°02'06" E	32.55'

BLUEBIRD LANE

LINE	BEARING	DISTANCE
L30	N 22°33'51" W	497.51'
L31	N 11°56'35" W	20.97'
L32	N 21°26'45" W	115.78'
L33	N 01°02'09" W	12.63'
L34	N 87°05'00" E	230.58'

CURVE	RADIUS	ARC LENGTH	DELTA ANGLE	CHORD BEARING	CHORD LENGTH
C1	125.00'	69.84'	32°00'46"	S 51°48'39" W	68.96'
C2	200.00'	43.87'	12°34'06"	S 29°31'13" W	43.78'
C3	300.00'	204.06'	38°58'19"	S 42°43'19" W	200.15'
C4	250.00'	56.41'	12°55'40"	S 68°40'19" W	56.29'
C5	225.00'	83.11'	21°09'47"	S 85°43'07" W	82.64'
C6	500.00'	101.04'	11°34'44"	N 89°29'26" W	100.87'
C7	500.00'	72.29'	8°17'04"	S 88°51'44" W	72.23'
C8	650.00'	25.10'	2°12'44"	N 88°06'06" W	25.10'
C9	1250.00'	158.55'	7°16'03"	S 87°09'30" W	158.44'
C10	115.00'	115.51'	57°33'04"	N 67°41'59" W	110.72'
C11	450.00'	170.36'	21°41'27"	N 28°04'44" W	169.94'
C12	65.00'	105.52'	93°00'34"	N 63°44'17" W	94.31'
C13	230.00'	131.01'	32°38'09"	S 53°26'21" W	129.25'
C14	125.00'	91.25'	41°49'35"	S 58°02'04" W	89.24'
C15	150.00'	92.45'	35°18'46"	N 83°23'46" W	90.99'
C16	175.00'	87.45'	28°37'54"	N 80°03'20" W	86.54'
C17	60.00'	100.14'	95°37'52"	N 46°33'20" W	88.92'

HUMMINGBIRD LANE

LINE	BEARING	DISTANCE
L35	N 88°38'13" W	101.14'
L36	S 87°37'28" W	42.75'
L37	N 81°41'58" W	24.20'
L38	S 86°48'27" W	93.50'
L39	N 83°02'55" W	89.42'
L40	S 02°29'28" E	73.51'
L41	S 68°40'24" W	16.48'
L42	S 87°43'44" W	48.68'
L43	S 76°11'18" W	89.34'
L44	S 84°04'06" W	33.23'
L45	S 69°51'30" W	18.49'

CURVE	RADIUS	ARC LENGTH	DELTA ANGLE	CHORD BEARING	CHORD LENGTH
C34	350.00'	22.84'	3°44'19"	S 89°29'38" W	22.83'
C35	250.00'	46.58'	10°40'34"	N 87°02'15" W	46.52'
C36	150.00'	30.09'	11°29'35"	N 87°26'45" W	30.04'
C37	375.00'	66.39'	10°08'38"	N 88°07'14" W	66.30'
C38	37.00'	64.22'	99°26'33"	S 47°13'49" W	56.46'
C39	53.00'	65.83'	71°09'57"	S 33°05'28" W	61.68'
C40	100.00'	33.26'	19°03'20"	S 78°12'04" W	33.11'
C41	200.00'	40.28'	11°32'26"	S 81°57'31" W	40.22'
C42	300.00'	41.26'	7°52'48"	S 80°07'42" W	41.23'
C43	100.00'	24.80'	14°12'36"	S 76°57'48" W	24.74'

MEADOWLARK DRIVE

LINE	BEARING	DISTANCE
L46	N 89°38'59" W	415.15'
L47	S 77°11'48" W	11.37'
L48	N 87°09'47" W	30.04'
L49	S 84°55'11" W	65.17'
L50	N 77°47'30" W	23.02'

CURVE	RADIUS	ARC LENGTH	DELTA ANGLE	CHORD BEARING	CHORD LENGTH
C44	250.00'	57.39'	13°09'13"	S 83°46'24" W	57.27'
C45	350.00'	95.54'	15°38'26"	S 85°01'01" W	95.25'
C46	300.00'	41.46'	7°55'03"	S 88°52'42" W	41.42'
C47	180.00'	54.31'	17°17'20"	N 86°26'09" W	54.11'

CASH LANE

LINE	BEARING	DISTANCE
L51	N 25°14'55" W	158.95'
L52	N 03°10'41" E	115.96'
L53	N 05°12'21" W	45.66'
L54	N 06°19'06" E	46.76'
L55	N 16°11'00" E	101.66'
L56	N 12°18'31" E	147.52'

CURVE	RADIUS	ARC LENGTH	DELTA ANGLE	CHORD BEARING	CHORD LENGTH
C48	250.00'	124.03'	28°25'36"	N 11°02'07" W	122.77'
C49	250.00'	36.58'	8°23'02"	N 01°00'50" W	36.55'
C50	275.00'	55.31'	11°31'27"	N 00°33'22" E	55.22'
C51	225.00'	38.78'	9°52'34"	N 11°15'23" E	38.74'
C52	225.00'	15.26'	3°53'10"	N 14°15'05" E	15.26'

EAGLE LANE

LINE	BEARING	DISTANCE
L57	N 02°30'14" E	97.73'
L58	N 08°14'52" W	28.37'

CURVE	RADIUS	ARC LENGTH	DELTA ANGLE	CHORD BEARING	CHORD LENGTH
C53	300.00'	56.29'	10°45'05"	N 02°52'19" W	56.21'

Bighorn Surveying & Engineering, LLC
 401 Fort Street Suite 4 | Buffalo, WY 82834 | (307) 684-7400 | www.bighornsurveying.com

Prepared For:
 Dull Knife Property Owners Assn.
 C/O Charles Snyder
 P.O. Box 83
 Pavillion, WY 82523

DULL KNIFE RESERVOIR TRACTS
 IN PART OF THE SW 1/4 OF SECTION 22, T47N R85W
ACCESS EASEMENTS

DRAWN BY: MB
 CHECKED BY: MB
 PROJECT NO.: 16-41
 DWG: Dull Knife
 DATE: 4/28/17
 REVISION:
 PAGE: 1/1