

A REPLATTING
OF
LOTS 65A, 66A, 67A, AND 68A,
OF SHILOH ADDITION PHASE II
BEING A RESUBDIVISION OF
LOTS 65, 66, 67, AND 68, SHILOH ADDITION
TO THE CITY OF BUFFALO WY, PHASE II
IN PART OF THE SW¹/₄ SE¹/₄ OF SECTION 33, T. 51 N., R. 82 W.,
OF THE 6TH P.M.

CERTIFICATE OF DEDICATION

THE ABOVE OR FORGOING SUBDIVISION OF LOTS 65, 66, 67 AND 68 OF THE SHILOH ADDITION TO THE CITY OF BUFFALO, WYOMING, PHASE II, AS APPEARS ON THIS PLAT, IS WITH THE FREE CONSENT AND IN ACCORDANCE WITH THE DESIRES OF THE UNDERSIGNED OWNERS AND PROPRIETORS, CONTAINING 0.87 ACRES MORE OR LESS, HAVE BY THESE PRESENTS LAID OUT AND SURVEYED AS LOTS 65A, 66A, 67A, AND 68A OF THE SHILOH ADDITION PHASE II, TO THE CITY OF BUFFALO, WYOMING, AND DO HEREBY RESERVE PERPETUAL EASEMENTS AS ARE LAID OUT AND DESIGNATED ON THIS PLAT. SAID LOTS ARE FURTHER DESCRIBED AS:

LOT 65A

A parcel of land located in parts of Lot 65, 66 and 67 of the Shiloh Addition to Buffalo, Wyoming, Phase II, as the same are shown on the plat filed with the Johnson County Clerk in Hanging File, pages 279 A-C. Said parcel being more particularly described as follows:
Beginning at the Southeast corner of said Lot 65, as monumented by a 2" aluminum cap stamped LS 5367;
Thence along the Southern line of said Lot 65 S 89°52'37" W, a distance of 86.65 feet to the Southwest corner of said Lot, as monumented by a 2" aluminum cap stamped LS 5367;
Thence along the Westerly line of Lot 65 N 15°29'04" W, a distance of 98.41 feet to the Northwest corner of said Lot, as monumented by a 2" aluminum cap stamped LS 5367;
Thence along the Northwesterly line of lots 65 and 66 N 58°27'58" E, a distance of 20.81 feet to a northerly point on Lot 65, monumented by a LS 5367;
Thence along said line N 58°27'58" E, a distance of 57.80 feet to a point on the Northwesterly line of Lot 66, monumented by an aluminum cap stamped PELS 13351;
Thence S 00°00'00" E, a distance of 45.63 feet to an aluminum cap stamped PELS 13351;
Thence S 45°52'37" E, a distance of 84.31 feet to an aluminum cap stamped PELS 13351;
Thence S 24°55'52" W, a distance of 34.71 feet to the Point of Beginning. Said parcel contains 0.23 acres, more or less.

LOT 66A

A parcel of land located in parts of Lot 65, 66 and 67 of the Shiloh Addition to Buffalo, Wyoming, Phase II, as the same are shown on the plat filed with the Johnson County Clerk in Hanging File, pages 279 A-C. Said parcel being more particularly described as follows:
Beginning at the Northern most corner of Lot 66, as monumented by a 2" aluminum cap stamped LS 5367;
Thence along the Northern line of said Lot S 80°51'43" E, a distance of 22.84 feet to an aluminum cap stamped LS 5367;
Thence along said boundary of Lot 66 to a non-tangent curve to the left with a radius of 230.00 feet, a delta angle of 9°47'58", a distance of 39.24 feet, a chord bearing S 45°49'21" E, and a chord length of 39.29 feet to an aluminum cap stamped PELS 13351;
Thence S 24°55'52" W, a distance of 122.39 feet to an aluminum cap stamped 13351;
Thence N 45°52'37" W, a distance of 84.31 feet to an aluminum cap stamped 13351;
Thence N 00°00'00" W, a distance of 45.63 feet to an aluminum cap stamped 13351 on the southerly right of way of Rendezvous Street;
Thence along said right of way N 58°27'58" E, a distance of 72.04 feet to the Point of Beginning. Said parcel contains 0.22 acres, more or less.

LOT 67A

A parcel of land located in parts of Lot 67 and 68 of the Shiloh Addition to Buffalo, Wyoming, Phase II, as the same are shown on the plat filed with the Johnson County Clerk in Hanging File, pages 279 A-C. Said parcel being more particularly described as follows:
Beginning at the Southeast corner of said Lot 67, as monumented by a 2" aluminum cap stamped LS 5367;
Thence along the Southern line of said Lot S 89°47'51" W, a distance of 37.61 feet to an aluminum cap stamped LS 5367;
Thence continuing along said Southern line, S 89°52'52" W, a distance of 51.60 feet to an aluminum cap stamped LS 5367;
Thence N 24°55'52" E, a distance of 157.09 feet to an aluminum cap stamped PELS 13351 on the southerly right of way line of Melody Street;
Thence along said southerly right of way along a non-tangent curve to the left with a radius of 230.00 feet, an interior angle of 17°54'26", a distance of 71.89 feet, a chord bearing S 59°40'33" E, and a chord distance of 71.59 feet;
Thence leaving said right of way, S 20°05'50" W, a distance of 112.94 feet to the Point of Beginning. Said parcel contains 0.23 acres, more or less.

LOT 68A

A parcel of land located in part of Lot 68 of the Shiloh Addition to Buffalo, Wyoming, Phase II, as the same is shown on the plat filed with the Johnson County Clerk in Hanging File, pages 279 A-C. Said parcel being more particularly described as follows:
Beginning at the Southeast corner of Lot 68, as monumented by a 2" aluminum cap stamped LS 5367;
Thence along the Southern line of said Lot S 89°49'55" W, a distance of 100.57 feet to an aluminum cap stamped LS 5367;
Thence N 20°05'50" E, a distance of 112.94 feet to an aluminum cap stamped PELS 13351;
Thence along the Northern line of Lot 68 along a non-tangent curve to the left with a radius of 230.00 feet, an interior angle of 15°48'59", a distance of 63.49 feet, a chord bearing of S 76°32'16" E, a chord distance of 63.29 feet to a 2" aluminum cap stamped LS 5367 at its northeast corner;
Thence along the easterly line of said Lot 68, S 00°07'49" E, a distance of 91.04 feet to the Point of Beginning. Said parcel contains 0.18 acres, more or less.

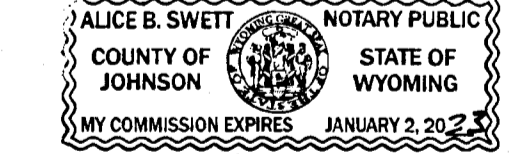
IN TESTIMONY WHEREOF: Steven Adami, president of Cloud Peak Company, Inc., has caused these presents to be signed this 29 day of September, 2021.

Steven Adami
Steven Adami, President

STATE OF WYOMING }
COUNTY OF JOHNSON } SS

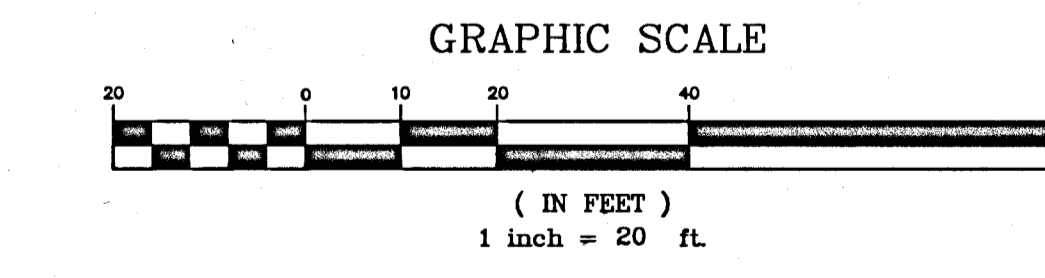
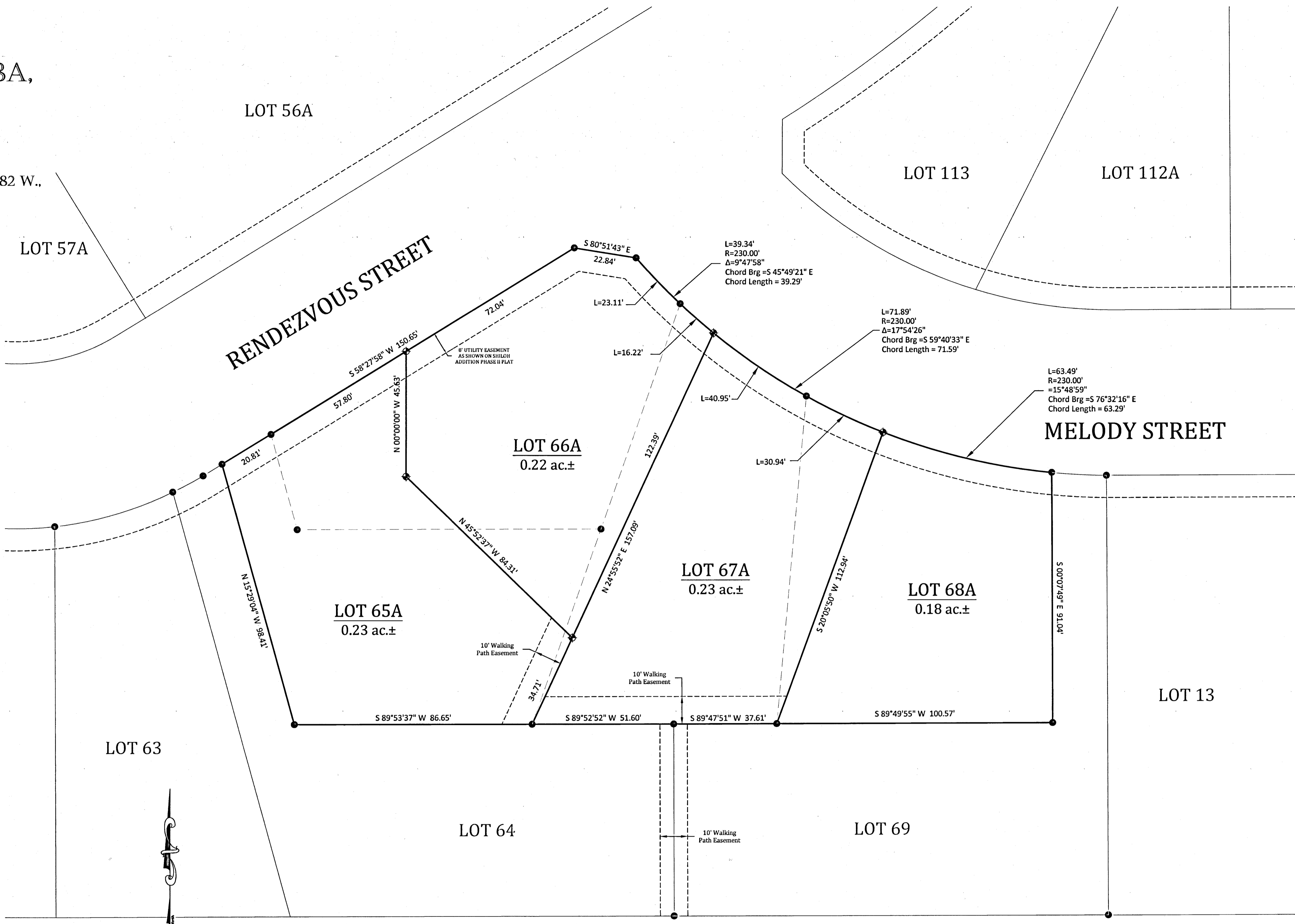
The Forgoing Instrument was Acknowledged before me this 29 Day of September, 2021 by Steven Adami in his capacity as president of Cloud Peak Company, Inc.

Witness my hand and official seal:



Alice B. Swett
Notary Public

My Commission Expires: 01/02/2022



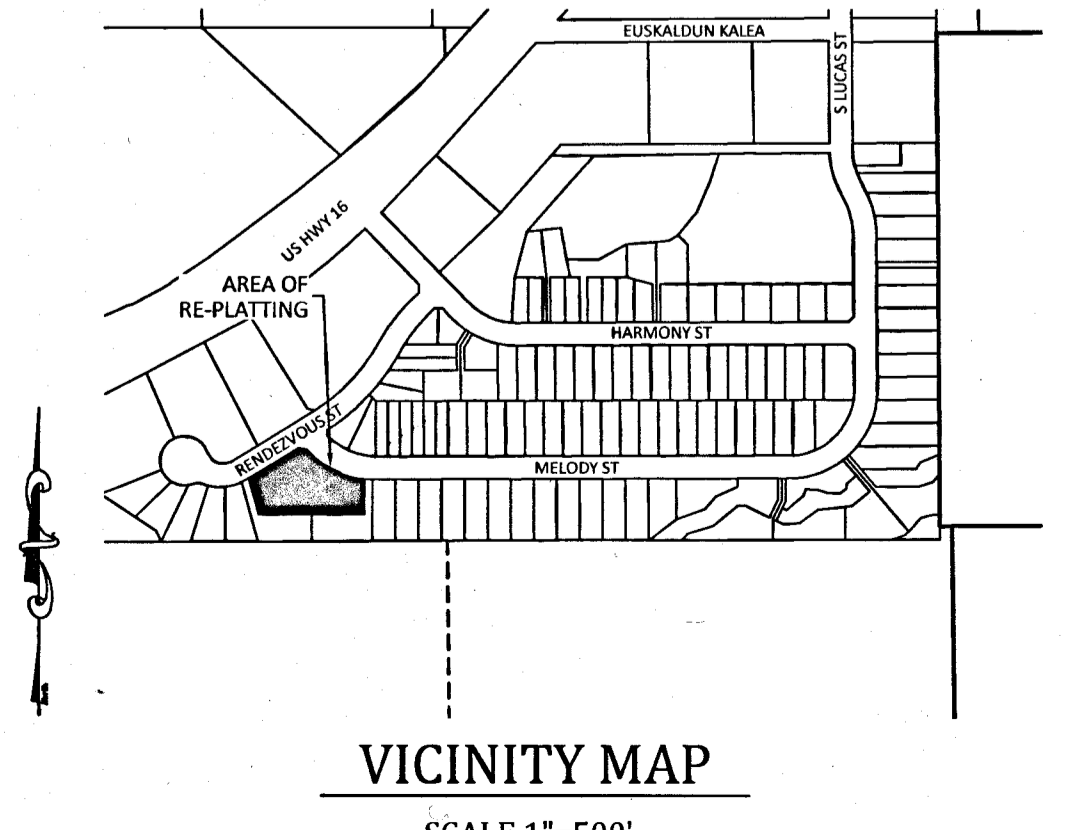
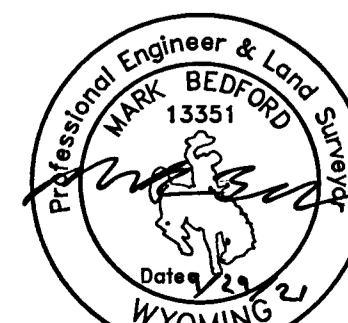
INCORPORATED CITY APPROVAL
APPROVED BY THE CITY OF BUFFALO ON THIS 22nd DAY OF October, 2021.
Julie Silbernagel ATTEST: JULIE SILBERNAGEL, CITY CLERK
Terry Asay TERRY ASAY, CITY PLANNER

RECORDER'S CERTIFICATE
STATE OF WYOMING }
COUNTY OF JOHNSON } SS
This instrument was filed for record on 10/28/2021 at 11:09 AM and was duly recorded in book: H.FILE page: 602 - 602 fees: 75.00
By: *Jane Con* Johnson County Clerk
Deputy

- LEGEND
- SET ALUMINUM CAP, PELS 13351
 - FOUND ALUMINUM CAP, PLS 5367
 - ABANDONED LOT LINE
 - ESTABLISHED LOT LINE
 - EASEMENT SIDE LINE

CERTIFICATE OF SURVEYOR
STATE OF WYOMING }
COUNTY OF JOHNSON } SS

I, Mark Bedford, a duly Registered Professional Engineer and Land Surveyor in the State of Wyoming do hereby certify that this Plat of Lots 65A, 66A, 67A, and 68A Shiloh Addition Phase II was made from notes taken during an actual field survey by me or under my direct supervision in November of 2020 and is true and correct to the best of my knowledge and belief.



VICINITY MAP
SCALE 1"=500'

Bighorn
Surveying &
Engineering, LLC
Buffalo, WY 82834 (307) 662-7400
www.bighornsurveying.com
821 Fort Street

CLOUD PEAK COMPANY, INC.
PO DRAWER G
BUFFALO, WY 82834-0200

SHILOH ADDITION PHASE II
BOUNDARY LINE ADJUSTMENT
LOTS 65A, 66A, 67A, AND 68A

DRAWN BY: AE
CHECKED BY: MB
PROJECT NO.: 21-23
DWG: LOT 63-69
DATE: 9/3/2021
REVISION:
PAGE: 1/1