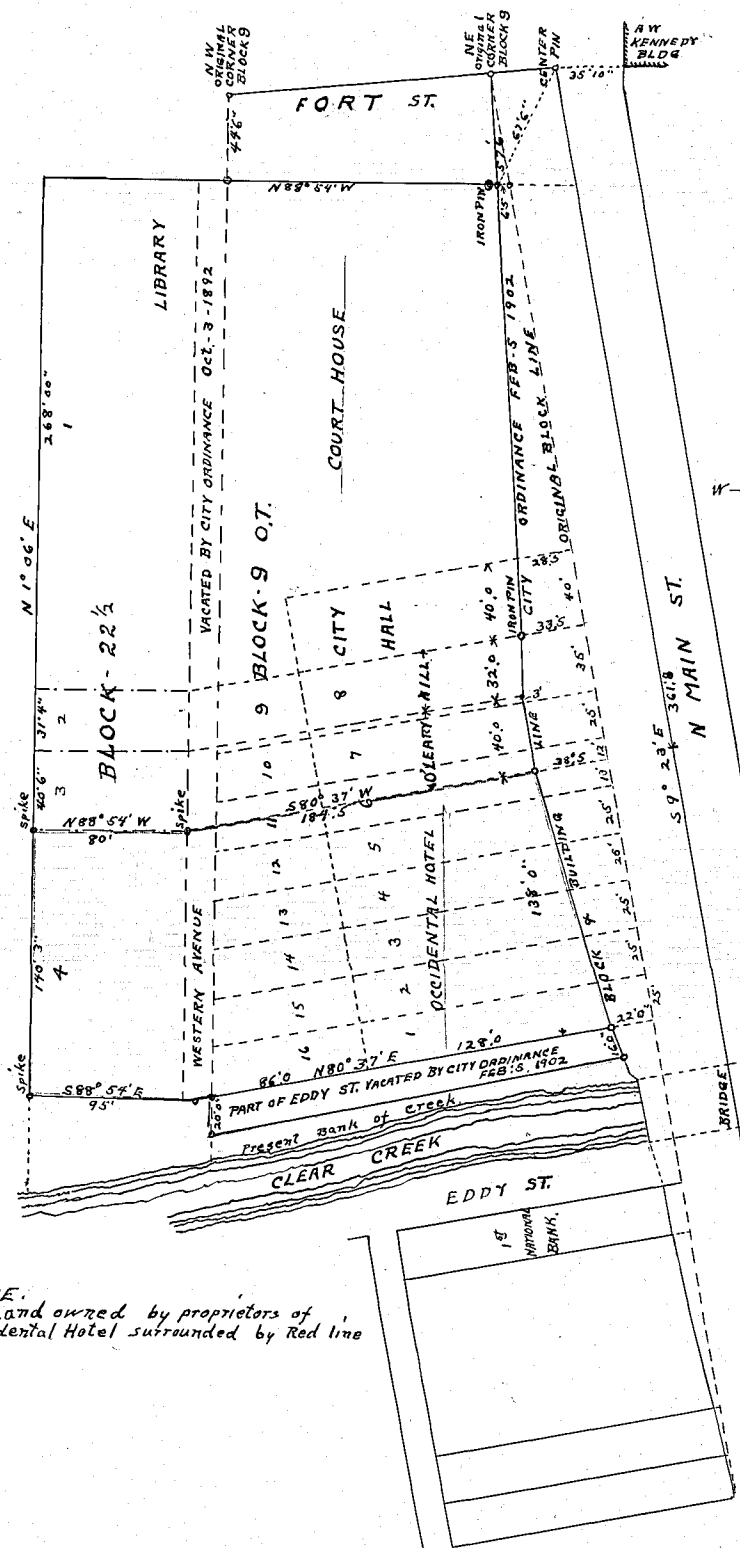
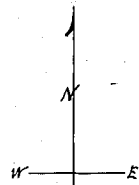


N A ST.



NOTE:
Land owned by proprietors of
Occidental Hotel surrounded by Red line



PLAT OF
BLOCK 9 ORIGINAL TOWN
CITY OF BUFFALO
scale 1"=50 feet

SURVEYED JUNE 5-1926
BY T.N. DOLL - COUNTY SURVEYOR
JOHNSON COUNTY WYOMING

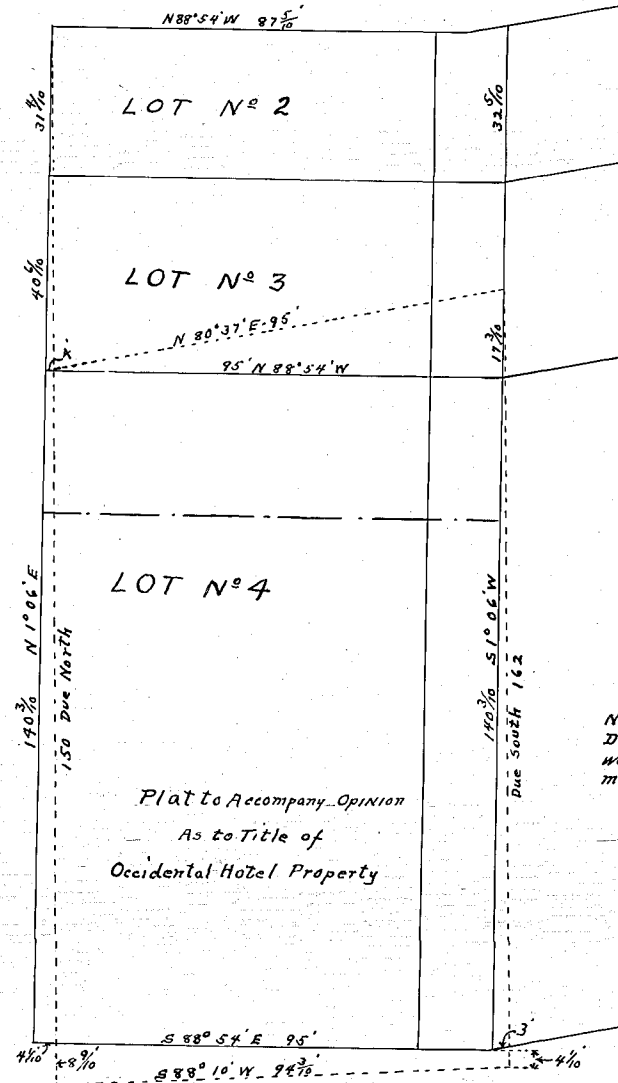
CERTIFICATE OF SURVEYOR

State of Wyoming } ss.
County of Johnson }

I, Clyde R Wood of Buffalo Wyoming hereby certify
that the maps shown hereon were copied by me from the
original maps on file in the office of the County Clerk and Register
of Deeds and that they are True Copies of said Maps except as
noted in Right hand margin. They are correct only in so far as
the original Maps are correct

Copied in Oct 1946

Clyde R Wood
County Surveyor



Plat to Accompany Opinion
As to Title of
Occidental Hotel Property

NOTE
Dotted lines on this copy
were shown on the original
map in an orange color
CRWood.