

**CURVE DATA TABLE**

CURVE	LENGTH	RADIUS	DELTA	CHORD	CH BEARING
C1(M)	37.58	330.00	6°31'30"	37.56	N78°48'07"E
C1(R)	37.65	330.00	6°32'13"	37.63	N79°23'00"E
C2(M)	33.46	330.00	5°48'33"	33.44	N72°38'05"E
C2(R)	33.39	330.00	5°47'50"	33.38	N73°12'59"E
C3(M)	25.67	270.00	5°26'54"	25.66	S72°27'16"W
C3(R)	25.70	270.00	5°27'12"	25.69	N73°02'40"E
C4(M)	44.16	270.00	9°22'13"	44.11	S79°51'49"W
C4(R)	44.16	270.00	9°22'16"	44.11	N80°27'24"E
C5(M)	22.92	270.00	4°51'50"	22.91	S86°58'50"W
C5(R)	22.89	270.00	4°51'28"	22.89	S87°34'16"W
C6(M)	33.03	21.00	90°07'28"	29.73	N45°31'31"W
C6(R)	32.99	21.00	90°00'00"	29.70	N45°00'00"W

**RESUBDIVISION BLOCK 4  
BUFFALO RIDGE ESTATES**

A REPLAT OF LOTS 2-6, BLOCK 4;  
BUFFALO RIDGE ESTATES,  
CITY OF BUFFALO,  
JOHNSON COUNTY, WYOMING.

**DEDICATION**

KNOW ALL PERSONS BY THESE PRESENTS THAT: BUFFALO RIDGE LLC, A WYOMING LIMITED LIABILITY CORPORATION, OWNER IN FEE SIMPLE OF LOTS 2-6, BLOCK 4 BUFFALO RIDGE ESTATES, CITY OF BUFFALO, JOHNSON COUNTY, WYOMING, HAS CAUSED THE SAME TO BE SURVEYED AND REPLATTED, DOES HEREBY DECLARE THE SUBDIVISION OF SAID LAND AS IT APPEARS ON THIS REPLAT, TO BE THEIR FREE ACT AND DEED AND IN ACCORDANCE WITH THEIR DESIRES, AND DO HEREBY DEDICATE TO THE USE OF THE PUBLIC THE STREETS AND ALLEYS AND GRANT THE EASEMENTS FOR THE PURPOSES INDICATED HEREON.

BUFFALO RIDGE LLC, A WYOMING LIMITED LIABILITY CORPORATION.

*Bruce A Beckner*  
BRUCE A BECKNER  
BUFFALO RIDGE LLC

*Craig A Beckner*  
CRAIG A BECKNER  
BUFFALO RIDGE LLC

*Justin C Beckner*  
JUSTIN C BECKNER  
BUFFALO RIDGE LLC

**ACKNOWLEDGMENT**

STATE OF WYOMING )  
COUNTY OF JOHNSON ) SS

THE DEDICATION INSTRUMENT WAS ACKNOWLEDGED BEFORE ME THIS \_\_\_\_\_ DAY OF \_\_\_\_\_, 2011, BY BRUCE A BECKNER, CRAIG A BECKNER, AND JUSTIN C. BECKNER, BUFFALO RIDGE LLC, A WYOMING LIMITED LIABILITY CORPORATION.

NOTARY PUBLIC, JOHNSON COUNTY, WYOMING

MY COMMISSION EXPIRES: \_\_\_\_\_

**NOTES**

- 1.) BASIS OF BEARINGS: WYOMING STATE PLANE COORDINATE SYSTEM, EAST CENTRAL ZONE (NAD 1983/86).
- 2.) DISTANCES: US SURVEY FOOT (GROUND) COMBINED FACTOR 0.999742898.
- 3.) ERROR OF CLOSURE EXCEEDS 1:10,000.

**STATEMENT VACATING PREVIOUS PLATTING**

THIS PLAT IS A RESUBDIVISION OF LOTS 2-6 BLOCK 4, BUFFALO RIDGE ESTATES AS RECORDED IN BOOK \_\_\_\_\_ OF PLATS, PAGE \_\_\_\_\_ OF THE RECORDS OF THE JOHNSON COUNTY CLERK. ALL EARLIER PLATS OR PORTIONS THEREOF, ENCOMPASSED BY THE BOUNDARIES OF THIS PLAT ARE HEREBY VACATED.

**APPROVALS**

THE CITY OF BUFFALO PLANNING COMMISSION HEREBY RECOMMENDS APPROVAL OF THIS PLAT ON THIS \_\_\_\_\_ DAY OF \_\_\_\_\_, 2011.

*Chairman*  
CHAIRMAN

*Secretary*  
ATTEST: SECRETARY

APPROVED BY THE CITY OF BUFFALO, WYOMING, THIS \_\_\_\_\_ DAY OF \_\_\_\_\_, 2011.

MAYOR

*City Clerk*  
ATTEST: CITY CLERK

STATE OF WYOMING  
COUNTY OF JOHNSON

By *Jane Law*  
REGISTER OF DEEDS

Doc Number: 138242  
This instrument was Filed for record on 5/20/2014 at 2:37 PM JULY  
and was duly recorded in book: H FILE page: 414 - 414 fees: 75.00  
Johnston County Clerk  
, Deputy  
BY: DEPUTY

PROTECTIVE CONVENANTS ARE RECORDED IN BOOK \_\_\_\_\_ PAGE \_\_\_\_\_

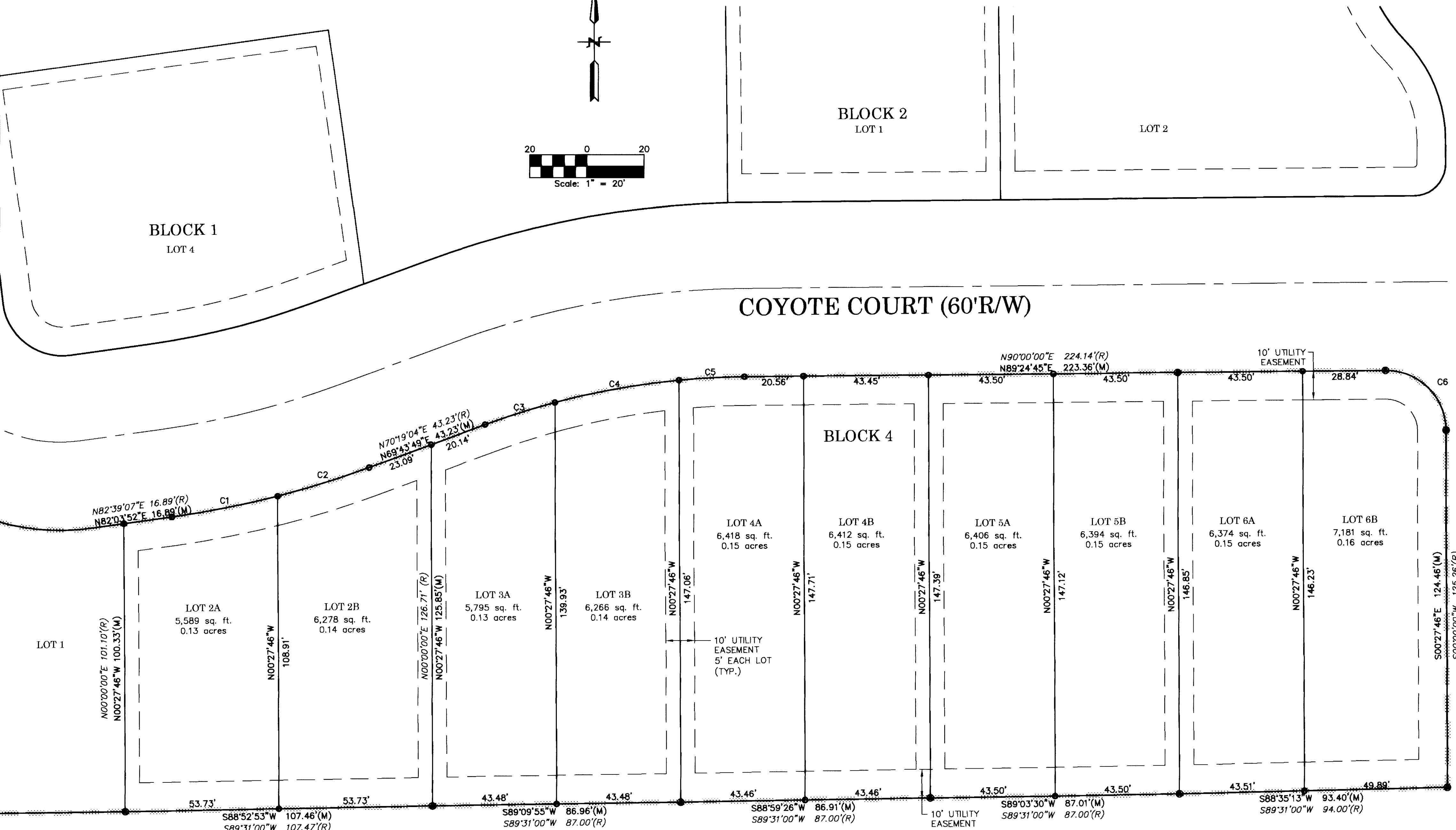
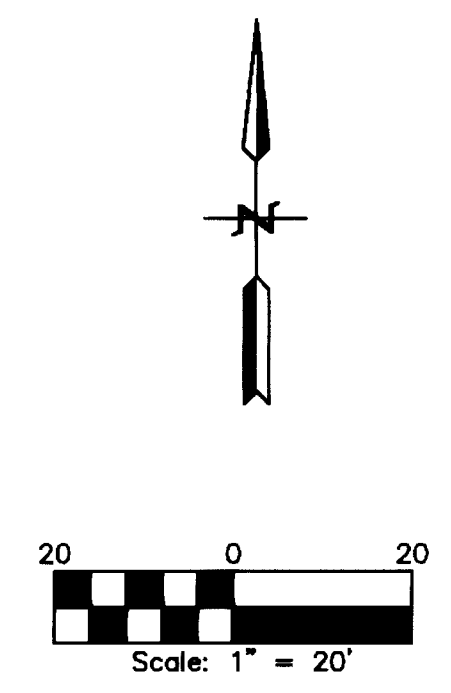
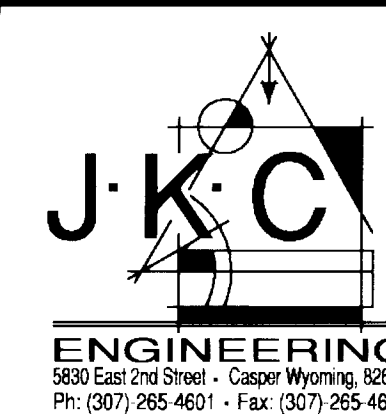
**RESUBDIVISION  
BLOCK 4  
BUFFALO RIDGE  
ESTATES**

A REPLAT OF LOTS 2-6, BLOCK 4;  
BUFFALO RIDGE ESTATES,  
CITY OF BUFFALO,  
JOHNSON COUNTY, WYOMING.

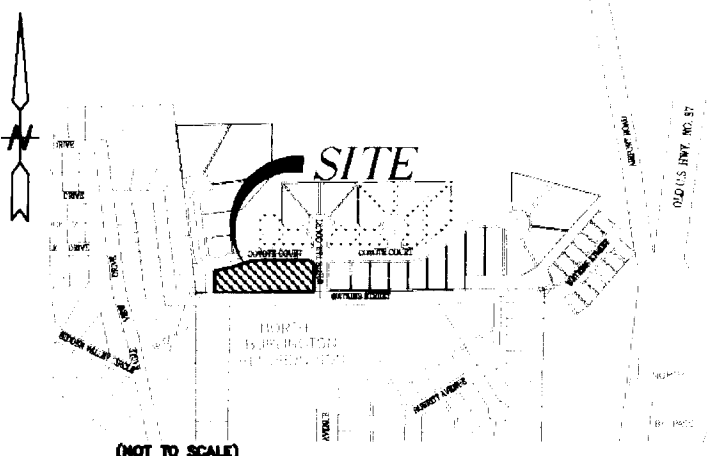
PREPARED OCTOBER, 2011 SHEET 1 OF 1

**BUFFALO RIDGE LLC**

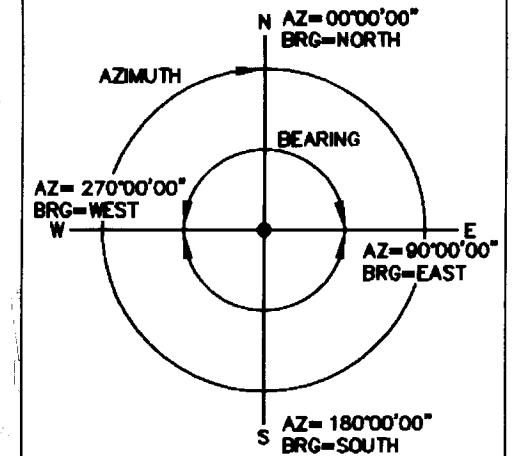
1628 GRAY BOULEVARD, NEWCASTLE, WY. 82701  
307.630.5421 TEL



**VICINITY MAP**



**AZIMUTH**



**CERTIFICATE OF SURVEYOR**

I, CHRIS ASBURY, A REGISTERED PROFESSIONAL LAND SURVEYOR IN THE STATE OF WYOMING, HEREBY STATE THAT THIS REPLAT OF LOTS 2-6, BLOCK 4, BUFFALO RIDGE ESTATES WAS PREPARED FROM OFFICIAL PLATS AND DEEDS OF RECORD AND FROM NOTES OF A FIELD SURVEY CONDUCTED BY ME OR UNDER MY DIRECT SUPERVISION DURING THE MONTHS OF AUGUST-OCTOBER, 2011, THAT THE MONUMENTS ARE SET OR FOUND AS SHOWN AND THAT THIS PLAT CORRECTLY REPRESENTS SAID SURVEY OF THE LAND DEPICTED HEREON TO THE BEST OF MY KNOWLEDGE.

**LEGEND**

- SET #5 x 24" LONG REBAR WITH 2" ALUMINUM CAP STAMPED "P.L.S. 5009"
- EXISTING ALUM. CAPPED REBAR
- (M) INDICATES MEASURED OR COMPUTED DATA THIS SURVEY.
- (R) RECORD DATA PER PLAT OF BUFFALO RIDGE ESTATES ON FILE AT THE JOHNSON COUNTY CLERK'S OFFICE.
- BORDER FOR REZONE TO R-2