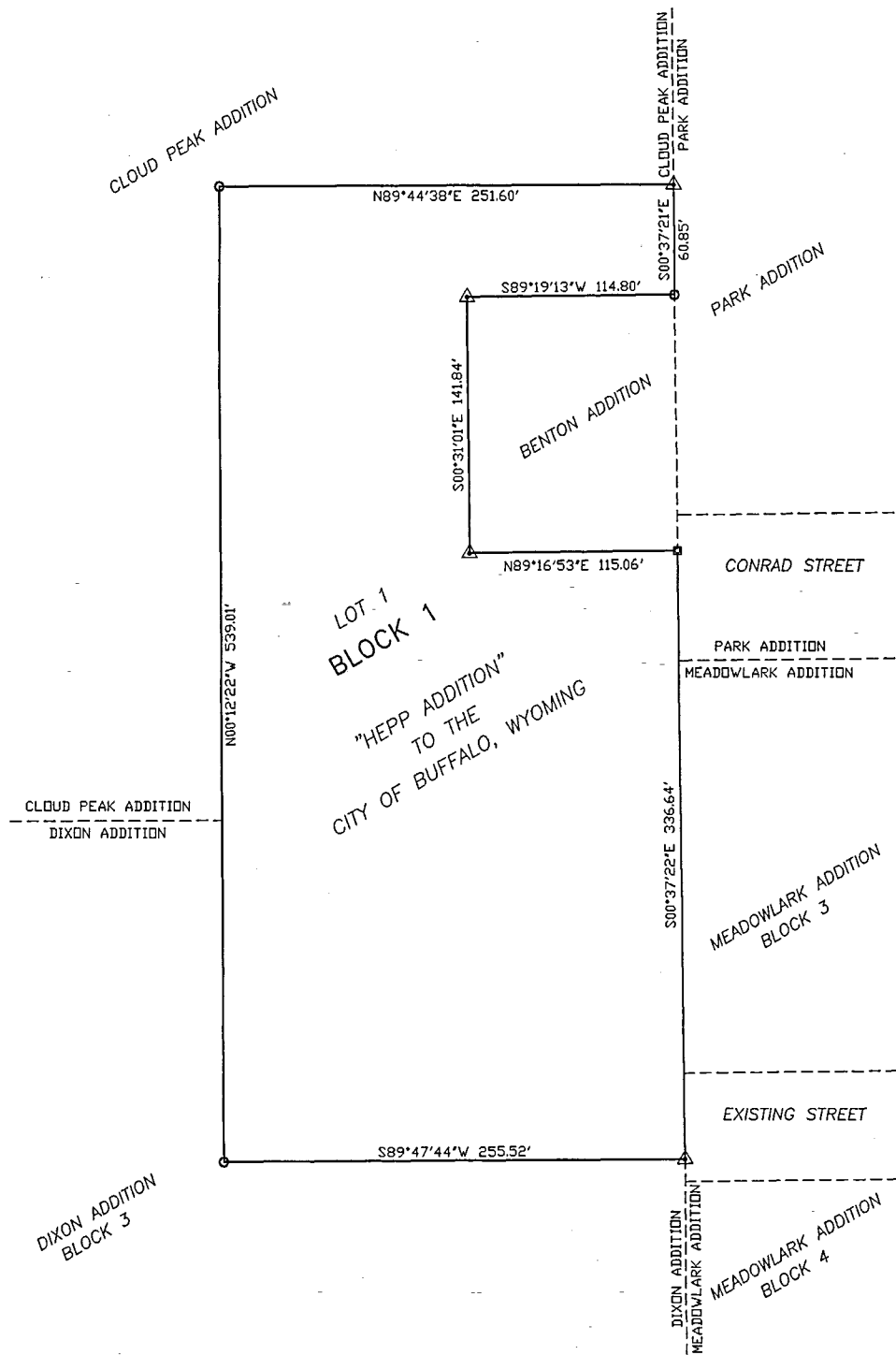


NORTH

SCALE: 1" = 50'

LEGEND

- △ = FOUND IRON PIPE
- = FOUND REBAR
- = PROPERTY CORNER POSITION



**"HEPP ADDITION"
TO THE
CITY OF BUFFALO, WYOMING**

A tract of land located in Lot 10, Section 3, T50N, R82W, of the 6th P.M., Johnson County, Wyoming, said tract being more particularly described as follows:

Commencing at the southeast corner of the Benton Addition to the City of Buffalo, Wyoming, said southeast corner being the true point of beginning;

thence S00°37'22"E along the Westerly line of the Park Addition to the City of Buffalo, Wyoming, and along the Westerly line of the Meadowlark Addition to the City of Buffalo, Wyoming, a distance of 336.64 feet to a point;

thence S89°47'44"W along the Northerly line of the Dixon Addition to the City of Buffalo, Wyoming, a distance of 255.52 feet to a point;

thence N00°12'22"W along the Easterly line of said Dixon Addition and along the Easterly line of the Cloud Peak Addition to the City of Buffalo, Wyoming, a distance of 539.01 feet to a point;

thence N89°44'38"E along the Southerly line of said Cloud Peak Addition a distance of 251.60 feet to a point;

thence S00°37'22"E along the said Westerly line of said Park Addition a distance of 60.85 feet to a point;

thence S89°19'13"W along the Northerly line of said Benton Addition a distance of 114.80 feet to a point;

thence S00°31'01"E along the Westerly line of said Benton Addition a distance of 141.84 feet to a point;

thence N89°16'53"E along the Southerly line of said Benton Addition a distance of 115.06 feet to the true point of beginning.

Said tract of land containing 2.76 acres, more or less.

The City of Buffalo, Wyoming has caused the same to be annexed in the manner as shown on the plat by Ordinance 1179, which annexation shall be known as the "Hepp Addition".

Dated this 2nd day of August, 2000.

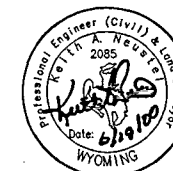
Nels B. Lofgren
Nels B. Lofgren
Mayor, City of Buffalo

Attest: *Kay E. Wright*
City Clerk

CERTIFICATE OF SURVEYOR

STATE OF WYOMING)
)ss
COUNTY OF JOHNSON)

I, Keith A. Neustel, a duly Registered Land Surveyor in the State of Wyoming, do hereby certify that this Plat of the "Hepp Addition" represents the conditions as found on the ground, plats of record, and descriptions of record.



State of Wyoming)
County of Johnson)ss

083949

This instrument was filed for record on the 10 day of August, 2000, at 2:00 P.M., and was duly recorded in Plat Book #2, Page 187.
Fee: \$ 50.00

Linda Bandhart
Register of Deeds

By: Deputy

HEPP ADDITION

Prepared for:
City of Buffalo
46 N. Main
Buffalo, WY 82834

GRIZZLY ENGINEERING
CONSULTING ENGINEERS and LAND SURVEYORS

P.O. BOX 1004
BUFFALO, WYOMING 82834

307/684-7029
Date Drawn: 06/16/2000 Scale: 1" = 50'
Drawn By: GT Checked By: KAN
Project No. 97-136 File Name: PLAT.DWG