

STATE OF COLORADO
County of Larimer
The CERTIFICATE OF DEDICATION as shown on the annexed plat was acknowledged before me this 12th day of February, 1973, by Warren A. Stobbe as President and James A. Wilburn as Executive Vice President of Interladdo, Inc., a Delaware Corporation.

Notary Public in and for the State of Colorado
Residing at *Denver, Colorado*
My Commission Expires *June 18, 1974*

STATE OF WYOMING
County of Johnson
I hereby certify that James B. Spring, a Wyoming Registered Land Surveyor, Registration No. 381, and Robert G. Stuckert, a Wyoming Registered Land Surveyor, Registration No. 372 and January, 1973, a plat and survey were made under his supervision, a certain tract of land to be known as LITTLE PINEY ESTATES, FIRST FILING, at the request of the owners, and that the annexed plat and description conform with the work done on the ground.

Notary Public in and for the State of Wyoming
Residing at *Yellowstone, Montana*
My Commission Expires *March 20, 1974*

STATE OF WYOMING
County of Johnson
Approved this 6th day of March, A.D., 1973, Board of Commissioners, Johnson County, Wyoming.

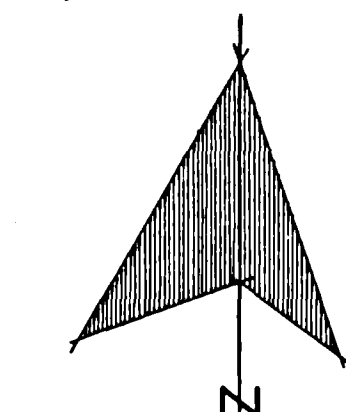
STATE OF WYOMING
County of Johnson
I hereby certify that the annexed plat was filed for record in my office on the 6th day of March, A.D., 1973, at 11 o'clock, A.M.

Notary Public in and for the State of Wyoming
Residing at *Johnson County, Wyoming*
My Commission Expires *March 20, 1974*

POINT OF BEGINNING
NW CORNER SECTION 27,
T. 53 N., R. 83 W., 6TH PM,
JOHNSON CO., WYOMING.

N 1/4 CORNER SEC. 27,
T. 53 N., R. 83 W., 6TH PM,
JOHNSON CO., WYO.

NE COR. NW 1/4 NE 1/4
SEC. 27, T. 53 N., R. 83 W.,
6TH PM, JOHNSON CO., WYO.



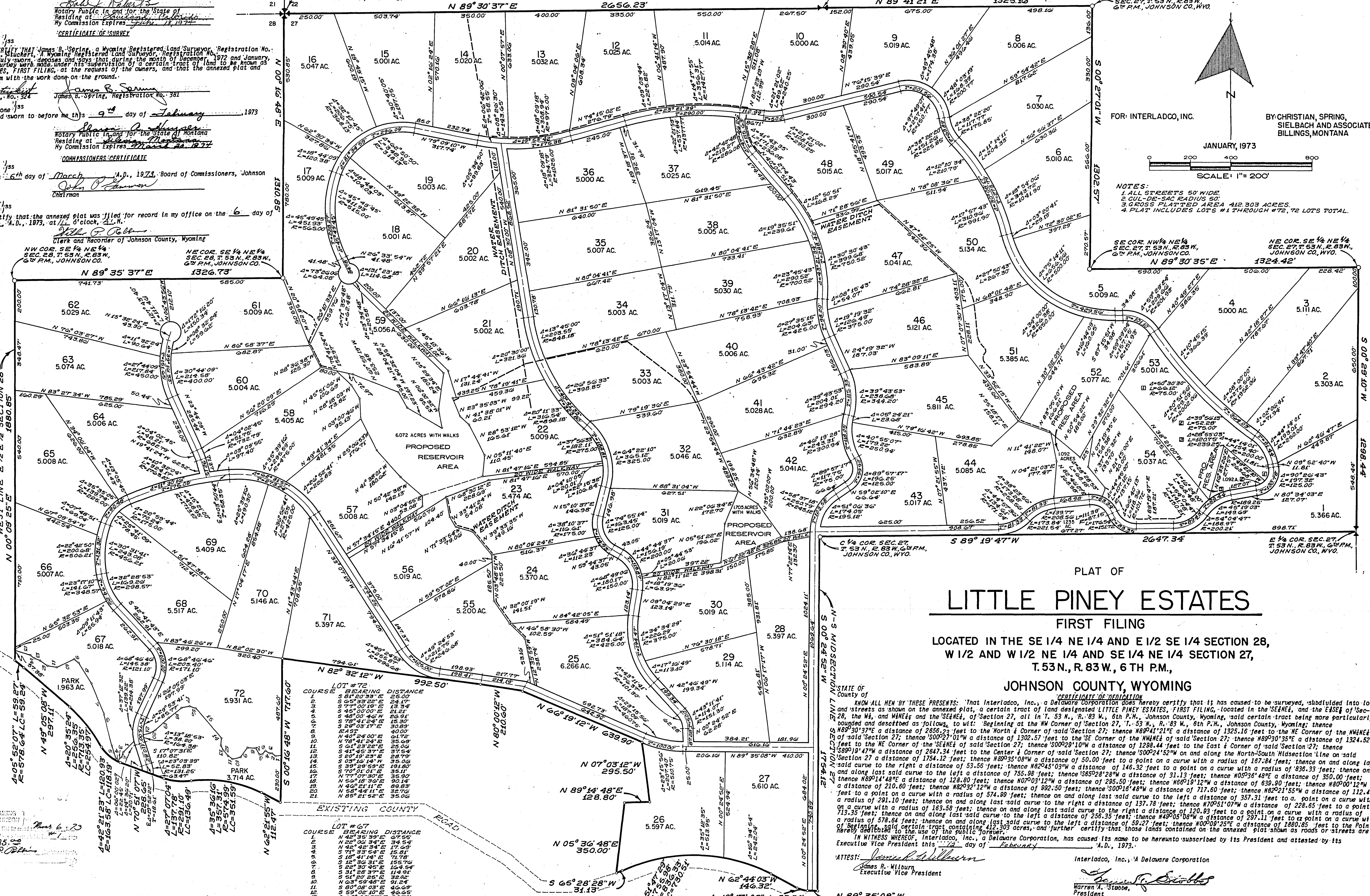
FOR: INTERLADDO, INC. BY: CHRISTIAN, SPRING, SIELBACH AND ASSOCIATES BILLINGS, MONTANA

JANUARY, 1973
SCALE: 1" = 200'

NOTES:
1. ALL STREETS 50' WIDE.
2. CUL-DE-SAC RADIUS 50'.
3. 2025 PLATTED AREA 412.303 ACRES.
4. PLAT INCLUDES LOTS #1 THROUGH #72, 72 LOTS TOTAL.

SE COR. NW 1/4 NE 1/4
SEC. 27, T. 53 N., R. 83 W.,
6TH PM, JOHNSON CO.,
WYOMING.
N 89° 30' 35" E 1324.42'

NE COR. SE 1/4 NE 1/4
SEC. 27, T. 53 N., R. 83 W.,
6TH PM, JOHNSON CO., WYO.
N 89° 30' 35" E 1324.42'



LITTLE PINEY ESTATES

FIRST FILING
LOCATED IN THE SE 1/4 NE 1/4 AND E 1/2 SE 1/4 SECTION 28,
W 1/2 AND W 1/2 NE 1/4 AND SE 1/4 NE 1/4 SECTION 27,
T. 53 N., R. 83 W., 6TH PM.,
JOHNSON COUNTY, WYOMING

STATE OF Wyoming
County of Johnson
KNOW ALL MEN BY THESE PRESENTS: That Interladdo, Inc., a Delaware Corporation does hereby certify that it has caused to be surveyed, subdivided into lots and streets as shown on the annexed plat, a certain tract of land designated LITTLE PINEY ESTATES, FIRST FILING, located in the SE 1/4 NE 1/4 and the E 1/2 SE 1/4 of Sec. 28, the NW 1/2 and the SE 1/4 of Section 27, all in T. 53 N., R. 83 W., 6th P.M., Johnson County, Wyoming, said certain tract being more particularly bounded and described as follows, to wit: Beginning at the NW Corner of said Section 27, T. 53 N., R. 83 W., 6th P.M., Johnson County, Wyoming; thence N 89° 30' 37" E a distance of 2858.22 feet to the North 1/4 Corner of said Section 27; thence N 89° 41' 21" E a distance of 1325.16 feet to the NE Corner of said Section 27; thence S 00° 27' 01" W a distance of 1302.57 feet to the SE Corner of the NW 1/4 of said Section 27; thence N 89° 30' 35" E a distance of 1324.52 feet to the NE Corner of the SE 1/4 of said Section 27; thence S 00° 29' 10" W a distance of 1298.44 feet to the East 1/2 Corner of said Section 27; thence S 89° 19' 47" W a distance of 2647.34 feet to the Center 1/4 Corner of said Section 27; thence S 00° 24' 52" W on and along the North-South Midsection Line on said said curve to the right a distance of 53.56 feet; thence N 82° 45' 03" W a distance of 146.32 feet to a point on a curve with a radius of 838.33 feet; thence on and along last said curve to the left a distance of 755.98 feet; thence S 85° 28' 28" W a distance of 31.13 feet; thence N 05° 36' 48" E a distance of 350.00 feet; thence N 89° 14' 48" E a distance of 128.80 feet; thence N 07° 03' 12" W a distance of 295.50 feet; thence N 62° 44' 03" W a distance of 639.90 feet; thence N 80° 00' 12" W a distance of 210.80 feet; thence N 82° 32' 12" W a distance of 892.50 feet; thence S 00° 16' 48" W a distance of 717.60 feet; thence N 82° 21' 55" W a distance of 112.47 feet to a point on a curve with a radius of 574.99 feet; thence on and along last said curve to the left a distance of 357.31 feet to a point on a curve with a radius of 201.10 feet; thence on and along last said curve to the right a distance of 137.78 feet; thence N 07° 51' 07" W a distance of 228.65 feet to a point on a curve with a radius of 133.58 feet; thence on and along last said curve to the right a distance of 256.35 feet; thence N 89° 05' 08" W a distance of 297.11 feet to a point on a curve with a radius of 578.64 feet; thence on and along last said curve to the left a distance of 69.27 feet; thence N 00° 09' 27" E a distance of 2800.85 feet to the Point Hereby described to the use of the public for a road or street.

IN WITNESS WHEREOF: Interladdo, Inc., a Delaware Corporation, has caused its name to be hereunto subscribed by its President and attested by its Executive Vice President this 12th day of February, A.D., 1973.

ATTEST: *James A. Wilburn* Interladdo, Inc., A Delaware Corporation
Executive Vice President
Warren A. Stobbe
President

LOT #72

COURSE	BEARING	DISTANCE
1	N 89° 30' 37" E	25.00
2	N 89° 30' 37" E	503.74
3	N 89° 30' 37" E	350.00
4	N 89° 30' 37" E	400.00
5	N 89° 30' 37" E	335.00
6	N 89° 30' 37" E	550.00
7	N 89° 30' 37" E	267.50
8	N 89° 30' 37" E	162.00
9	N 89° 30' 37" E	300.00
10	N 89° 30' 37" E	300.00
11	N 89° 30' 37" E	300.00
12	N 89° 30' 37" E	300.00
13	N 89° 30' 37" E	300.00
14	N 89° 30' 37" E	300.00
15	N 89° 30' 37" E	300.00
16	N 89° 30' 37" E	300.00
17	N 89° 30' 37" E	300.00
18	N 89° 30' 37" E	300.00
19	N 89° 30' 37" E	300.00
20	N 89° 30' 37" E	300.00
21	N 89° 30' 37" E	300.00
22	N 89° 30' 37" E	300.00
23	N 89° 30' 37" E	300.00
24	N 89° 30' 37" E	300.00
25	N 89° 30' 37" E	300.00
26	N 89° 30' 37" E	300.00
27	N 89° 30' 37" E	300.00
28	N 89° 30' 37" E	300.00
29	N 89° 30' 37" E	300.00
30	N 89° 30' 37" E	300.00
31	N 89° 30' 37" E	300.00
32	N 89° 30' 37" E	300.00
33	N 89° 30' 37" E	300.00
34	N 89° 30' 37" E	300.00
35	N 89° 30' 37" E	300.00
36	N 89° 30' 37" E	300.00
37	N 89° 30' 37" E	300.00
38	N 89° 30' 37" E	300.00
39	N 89° 30' 37" E	300.00
40	N 89° 30' 37" E	300.00
41	N 89° 30' 37" E	300.00
42	N 89° 30' 37" E	300.00
43	N 89° 30' 37" E	300.00
44	N 89° 30' 37" E	300.00
45	N 89° 30' 37" E	300.00
46	N 89° 30' 37" E	300.00
47	N 89° 30' 37" E	300.00
48	N 89° 30' 37" E	300.00
49	N 89° 30' 37" E	300.00
50	N 89° 30' 37" E	300.00
51	N 89° 30' 37" E	300.00
52	N 89° 30' 37" E	300.00
53	N 89° 30' 37" E	300.00
54	N 89° 30' 37" E	300.00
55	N 89° 30' 37" E	300.00
56	N 89° 30' 37" E	300.00
57	N 89° 30' 37" E	300.00
58	N 89° 30' 37" E	300.00
59	N 89° 30' 37" E	300.00
60	N 89° 30' 37" E	300.00
61	N 89° 30' 37" E	300.00
62	N 89° 30' 37" E	300.00
63	N 89° 30' 37" E	300.00
64	N 89° 30' 37" E	300.00
65	N 89° 30' 37" E	300.00
66	N 89° 30' 37" E	300.00
67	N 89° 30' 37" E	300.00
68	N 89° 30' 37" E	300.00
69	N 89° 30' 37" E	300.00
70	N 89° 30' 37" E	300.00
71	N 89° 30' 37" E	300.00
72	N 89° 30' 37" E	300.00

LOT #67

COURSE	BEARING	DISTANCE
1	N 89° 30' 37" E	25.00
2	N 89° 30' 37" E	503.74
3	N 89° 30' 37" E	350.00
4	N 89° 30' 37" E	400.00
5	N 89° 30' 37" E	335.00
6	N 89° 30' 37" E	550.00
7	N 89° 30' 37" E	267.50
8	N 89° 30' 37" E	162.00
9	N 89° 30' 37" E	300.00
10	N 89° 30' 37" E	300.00
11	N 89° 30' 37" E	300.00
12	N 89° 30' 37" E	300.00
13	N 89° 30' 37" E	300.00
14	N 89° 30' 37" E	300.00
15	N 89° 30' 37" E	300.00
16	N 89° 30' 37" E	300.00
17	N 89° 30' 37" E	300.00
18	N 89° 30' 37" E	300.00
19	N 89° 30' 37" E	300.00
20	N 89° 30' 37" E	300.00
21	N 89° 30' 37" E	300.00
22	N 89° 30' 37" E	300.00
23	N 89° 30' 37" E	300.00
24	N 89° 30' 37" E	300.00
25	N 89° 30' 37" E	300.00
26	N 89° 30' 37" E	300.00
27	N 89° 30' 37" E	300.00
28	N 89° 30' 37" E	300.00
29	N 89° 30' 37" E	300.00
30	N 89° 30' 37" E	300.00
31	N 89° 30' 37" E	300.00
32	N 89° 30' 37" E	300.00
33	N 89° 30' 37" E	300.00
34	N 89° 30' 37" E	300.00
35	N 89° 30' 37" E	300.00
36	N 89° 30' 37" E	300.00
37	N 89° 30' 37" E	300.00
38	N 89° 30' 37" E	300.00
39	N 89° 30' 37" E	300.00
40	N 89° 30' 37" E	300.00
41	N 89° 30' 37" E	300.00
42	N 89° 30' 37" E	300.00
43	N 89° 30' 37" E	300.00
44	N 89° 30' 37" E	300.00
45	N 89° 30' 37" E	300.00
46	N 89° 30' 37" E	300.00
47	N 89° 30' 37" E	300.00
48	N 89° 30' 37" E	300.00
49	N 89° 30' 37" E	300.00
50	N 89° 30' 37" E	300.00
51	N 89° 30' 37" E	300.00
52	N 89° 30' 37" E	300.00
53	N 89° 30' 37" E	300.00
54	N 89° 30' 37" E	300.00
55	N 89° 30' 37" E	300.00
56	N 89° 30' 37" E	300.00
57	N 89° 30' 37" E	300.00
58	N 89° 30' 37" E	300.00
59	N 89° 30' 37" E	300.00
60	N 89° 30' 37" E	300.00
61	N 89° 30' 37" E	300.00
62	N 89° 30' 37" E	300.00
63	N 89° 30' 37" E	300.00
64	N 89° 30' 37" E	300.00
65	N 89° 30' 37" E	300.00
66	N 89° 30' 37" E	300.00
67	N 89° 30' 37" E	300.00
68	N 89° 30' 37" E	300.00
69	N 89° 30' 37" E	300.00
70	N 89° 30' 37" E	300.00
71	N 89° 30' 37" E	300.00
72	N 89° 30' 37" E	300.00

88697
STATE OF WYOMING
COUNTY OF JOHNSON
I hereby certify that the annexed plat was filed for record in my office on the 6th day of March, A.D., 1973, at 11 o'clock, A.M.