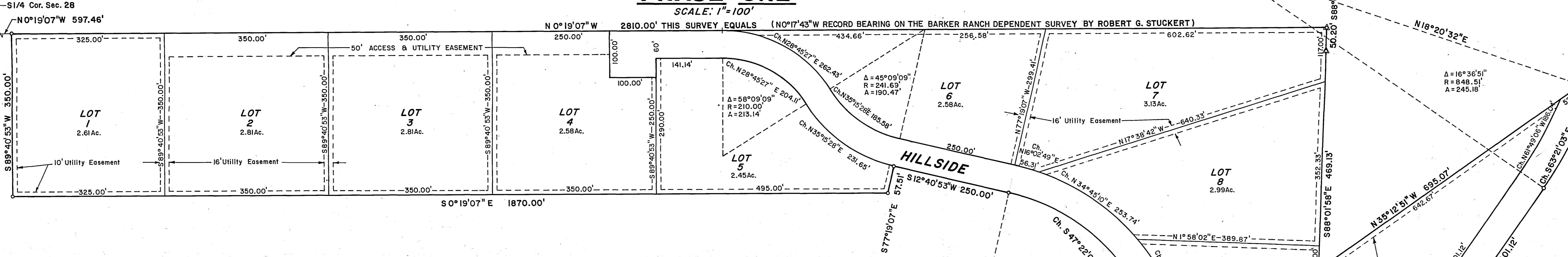


NO PROPOSED PUBLIC SEWAGE DISPOSAL SYSTEM
 NO PROPOSED PUBLIC DOMESTIC WATER SOURCE
 NO PUBLIC MAINTENANCE OF STREETS AND ROADS

"MOUNTAIN - RIDGE - ESTATES" PHASE ONE

SCALE: 1"=100'



LEGEND

- △ FOUND BRASS CAP
- FOUND 5/8" REBAR WITH ALUMINUM CAP
- SET 5/8" REBAR WITH ALUMINUM CAP
- ⊕ SET 5/8" REBAR WITH ALUMINUM CAP AT ALL LOT CORNERS, R.C.'S & R.T.'S

MOUNTAIN - RIDGE - ESTATES

ALL THAT PORTION OF THE E1/2 OF SECTION 28, T.51N., R.82W. OF THE 6th R.M., JOHNSON COUNTY, WYOMING, MORE PARTICULARLY DESCRIBED AS FOLLOWS:
 BEGINNING AT A POINT WHICH BEARS N0°19'07"W A DISTANCE OF 597.46 FEET FROM THE S1/4 CORNER OF SAID SECTION 28, SAID POINT OF BEGINNING ALSO BEING ON THE WEST BOUNDARY OF SAID E1/2 OF SECTION 28;
 THENCE, ALONG THE SAID WEST BOUNDARY OF SAID E1/2 OF SECTION 28 N0°19'07"W A DISTANCE OF 2810.00' TO A POINT ON THE NORTH BOUNDARY LINE OF THE OLD FORT MCKINNEY MILITARY RESERVATION;
 THENCE, ALONG THE SAID NORTH FORT BOUNDARY S88°01'58"E A DISTANCE OF 519.33' FEET TO A POINT;
 THENCE, N35°12'51"W A DISTANCE OF 695.07 FEET TO A POINT ON THE CENTERLINE OF COUNTY ROAD No. 91.5;
 THENCE, N18°20'32"E A DISTANCE OF 30.00 FEET TO A POINT ON THE EAST RIGHT OF WAY LINE OF SAID COUNTY ROAD No. 91.5;
 THENCE, ALONG THE EAST BOUNDARY OF SAID COUNTY ROAD ALONG A CURVE TO THE RIGHT AND WHOSE CENTRAL ANGLE IS 42°54'13" AND WHOSE LONG CHORD BEARS S76°29'43"E A DISTANCE OF 486.03 FEET TO THE END OF CURVE;
 THENCE, S55°02'37"E A DISTANCE OF 401.12 FEET TO THE POINT OF CURVE;
 THENCE, ALONG SAID CURVE TO THE LEFT AND WHOSE RADIUS IS 664.49 FEET AND WHOSE CENTRAL ANGLE IS 42°54'13" AND WHOSE LONG CHORD BEARS S76°29'43"E A DISTANCE OF 486.03 FEET TO THE END OF CURVE;
 THENCE, N82°03'10"E A DISTANCE OF 210.00' FEET TO A POINT;
 THENCE, S7°56'50"E A DISTANCE OF 417.43 FEET TO A POINT;
 THENCE, S82°03'10"W A DISTANCE OF 715.37 FEET TO THE POINT OF CURVE;
 THENCE, ALONG SAID CURVE TO THE LEFT AND WHOSE RADIUS IS 419.59' FEET AND WHOSE CENTRAL ANGLE IS 69°22'17" AND WHOSE LONG CHORD BEARS S47°22'01"W A DISTANCE OF 477.56 FEET TO THE END OF CURVE;
 THENCE, S12°40'53"W A DISTANCE OF 250.00 FEET TO A POINT;
 THENCE, S77°19'07"E A DISTANCE OF 57.51 FEET TO A POINT;
 THENCE, S0°19'07"E A DISTANCE OF 1870.00 FEET TO A POINT;
 THENCE, S89°40'53"W A DISTANCE OF 350.00 FEET TO THE POINT OF BEGINNING.

THE ABOVE DESCRIBED PARCEL OF LAND CONTAINS 37.09 ACRES, MORE OR LESS AS APPEARS ON THIS PLAT, IS WITH THE FREE CONSENT, AND IN ACCORDANCE WITH THE DESIRES OF THE UNDERSIGNED OWNER AND PROPRIETOR WHO HAVE BY THESE PRESENTS LAID OUT AND SURVEYED AS MOUNTAIN RIDGE ESTATES PHASE ONE. THE UNDERSIGNED OWNER DOES HEREBY DEDICATE AND CONVEY, TO AND FOR PUBLIC USE FOREVER HEREAFTER THE STREETS AS ARE LAID OUT AND DESIGNATED ON THIS PLAT. THE DEDICATION OF THE STREETS OR ROADS ON THIS PLAT IN NO WAY OBLIGATES THE JOHNSON COUNTY COMMISSIONERS TO MAINTAIN SUCH ROADS OR ACCEPT THEM AS COUNTY ROADS NOR DOES IT RELIEVE THE SUBDIVIDER OF THE OBLIGATION TO CONSTRUCT SUCH STREETS AND ROADS ACCORDING TO THE JOHNSON COUNTY ROAD STANDARDS AND DOES ALSO RESERVE PERPETUAL EASEMENTS FOR ACCESS AND UTILITY FACILITIES (INCLUDING TELEVISION CABLES) AS ARE LAID OUT AND DESIGNATED ON THIS PLAT OR DESCRIBED IN THE DECLARATION OF PROTECTIVE AND RESTRICTIVE COVENANTS FOR MOUNTAIN RIDGE ESTATES PHASE ONE.

THE OWNER DOES HEREBY RELEASE AND WAIVE ALL RIGHTS UNDER OF AND BY VIRTUE OF THE HOMESTEAD EXEMPTION LAWS OF THE STATE OF WYOMING.
 WITNESS MY HAND THIS 8 DAY OF June, 1978.

MARGARET M. BARKER *[Signature]*

STATE OF WYOMING)
 COUNTY OF JOHNSON) ss

THE FOREGOING INSTRUMENT WAS ACKNOWLEDGED BEFORE ME BY MARGARET M. BARKER THIS 8 DAY OF June, 1978.

WITNESS MY HAND AND OFFICIAL SEAL *[Signature]* NOTARY PUBLIC
 MY COMMISSION EXPIRES Jan 2, 1979

STATE OF WYOMING)
 COUNTY OF JOHNSON) ss

I, JEROME M. MARK A DULY REGISTERED LAND SURVEYOR IN THE STATE OF WYOMING DO HEREBY CERTIFY THAT THIS PLAT OF MOUNTAIN RIDGE ESTATES PHASE ONE TRULY AND CORRECTLY REPRESENTS THE RESULTS OF A SURVEY MADE BY ME OR UNDER MY DIRECT SUPERVISION.

[Signature]
 JEROME M. MARK WYO. RE. & L.S. No.551

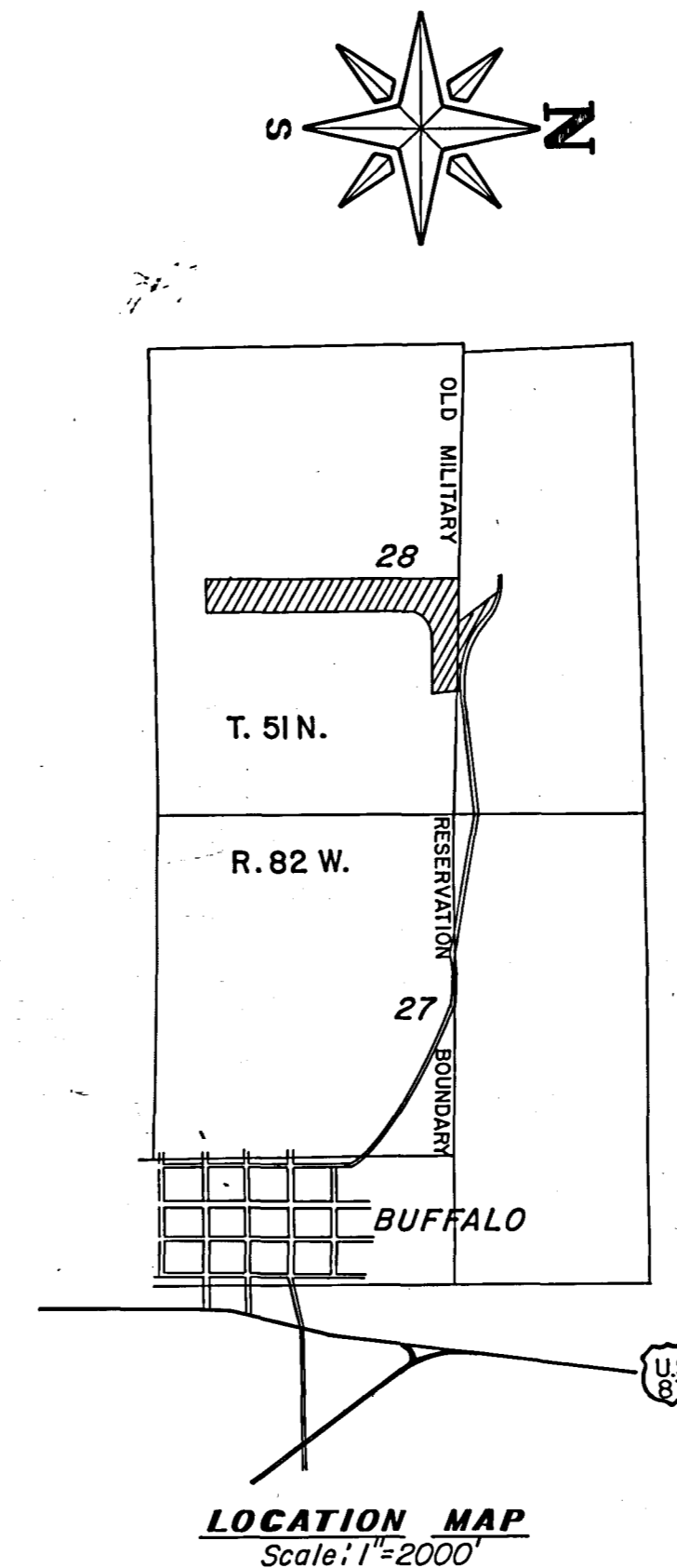
APPROVALS

APPROVED BY THE JOHNSON COUNTY PLANNING COMMISSION THIS 28 DAY OF April, A.D. 1978.
 ATTEST: *[Signature]* *[Signature]*
 CLERK OF THE PLANNING COMMISSION CHAIRMAN OF THE PLANNING COMMISSION

APPROVED BY THE JOHNSON COUNTY BOARD OF COUNTY COMMISSIONERS THIS 6th DAY OF JUNE, A.D. 1978.
 ATTEST: *[Signature]* *[Signature]*
 CLERK OF THE BOARD CHAIRMAN

APPROVED BY THE CITY OF BUFFALO CITY COUNCIL THIS 6th DAY OF JUNE, A.D. 1978.
 ATTEST: *[Signature]* *[Signature]*
 CITY CLERK MAYOR

THE CITY OF BUFFALO PLANNING COMMISSION HEREBY RECOMMENDS APPROVAL OF THIS PLAT ON THIS 22nd DAY OF MAY, 1978.
 ATTEST: *[Signature]* *[Signature]*
 SECRETARY CHAIRMAN



STATE OF WYOMING)
 COUNTY OF JOHNSON) ss
 THIS INSTRUMENT WAS FILED FOR THE RECORD ON June 8, 1978 at 9:30 A.M.
 AND WAS DULY RECORDED IN BOOK 20 PAGE 20 FEE \$ 50.00
 REGISTER OF DEEDS *[Signature]* BY DEPUTY
 PROTECTIVE COVENANTS ARE RECORDED IN BOOK 86A-17 PAGE 438

PREPARED BY
CENTENNIAL ENGINEERING & RESEARCH, INC.
 SHERIDAN, WYOMING
 DRAWN BY: JEROLD L. VIGIL
 APRIL 10, 1978