

**RESUBDIVISION OF A PORTION OF LOT 3,
BLOCK 1, OF THE BUFFALO WEST ADDITION
TO THE CITY OF BUFFALO, WYOMING**

The undersigned Owner and Proprietor of the above described lands located in Lot 3 of the Buffalo West Addition to the City of Buffalo, Wyoming, has caused the same to be resubdivided in the manner as shown on this plat, which resubdivision shall be known as the RESUBDIVISION OF A PORTION OF LOT 3, BLOCK 1, OF THE BUFFALO WEST ADDITION TO THE CITY OF BUFFALO, WYOMING.

Said Plat is proposed and offered with free consent and in accordance with the desires of the undersigned Owner and Proprietor.

Streets as shown on this Plat are hereby dedicated for Public Use and easements shown on this Plat are hereby reserved for the use as laid out and designated on this Plat.

IN TESTIMONY WHEREOF, Burton Enterprises, Inc. has caused these present to be signed this 10th day of DECEMBER, 2004.

Kenneth Burton
Kenneth Burton
Burton Enterprises, Inc.

Michelle Burton
Michelle Burton
Burton Enterprises, Inc.

STATE OF WYOMING
COUNTY OF JOHNSON

The foregoing instrument was acknowledged before me by Kenneth Burton and Michelle Burton, Burton Enterprises, Inc., this 10th day of DECEMBER, 2004.

Witness my hand and official seal.



Keith A. Neustel
Notary Public

My Commission Expires: 5/14/2006

APPROVALS

The City of Buffalo Planning Commission hereby recommends approval of this plat on this 28th day of December, 2004.

Donald P. Swan
Chairperson

[Signature]
Secretary

Approved by the City of Buffalo, Wyoming, this 4th day of January, 2005

Bruce Hepp
Mayor

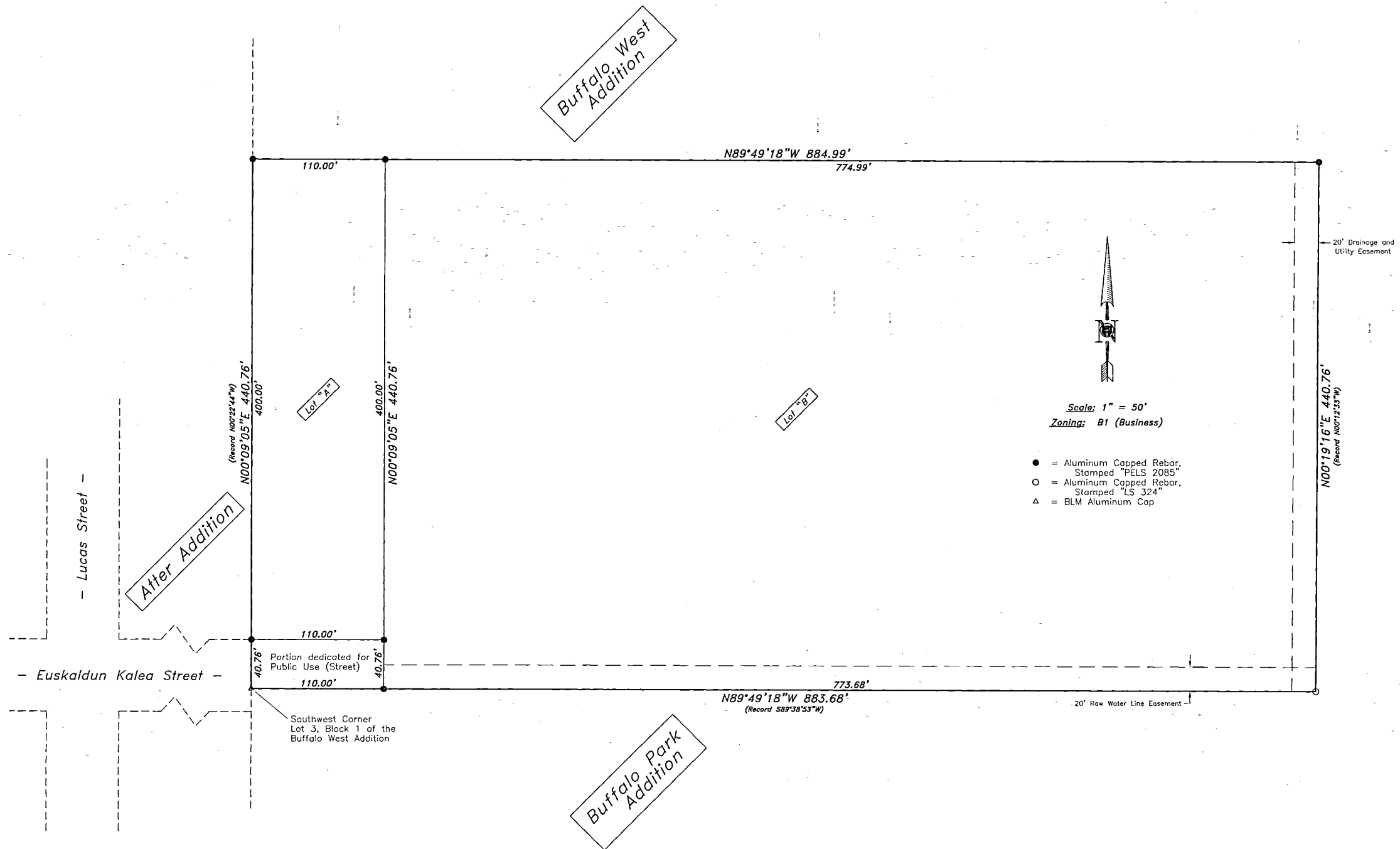
Kay J. Hunt
Attest: City Clerk

State of Wyoming)
)ss
County of Johnson) **034231**

This instrument was filed for record on the 5th day of January, 2005 at 10:00 A.M. and was duly recorded in Plat Book Hanging File, page 250.

Janelan Deputy
Register of Deeds

\$50.00



Scale: 1" = 50'
Zoning: B1 (Business)

● = Aluminum Capped Rebar, Stamped "FELS 2085"
○ = Aluminum Capped Rebar, Stamped "LS 324"
▲ = BLM Aluminum Cap

CERTIFICATE OF SURVEYOR

STATE OF WYOMING)
)ss
COUNTY OF JOHNSON)

I, **Keith A. Neustel**, a duly Registered Professional Land Surveyor in the State of Wyoming do hereby certify that this certificate is based on existing deeds of record, existing plats of record and on the results of a field survey conducted under my direction as a Registered Professional Land Surveyor.



GRIZZLY ENGINEERING
CONSULTING ENGINEERS and LAND SURVEYORS
P.O. BOX 1004
BUFFALO, WYOMING 82834

Date Drawn: 12/09/04
Drawn By: FPJ
Project No.: B04-137

Scale: 1" = 50'
Checked By: KAN
File Name: B04-137.DWG

Final Plat

Prepared for:
Ken Burton
PO Box 306
Buffalo, WY 82834

FINAL PLAT
Resubdivision of a Portion of
Lot 3, Block 1, of the Buffalo West Addition
to the City of Buffalo, Wyoming

No.	DATE	REVISION DESCRIPTION	BY