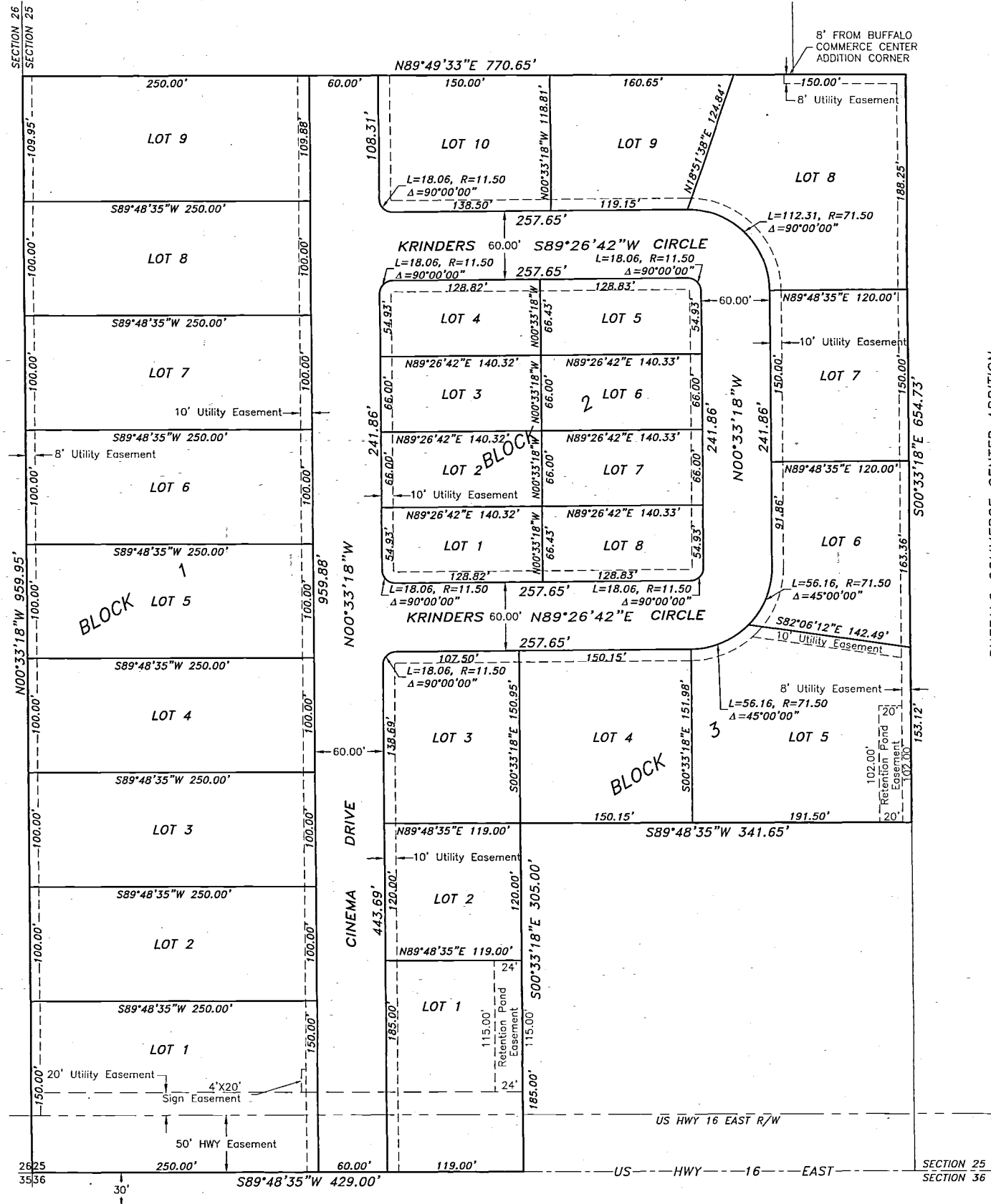


SUNSET BUSINESS PARK ADDITION



SCALE: 1" = 60'

Total Area = 14.59 ac±
 Total Number of Lots = 27
 Zoning = B-1 Business District

Aluminum Capped Rebar
 (Stamped PELS 2085)
 set at all Lot Corners.

The undersigned Owner and Proprietor of the Sunset Business Park Addition to the City of Buffalo, Wyoming, has caused said Sunset Business Park Addition to be subdivided in the manner as shown on this Plat.

Said Plat is proposed and offered with free consent and in accordance with the desires of the undersigned Owner and Proprietor.

All streets as shown on this Plat are hereby dedicated for public use.

All easements shown on this Plat are hereby dedicated for the purpose as stated.

Utility easements shown on this Plat include pipes and ditches for conveyance of surface runoff.

IN TESTIMONY WHEREOF: Buffalo Sunset, LLC, has caused these present to be signed this 24th day of July, 2007.

Elizabeth J. Kirven
 Buffalo Sunset, LLC
 Elizabeth J. Kirven
 Managing Member

STATE OF WYOMING)
) ss
 COUNTY OF Johnson)

The foregoing instrument was acknowledged before me by Elizabeth J. Kirven, Managing Member, Buffalo Sunset, LLC, who acknowledged said instrument to be her free act and deed this 24th day of July, 2007.

Witness my hand and official seal.



Keith A. Neustel
 Notary Public

My Commission Expires: 9/27/10

APPROVALS

Approved by the City of Buffalo Planning Commission this 25th day of July, 2007.

Heather J. Reinmann
 Chairperson

[Signature]
 Attest: Secretary

Approved by the Buffalo City Council this 4th day of September, 2007.

[Signature]
 Mayor

[Signature]
 Attest: City Clerk

STATE OF WYOMING)
) ss 076493
 COUNTY OF JOHNSON)

This instrument was filed for record on the 3rd day of March, 2008, at 2:30 P.M. and was duly recorded on Hanging File page 299.

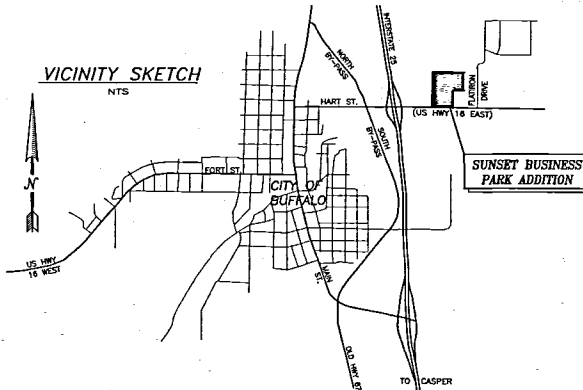
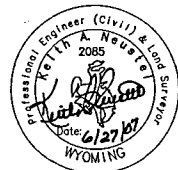
Fee: \$50⁰⁰

Jane Carr
 Deputy
 Register of Deeds

General Declaration of Commercial Conditions, Covenants, and Restrictions are recorded in Book 86A-65, pages 495-512.

CERTIFICATE OF SURVEYOR

I, Keith A. Neustel, a duly Registered Professional Land Surveyor in the State of Wyoming, do hereby certify that this Final Plat of SUNSET BUSINESS PARK ADDITION is based on the results of a field survey, conducted by Fred Janssen under my direction, and accurately represents conditions as found in the field.



GRIZZLY ENGINEERING
 CONSULTING ENGINEERS and LAND SURVEYORS
 P.O. BOX 1004
 BUFFALO, WYOMING 82834
 307/684-7029
 Date Drawn: 05/11/2007
 Drawn By: PJJ
 Project No.: B06-046
 Scale: See Drawing
 Checked By: KAN
 File Name: 06-046 Final.dwg
 No. DATE REVISION DESCRIPTION BY

Final Plat
 Prepared for:
 Buffalo Sunset, LLC
 c/o Tim Kirven
 PO Box 640
 Buffalo, WY 82834

SUNSET BUSINESS PARK ADDITION
 BUFFALO, WYOMING

Sunset Business Park Addition 322