

TRAVEL PLAZA ADDITION

The above or foregoing addition of the following described real estate, to wit:
 Tracts of land located in the SW1/4NW1/4NE1/4 of Section 35, T51N, R82W, of the 6th P.M., Johnson County, Wyoming, said tracts of land being more particularly described as follows:

TRACT NO. 1:

Commencing at the southwest corner of Block 2 of the Lusher Addition to the City of Buffalo, Wyoming, as filed with the Clerk of Johnson County, Wyoming, in Plat Book 2, page 55, said southwest corner of said Block 2 of said Lusher Addition being the true point of beginning of said Tract No. 1;
 thence S89°38'26"W a distance of 63.92 feet to a point;
 thence N20°31'48"W a distance of 486.29 feet to a point;
 thence N89°27'56"E a distance of 63.85 feet to a point;
 thence S20°31'48"E a distance of 486.50 feet to the true point of beginning of said Tract No. 1.
 Said Tract No. 1 containing 0.67 acres, more or less.

TRACT NO. 2:

Commencing at the southeasterly most corner of Lot 3, Block 1, of the Lusher Addition to the City of Buffalo, Wyoming, as filed with the Clerk of Johnson County, Wyoming, in Plat Book 2, page 55, said southeasterly most corner of said Lot 3 of said Block 1 of said Lusher Addition being the true point of beginning of said Tract No. 2;
 thence N20°32'24"W a distance of 262.60 feet to a point;
 thence N69°27'36"E a distance of 50.00 feet to a point;
 thence N20°32'24"W a distance of 166.20 feet to a point;
 thence N89°21'28"E a distance of 26.68 feet to a point;
 thence N89°27'56"E a distance of 37.77 feet to a point;
 thence S20°31'48"E a distance of 406.80 feet to a point;
 thence S69°27'36"W a distance of 110.51 feet to the true point of beginning of said Tract No. 2.
 Said Tract No. 2 containing 0.88 acres, more or less.

Said plat is proposed and offered with free consent and in accordance with the desires of the undersigned owners and proprietors and, the undersigned owners and proprietors do hereby release and waive all rights under and by virtue of the homestead exemption laws of the State of Wyoming.

IN TESTIMONY WHEREOF: Don Seals Enterprises, Inc., a Wyoming Corporation has caused these present to be signed this 26th day of Nov., 2001.

Don Seals
 Don Seals Enterprises, Inc.
 Donald M. Seals, President

STATE OF WYOMING)
)ss
 COUNTY OF JOHNSON)

The foregoing instrument was acknowledged before me by Donald M. Seals this 26th day of Nov., 2001.

Witness my hand and seal.



Keith A. Neustel
 Notary Public

My Commission Expires: 9/27/02

IN TESTIMONY WHEREOF: Shawn G. Welsh has caused these present to be signed this 20th day of Nov., 2001.

Shawn G. Welsh
 Shawn G. Welsh

STATE OF WYOMING)
)ss
 COUNTY OF JOHNSON)

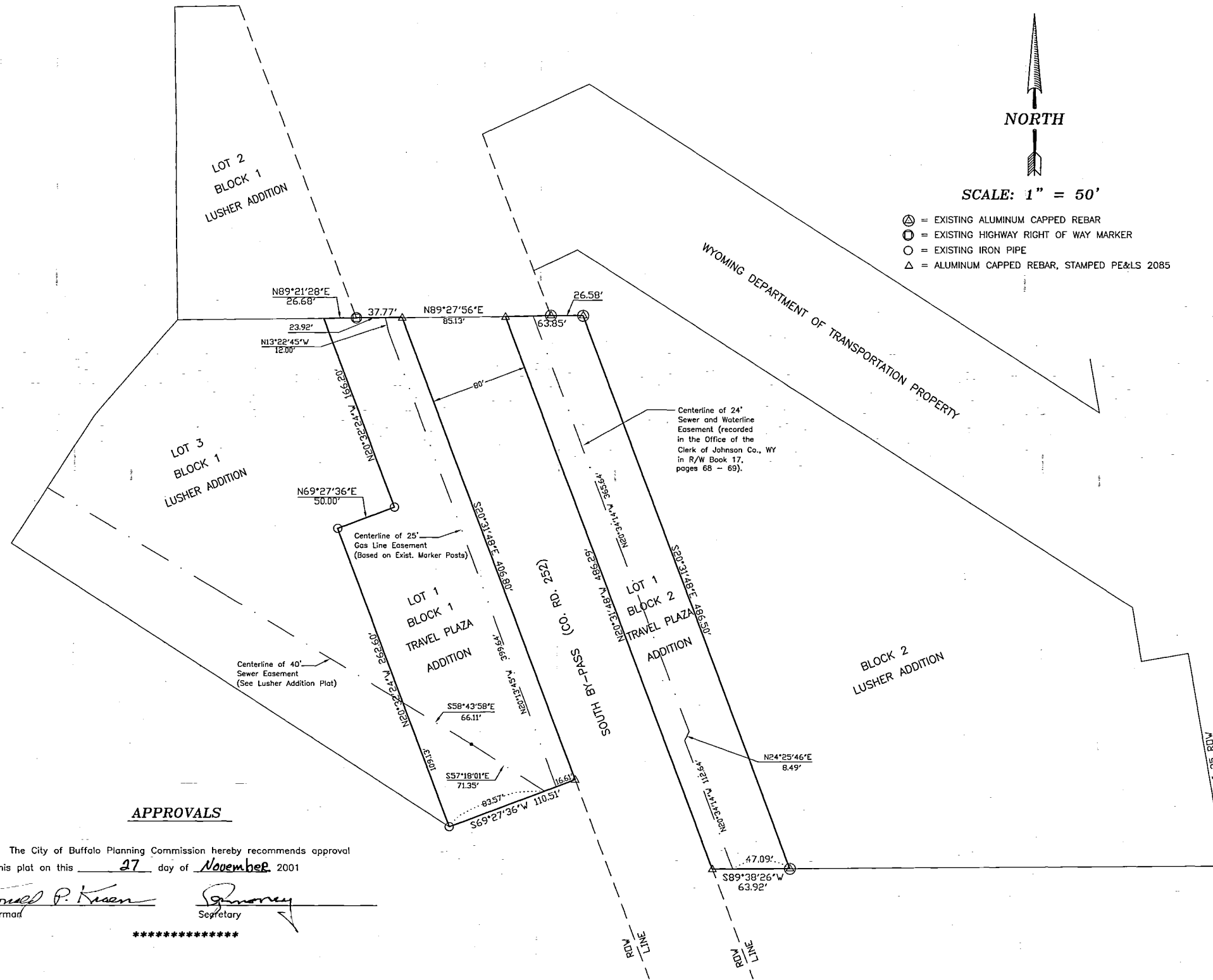
The foregoing instrument was acknowledged before me by Shawn G. Welsh this 20th day of Nov., 2001.

Witness my hand and seal.



Keith A. Neustel
 Notary Public

My Commission Expires: 9/27/02



APPROVALS

The City of Buffalo Planning Commission hereby recommends approval of this plat on this 27 day of November, 2001

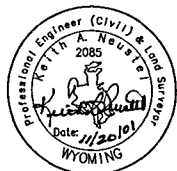
Donald P. Krasen Chairman
Shirley Secretary

Approved by the Buffalo City Council this 18th day of December, 2001.

Mike R. Joffe Mayor
Kay A. Wild Attest: City Clerk

CERTIFICATE OF SURVEYOR

I, Keith A. Neustel, a duly registered Land Surveyor in the State of Wyoming, do hereby certify that this plat of the Travel Plaza Addition to the City of Buffalo, Wyoming, was prepared from notes made during an actual field survey, by Terry W. Janssen, conducted under my direct supervision and represents the conditions as found on the ground and on the Plat of the Lusher Addition to the City of Buffalo, Wyoming, as filed with the Clerk of Johnson County, Wyoming, in Plat Book 2, page 55.



ZONING

All Lots and Blocks shall be zoned M-1 Industrial District.

State of Wyoming)
 County of Johnson)

This instrument was filed for record on the 19th day of December, 2001, at 10:15 A.M., and was duly recorded in Plat Book # 200, Page 200.
 Fee: \$ 50.00

Linda Barabart
 Register of Deeds
 By: Deputy

TRAVEL PLAZA ADDITION	
Prepared for:	
Don Seals Enterprises, Inc. P.O. Box 669 Buffalo, Wyoming 82834	Shawn G. Welsh P.O. Box 604 Buffalo, Wyoming 82834
GRIZZLY ENGINEERING CONSULTING ENGINEERS and LAND SURVEYORS	
P.O. BOX 1004 BUFFALO, WYOMING 82834	
307/684-7029	
Date Drawn: 11/15/2001	Scale: 1"=100'
Drawn By: TWJ	Checked By: KAN
Project No. B01-142 & 145 File Name: WELSHANN.DWG	