

CERTIFICATE OF SURVEY
FOR THE RIGHT-OF-WAY OF
COUNTY ROAD 11A CANAL ROAD
 LOCATED IN
 SECTION 1 OF T.51 N., R.83W.,
 SECTION 6 OF T.51 N., R.82 W.,
 SECTION 31 OF T.52 N., R.82W.,
 AND
 SECTIONS 25 AND 36 OF T.52 N., R.83 W.
 SIXTH PRINCIPAL MERIDIAN,
 JOHNSON COUNTY, WY

LEGEND

- ALIGNMENT OF CR #11A AS SURVEYED IN JUNE OF 2011
- ESTABLISHED ALIGNMENT VACATED 2011
- SECTION LINE
- MID-SECTION LINE
- ⊕ SECTION CORNER

SCALE: 1"=400'

County Road #11A
Legal Description

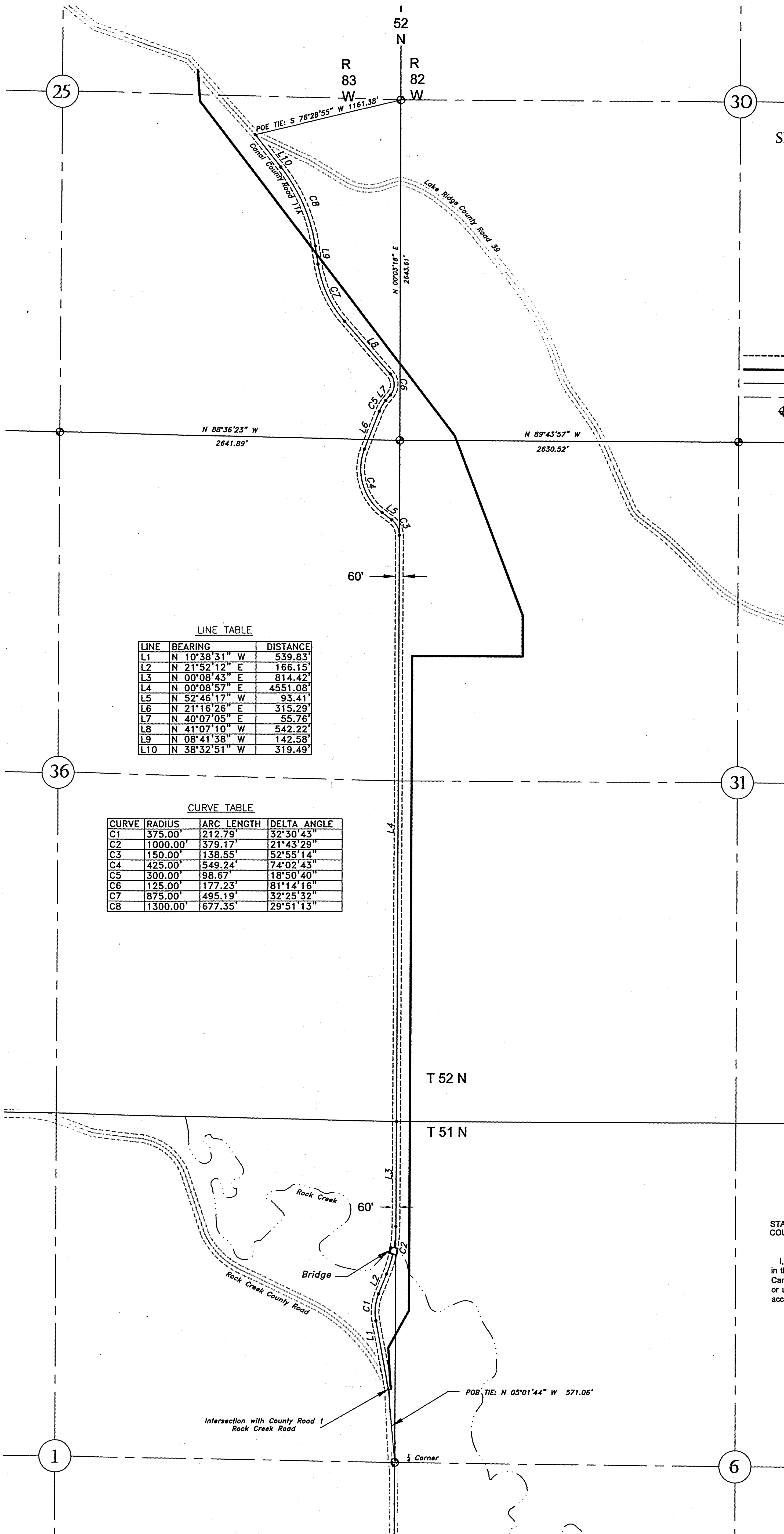
A change in a portion of county road survey #11 located in parts of Section 1 of T. 51 N., R. 83 W., Section 6 of T.52 N., R. 82 W., Sections 30 and 31 of T. 52 N., R. 82 W., and Sections 25 and 36 of T. 52 N., R. 83 W., all of the Sixth Principal Meridian, to change the record to match the road as it runs on the ground, said road being 60 feet wide, 30 feet on each side of the centerline. The centerline of the portion to be changed as it existed on the ground in June of 2011 being more particularly described as follows:
 Beginning at a point on the centerline of County Road #1 Rock Creek Road, said point lying N 05°01'44" W a distance of 571.06 feet from the 1/4 corner between said Section 6 and Section 1;
 Thence N 10°38'31" W a distance of 539.83 feet;
 Thence along a curve to the right with a radius of 375.00', an arc length of 212.79', and a delta angle of 32°30'43";
 Thence N 21°52'12" E a distance of 166.15 feet;
 Thence along a curve to the left with a radius of 1000.00', an arc length of 379.17', and a delta angle of 21°43'29";
 Thence N 00°08'43" E a distance of 814.42 feet;
 Thence N 00°08'57" E a distance of 4551.08 feet;
 Thence along a curve to the left with a radius of 150.00', an arc length of 138.55', and a delta angle of 52°55'14";
 Thence N 52°46'17" W a distance of 93.41 feet;
 Thence along a curve to the right with a radius of 425.00', an arc length of 549.24', and a delta angle of 74°02'43";
 Thence N 21°16'26" E a distance of 315.29 feet;
 Thence along a curve to the right with a radius of 300.00', an arc length of 98.67', and a delta angle of 18°50'40";
 Thence N 40°07'05" E a distance of 55.76 feet;
 Thence along a curve to the left with a radius of 125.00', an arc length of 177.23', and a delta angle of 81°14'16";
 Thence N 41°07'10" W a distance of 542.22 feet;
 Thence along a curve to the right with a radius of 875.00', an arc length of 495.19', and a delta angle of 32°25'32";
 Thence N 08°41'38" W a distance of 142.58 feet;
 Thence along a curve to the left with a radius of 1300.00 feet, an arc length of 677.35 feet, and a delta angle of 29°51'13";
 Thence N 38°32'51" W a distance of 319.49' feet to the point of ending of this change, said point being on the centerline of Lake Ridge County Road (County Road #39) lying S 76°28'55" W a distance of 1161.38 feet from the 1/4 corner between said Section 30 and Section 25.

LINE TABLE

LINE	BEARING	DISTANCE
L1	N 10°38'31" W	539.83'
L2	N 21°52'12" E	166.15'
L3	N 00°08'43" E	814.42'
L4	N 00°08'57" E	4551.08'
L5	N 52°46'17" W	93.41'
L6	N 21°16'26" E	315.29'
L7	N 40°07'05" E	55.76'
L8	N 41°07'10" W	542.22'
L9	N 08°41'38" W	142.58'
L10	N 38°32'51" W	319.49'

CURVE TABLE

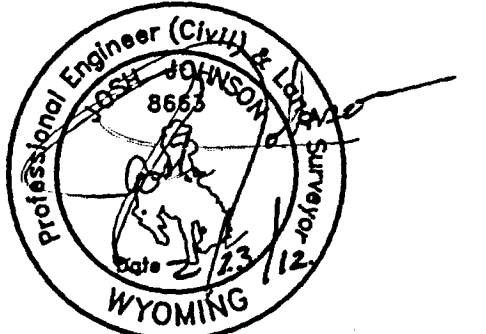
CURVE	RADIUS	ARC LENGTH	DELTA ANGLE
C1	375.00'	212.79'	32°30'43"
C2	1000.00'	379.17'	21°43'29"
C3	150.00'	138.55'	52°55'14"
C4	425.00'	549.24'	74°02'43"
C5	300.00'	98.67'	18°50'40"
C6	125.00'	177.23'	81°14'16"
C7	875.00'	495.19'	32°25'32"
C8	1300.00'	677.35'	29°51'13"



CERTIFICATE OF SURVEYOR

STATE OF WYOMING }
 COUNTY OF JOHNSON } ss

I, Josh Johnson, a duly Registered Professional Engineer and Land Surveyor in the state of Wyoming, do hereby certify that this plat of County Road #11A, Canal Road, was made from data collected during an actual field survey by me or under my direct supervision in June of 2011, and that said Canal Road is accurately represented on this plat.



CERTIFICATE OF RECORDER

STATE OF WYOMING }
 COUNTY OF JOHNSON } ss
 THIS INSTRUMENT WAS FILED FOR THE RECORD ON THE ____ DAY
 OF _____, 2011, AT _____, AND WAS
 RECORDED IN PLAT BOOK _____, PAGE _____
 FEE: \$ _____

REGISTER OF DEEDS }
 STATE OF WYOMING } ss Doc Number: 118162
 COUNTY OF JOHNSON } ss
 This instrument was filed for record on 2/13/2012 at 2:03 PM
 and was duly recorded in book: page: 365 - 365 fees: 0.00
 By *Brian M. Cress*, Deputy

SCALE: 1"=400'
 PROJECT NO.: 11-24
 DRAWING: Canal Road
 LAYOUT: 24" x 36"
 DRAWN BY: KT
 CHECKED BY: JL
 APPROVED BY: JL
 DATE: 8/16/2011
 REVISIONS:

COUNTY ROAD 11A
CANAL ROAD
RIGHT-OF-WAY

Prepared For:
 Johnson County Road and
 Bridge Department
 310 Railroad Avenue
 Buffalo, WY 82834

Bighorn
Surveying &
Engineering, LLC
 401 Fort Street Suite 4 Buffalo, WY 82834 (307) 684-7400 www.bighornsurveying.com