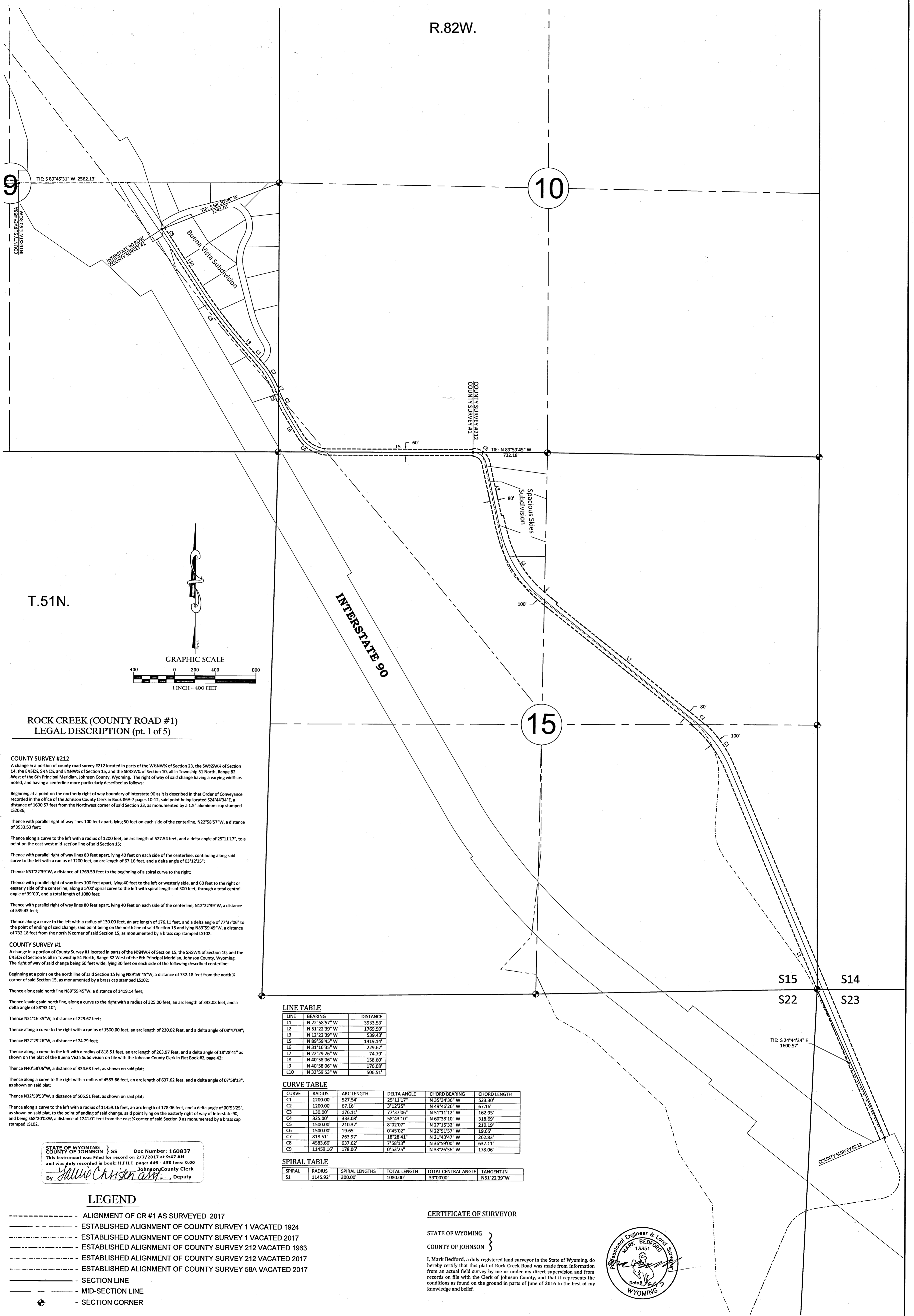


R.82W.

10

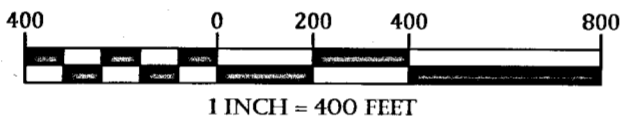
15

S15 S14
S22 S23



T.51N.

GRAPHIC SCALE



**ROCK CREEK (COUNTY ROAD #1)
LEGAL DESCRIPTION (pt. 1 of 5)**

COUNTY SURVEY #212

A change in a portion of County road survey #212 located in parts of the W1/4NW1/4 of Section 23, the SW1/4SW1/4 of Section 14, the E1/2SE1/4, SW1/4NE1/4, and E1/4NW1/4 of Section 15, all in Township 51 North, Range 82 West of the 6th Principal Meridian, Johnson County, Wyoming. The right of way of said change having a varying width as noted, and having a centerline more particularly described as follows:

Beginning at a point on the northerly right of way boundary of Interstate 90 as it is described in that Order of Conveyance recorded in the office of the Johnson County Clerk in Book 86A-7 pages 10-12, said point being located S24°44'34"E, a distance of 1600.57 feet from the Northwest corner of said Section 23, as monumented by a 1.5" aluminum cap stamped LS006;

Thence with parallel right of way lines 100 feet apart, lying 50 feet on each side of the centerline, N22°58'57"W, a distance of 3933.53 feet;

Thence along a curve to the left with a radius of 1200 feet, an arc length of 527.54 feet, and a delta angle of 25°11'17", to a point on the east-west mid-section line of said Section 15;

Thence with parallel right of way lines 80 feet apart, lying 40 feet on each side of the centerline, continuing along said curve to the left with a radius of 1200 feet, an arc length of 67.16 feet, and a delta angle of 03°12'25";

Thence N51°22'39"W, a distance of 1769.59 feet to the beginning of a spiral curve to the right;

Thence with parallel right of way lines 100 feet apart, lying 40 feet to the left or westerly side, and 60 feet to the right or easterly side of the centerline, along a 500' spiral curve to the left with spiral lengths of 300 feet, through a total central angle of 39°00', and a total length of 1080 feet;

Thence with parallel right of way lines 80 feet apart, lying 40 feet on each side of the centerline, N12°22'39"W, a distance of 539.43 feet;

Thence along a curve to the left with a radius of 130.00 feet, an arc length of 176.11 feet, and a delta angle of 77°37'06" to the point of ending of said change, said point being on the north line of said Section 15 and lying N89°59'45"W, a distance of 732.18 feet from the north X corner of said Section 15, as monumented by a brass cap stamped LS102.

COUNTY SURVEY #1

A change in a portion of County Survey #1 located in parts of the N1/4NW1/4 of Section 15, the S1/4SW1/4 of Section 10, and the E1/2E1/4 of Section 9, all in Township 51 North, Range 82 West of the 6th Principal Meridian, Johnson County, Wyoming. The right of way of said change being 60 feet wide, lying 30 feet on each side of the following described centerline:

Beginning at a point on the north line of said Section 15 lying N89°59'45"W, a distance of 732.18 feet from the north X corner of said Section 15, as monumented by a brass cap stamped LS102;

Thence along said north line N89°59'45"W, a distance of 1419.14 feet;

Thence leaving said north line, along a curve to the right with a radius of 325.00 feet, an arc length of 333.08 feet, and a delta angle of 58°43'10";

Thence N31°16'35"W, a distance of 229.67 feet;

Thence along a curve to the right with a radius of 1500.00 feet, an arc length of 230.02 feet, and a delta angle of 08°47'09";

Thence N22°29'26"W, a distance of 74.79 feet;

Thence along a curve to the left with a radius of 818.51 feet, an arc length of 263.97 feet, and a delta angle of 18°28'41" as shown on the plat of the Buena Vista Subdivision on file with the Johnson County Clerk in Plat Book #2, page 42;

Thence N40°58'06"W, a distance of 334.68 feet, as shown on said plat;

Thence along a curve to the right with a radius of 4583.66 feet, an arc length of 637.62 feet, and a delta angle of 07°58'13", as shown on said plat;

Thence N32°59'53"W, a distance of 506.51 feet, as shown on said plat;

Thence along a curve to the left with a radius of 11459.16 feet, an arc length of 178.06 feet, and a delta angle of 00°53'25", as shown on said plat, to the point of ending of said change, said point lying on the easterly right of way of Interstate 90, and being 568'20"08W, a distance of 1241.01 feet from the east X corner of said Section 9 as monumented by a brass cap stamped LS102.

LINE TABLE

LINE	BEARING	DISTANCE
L1	N 22°58'57" W	3933.53'
L2	N 51°22'39" W	1769.59'
L3	N 12°22'39" W	539.43'
L4	N 89°59'45" W	1419.14'
L5	N 31°16'35" W	229.67'
L6	N 22°29'26" W	74.79'
L7	N 40°58'06" W	334.68'
L8	N 40°58'06" W	178.06'
L9	N 40°58'06" W	176.08'
L10	N 32°59'53" W	506.51'

CURVE TABLE

CURVE	RADIUS	ARC LENGTH	DELTA ANGLE	CHORD BEARING	CHORD LENGTH
C1	1200.00'	527.54'	25°11'17"	N 35°34'36" W	523.30'
C2	1200.00'	67.16'	3°12'25"	N 49°46'26" W	67.16'
C3	130.00'	176.11'	77°37'06"	N 51°11'12" W	162.95'
C4	325.00'	333.08'	58°43'10"	N 60°38'10" W	318.69'
C5	1500.00'	230.02'	8°47'09"	N 27°15'32" W	210.19'
C6	1500.00'	19.65'	0°45'02"	N 22°51'57" W	19.65'
C7	818.51'	263.97'	18°28'41"	N 31°43'47" W	262.83'
C8	4583.66'	637.62'	7°58'13"	N 36°59'00" W	637.11'
C9	11459.16'	178.06'	0°53'25"	N 33°26'36" W	178.06'

SPIRAL TABLE

SPIRAL	RADIUS	SPIRAL LENGTHS	TOTAL LENGTH	TOTAL CENTRAL ANGLE	TANGENT-IN
S1	11459.16'	300.00'	1080.00'	39°00'00"	N51°22'39"W

STATE OF WYOMING }
COUNTY OF JOHNSON } SS Doc Number: 160837
This instrument was filed for record on 2/7/2017 at 9:47 AM
and was recorded in book: H.F.I.L.E. page: 446 - 450 feet: 0 00
By *Mark Bedford* Johnson County Clerk
Deputy

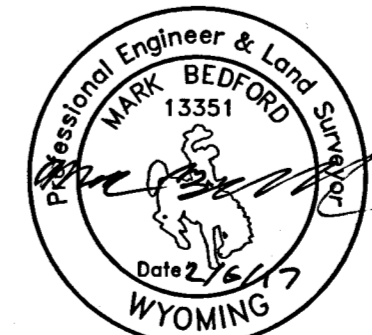
LEGEND

- ALIGNMENT OF CR #1 AS SURVEYED 2017
- ESTABLISHED ALIGNMENT OF COUNTY SURVEY 1 VACATED 1924
- ESTABLISHED ALIGNMENT OF COUNTY SURVEY 1 VACATED 2017
- ESTABLISHED ALIGNMENT OF COUNTY SURVEY 212 VACATED 1963
- ESTABLISHED ALIGNMENT OF COUNTY SURVEY 212 VACATED 2017
- ESTABLISHED ALIGNMENT OF COUNTY SURVEY 58A VACATED 2017
- SECTION LINE
- MID-SECTION LINE
- SECTION CORNER

CERTIFICATE OF SURVEYOR

STATE OF WYOMING }
COUNTY OF JOHNSON }

I, Mark Bedford, a duly registered land surveyor in the State of Wyoming, do hereby certify that this plat of Rock Creek Road was made from information from an actual field survey by me or under my direct supervision and from records on file with the Clerk of Johnson County, and that it represents the conditions as found on the ground in parts of June of 2016 to the best of my knowledge and belief.



**ROCK CREEK COUNTY ROAD #1
BEING PORTIONS OF COUNTY SURVEYS
#1 AND #212
RIGHT-OF-WAY**

PREPARED FOR:
JOHNSON COUNTY ROAD
AND BRIDGE DEPARTMENT
310 RAILROAD AVENUE
BUFFALO, WY 82834

**Bighorn
Surveying &
Engineering, LLC**
401 Fort Street Suite 4 Buffalo, WY 82834 (307) 684-7400 www.bighornsurveying.com

Rock Creek County Road #1
Being portions of County Surveys
#1 & #212 R/W

